

FREEHOLD



House - Terraced (EPC Rating: E)

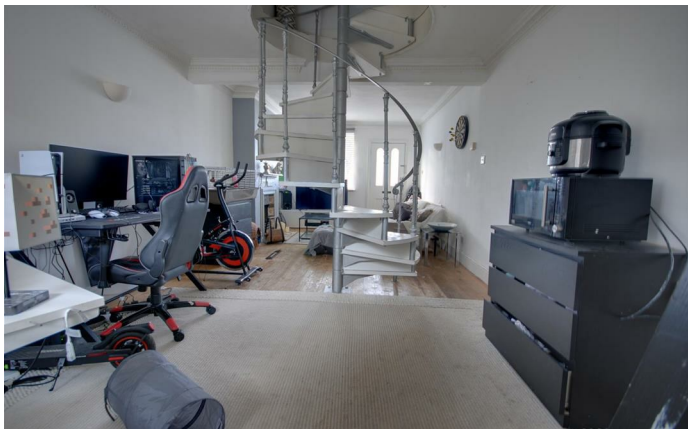
VILLIERS ROAD, WATFORD,  
HERTFORDSHIRE, WD19 4AH

£425,000

## 2 Bedroom House - Terraced located in Hertfordshire

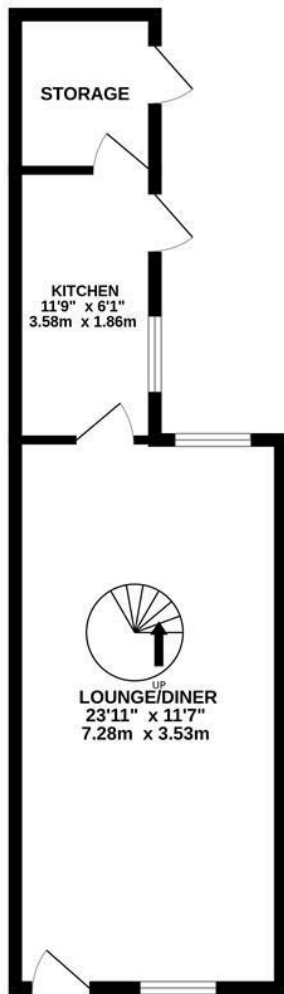
REDUCED AND CHAIN FREE. A pretty mid-terrace cottage nestled within the highly sought after Oxhey Village. In need of some updating and provides great potential. Consisting of two bedrooms with bathroom off-landing, through lounge, kitchen, utility area, and 120' garden. Call today to express your interest.



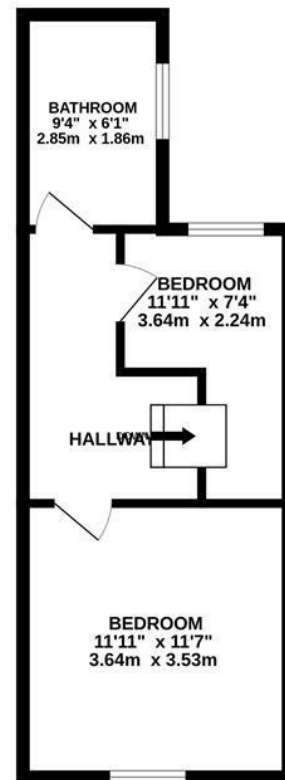


WATFORD LETTINGS | 12 MARKET STREET, WATFORD, HERTFORDSHIRE, WD18 0PD

GROUND FLOOR  
390 sq.ft. (36.2 sq.m.) approx.



1ST FLOOR  
334 sq.ft. (31.0 sq.m.) approx.



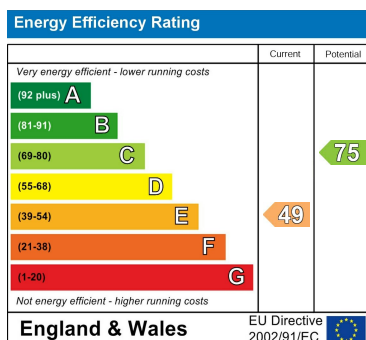
TOTAL FLOOR AREA : 723 sq.ft. (67.2 sq.m.) approx.

Whilst every attempt has been made to ensure the accuracy of the floorplan contained here, measurements of doors, windows, rooms and any other items are approximate and no responsibility is taken for any error, omission or mis-statement. This plan is for illustrative purposes only and should be used as such by any prospective purchaser. The services, systems and appliances shown have not been tested and no guarantee as to their operability or efficiency can be given.  
Made with Metropix ©2025

Council Tax Band

**E**

Energy Performance Graph



Call us on

**01923 220 012**

**enquiries@warrenanthony.co.uk**

**www.warrenanthony.co.uk**

Agents Note: Whilst every care has been taken to prepare these particulars, they are for guidance purposes only. All measurements are approximate and are for general guidance purposes only and whilst every care has been taken to ensure their accuracy, they should not be relied upon and potential buyers are advised to recheck the