



House - Semi-Detached (EPC Rating: D)

**WARWICK WAY, CROXLEY GREEN,
RICKMANSWORTH, WD3 3SB**

PCM

£2,500 PCM

3 Bedroom House - Semi-Detached located in Rickmansworth

A STUNNING THREE BEDROOM SEMI DETACHED HOUSE WITH A DRIVEWAY IN CROXLEY GREEN - EXCELLENT LOCAL SCHOOLS, SHOPS AND TRANSPORT LINKS. AVAILABLE MID JULY 2025.

This beautifully presented three-bedroom semi-detached house offers a perfect blend of style, space and practicality, ideally located close to excellent schools, shops and green open spaces.

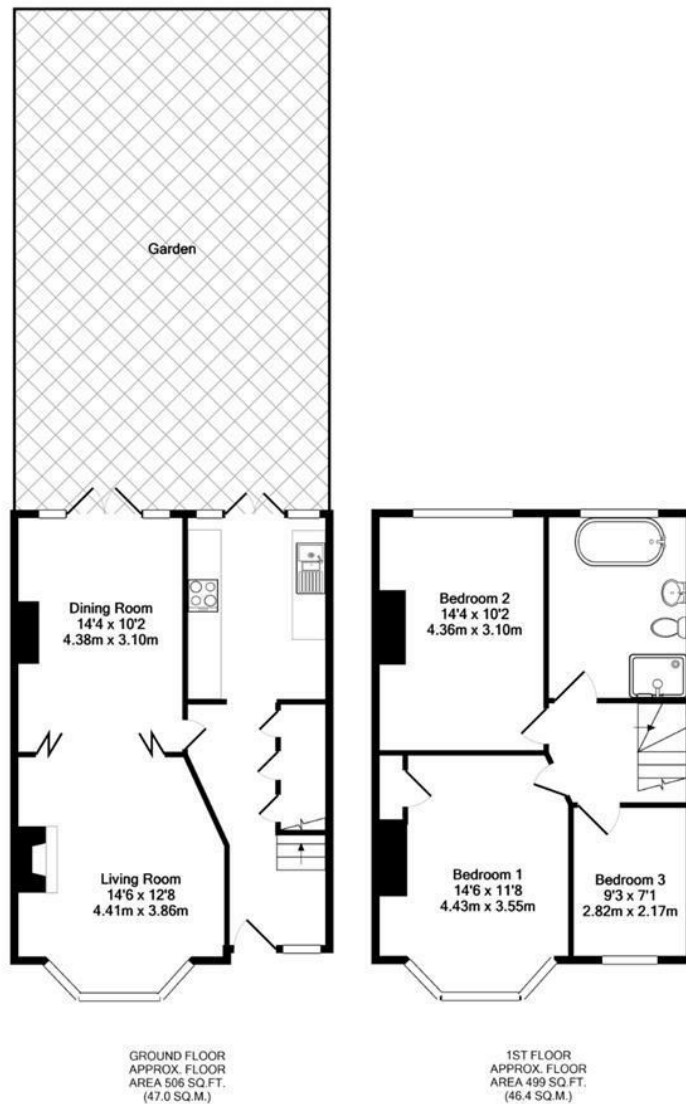
This property has a private driveway with space for one car and convenient gated side access. Inside, a spacious entrance hallway welcomes you with understairs storage and a utility area housing a modern Worcester combi boiler.

The contemporary kitchen boasts high-end integrated appliances and stylish tiled floors, perfect for culinary enthusiasts. Wooden, glass-framed doors connect the bright living room to a separate dining area, creating a flexible, open-plan feel. From here, French doors open out to a rear garden—a true gardener's paradise, ideal for entertaining or relaxing with family.

Upstairs features two generously sized double bedrooms, each with unique feature walls, and a spacious single bedroom that doubles beautifully as a home office or study. The luxurious bathroom is a real showstopper, complete with a round freestanding bathtub, walk-in shower and high-quality finishes throughout.



WATFORD LETTINGS | 12 MARKET STREET, WATFORD, HERTFORDSHIRE, WD18 0PD



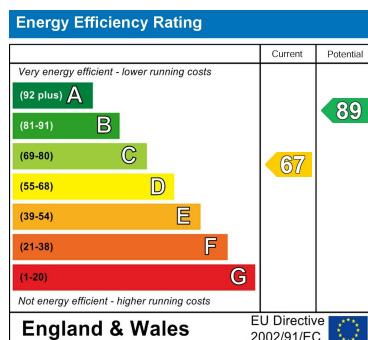
TOTAL APPROX. FLOOR AREA 1005 SQ.FT. (93.3 SQ.M.)

Whilst every attempt has been made to ensure the accuracy of the floor plan contained here, measurements of doors, windows, rooms and any other items are approximate and no responsibility is taken for any error, omission, or mis-statement. The services, systems and appliances shown have not been tested and no guarantee as to their operability or efficiency can be given. Total floor areas will include any garage(s) where applicable.
Made with Metropix ©2022

Council Tax Band

D

Energy Performance Graph



Call us on

01923 220 012

enquiries@warrenanthony.co.uk

www.warrenanthony.co.uk

Agents Note: Whilst every care has been taken to prepare these particulars, they are for guidance purposes only. All measurements are approximate and are for general guidance purposes only and whilst every care has been taken to ensure their accuracy, they should not be relied upon and potential buyers are advised to recheck the