



Apartment (EPC Rating:)

**EASTBURY ROAD, BUSHEY, WATFORD,
WD19 4PN**

Per Month

£1,700 Per



2 Bedroom Apartment located in Watford

A BEAUTIFUL TWO BEDROOM TWO BATHROOM APARTMENT OVERLOOKING BUSHEY STATION - PRIME LOCATION AND COMES WITH ALLOCATED PARKING! AVAILABLE NOW!

This first floor two bedroom apartment is a gem waiting to be occupied. With its prime location, you can get into London within 25 minutes!

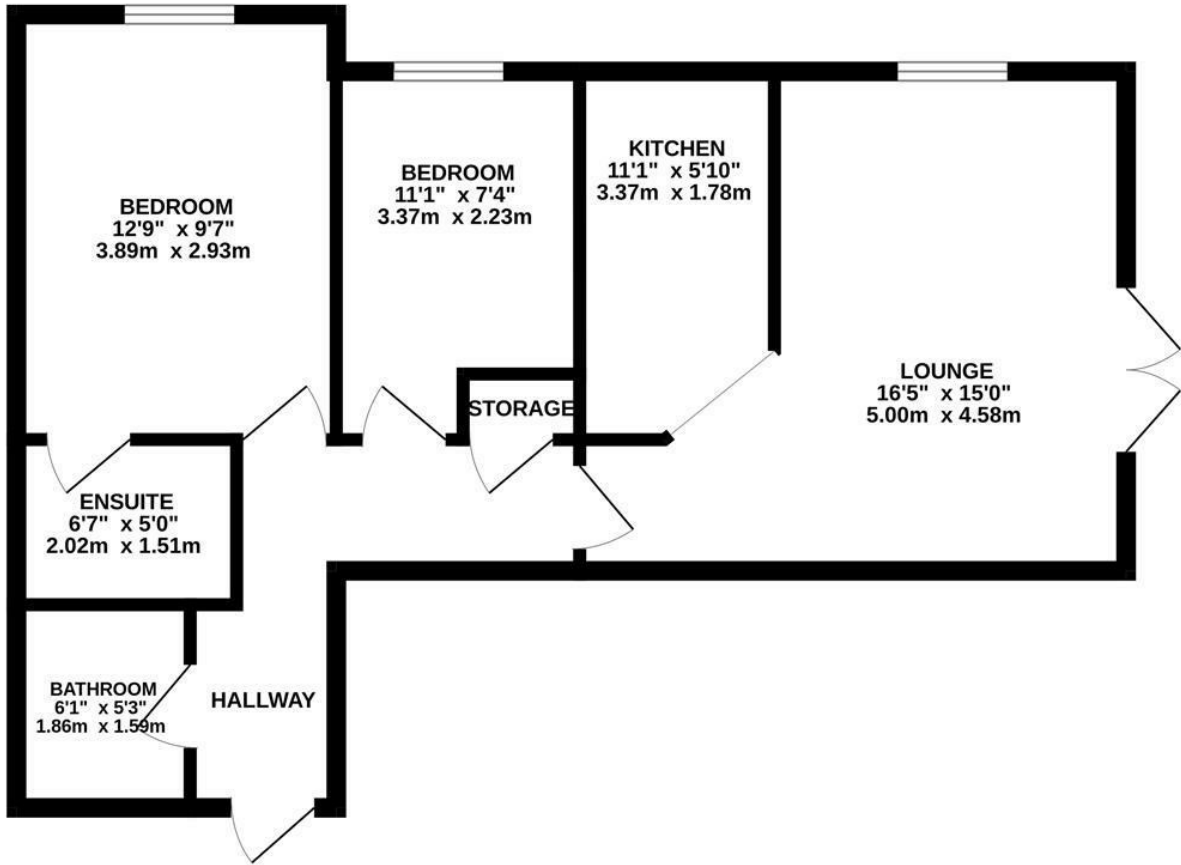
This property is comprised of an entrance hallway, a spacious living room with double doors opening to overlook Bushey station and communal gardens, a modern kitchen with all integrated appliances, one double bedroom with an ensuite, one small double bedroom/study, and a family bathroom.

There is an intercom entry phone system, 1 parking space and gas central heating. Offered unfurnished (except 1 double bed) and available now!



WATFORD SALES | 12 MARKET STREET, WATFORD, HERTFORDSHIRE, WD18 0PD

GROUND FLOOR
585 sq.ft. (54.3 sq.m.) approx.



TOTAL FLOOR AREA : 585 sq.ft. (54.3 sq.m.) approx.
 Whilst every attempt has been made to ensure the accuracy of the floorplan contained here, measurements of doors, windows, rooms and any other items are approximate and no responsibility is taken for any error, omission or mis-statement. This plan is for illustrative purposes only and should be used as such by any prospective purchaser. The services, systems and appliances shown have not been tested and no guarantee as to their operability or efficiency can be given.
 Made with Metropix ©2023

Council Tax Band

Energy Performance Graph

Energy Efficiency Rating		Current	Potential
Very energy efficient - lower running costs			
(92 plus) A			
(81-91) B			
(69-80) C			
(55-68) D			
(39-54) E			
(21-38) F			
(1-20) G			
Not energy efficient - higher running costs			
England & Wales	EU Directive 2002/91/EC		

Call us on

01923 220012

sales@warrenanthony.co.uk

<https://www.warrenanthony.co.uk>

Agents Note: Whilst every care has been taken to prepare these particulars, they are for guidance purposes only. All measurements are approximate and are for general guidance purposes only and whilst every care has been taken to ensure their accuracy, they should not be relied upon and potential buyers are advised to recheck the

