



House - Terraced (EPC Rating: D)

**SOULDERN STREET, WATFORD,  
HERTFORDSHIRE, WD18 0EU**  
PCM

**£1,650 PCM**



# 2 Bedroom House - Terraced located in Hertfordshire

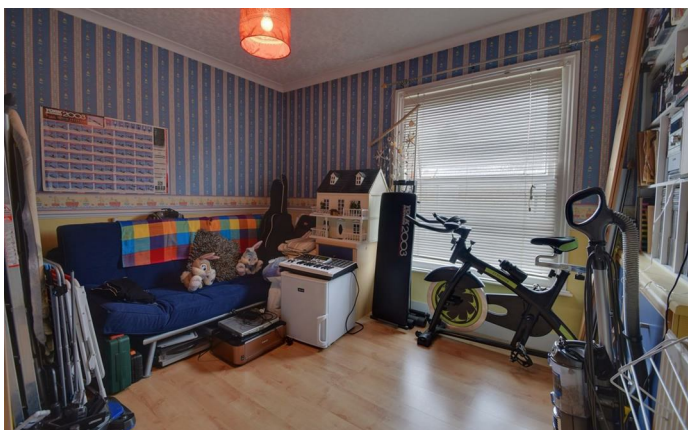
TWO BEDROOM HOUSE JUST 0.3 MILES FROM WATFORD GENERAL HOSPITAL - 0.5 MILES TO WATFORD TOWN CENTRE AND 0.6 MILES TO WATFORD METROPOLITAN STATION.

This house is located minutes away from Watford General and is ideal for NHS professionals, equally for families as it is located in a quiet road set back from the main road.

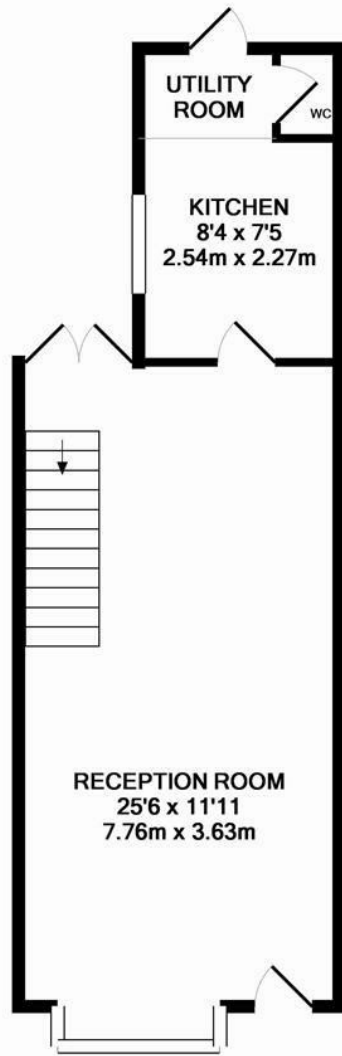
The property is comprised of a living room, dining room, kitchen and utility room downstairs with a separate WC. On the first floor there are two double bedrooms and a bathroom off of the bedroom.

Additionally, there is gas central heating, permit parking and double glazing. Offered unfurnished and available LATE AUGUST 2024

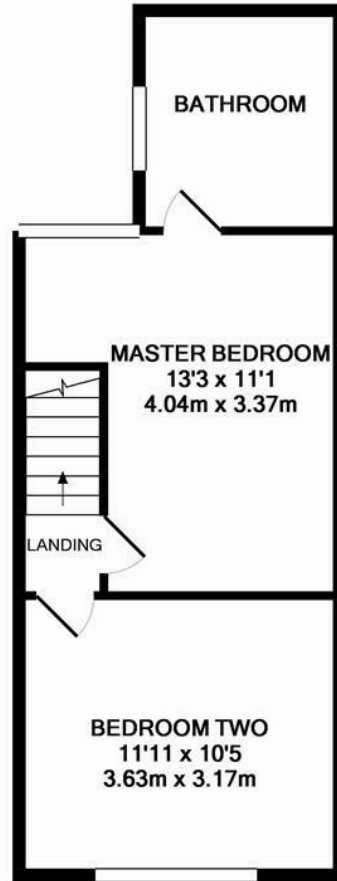




WATFORD LETTINGS | 12 MARKET STREET, WATFORD, HERTFORDSHIRE, WD18 0PD



GROUND FLOOR



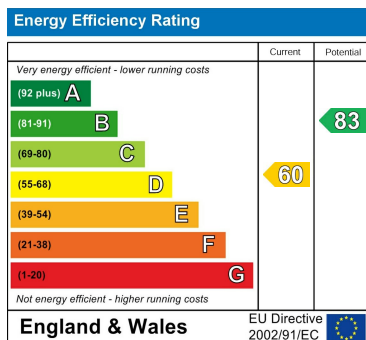
1ST FLOOR

Whilst every attempt has been made to ensure the accuracy of the floor plan contained here, measurements of doors, windows, rooms and any other items are approximate and no responsibility is taken for any error, omission, or mis-statement. This plan is for illustrative purposes only and should be used as such by any prospective purchaser. The services, systems and appliances shown have not been tested and no guarantee as to their operability or efficiency can be given  
Made with Metropix ©2016

Council Tax Band

D

Energy Performance Graph



Call us on

01923 220 012

[enquiries@warrenanthony.co.uk](mailto:enquiries@warrenanthony.co.uk)

[www.warrenanthony.co.uk](http://www.warrenanthony.co.uk)

Agents Note: Whilst every care has been taken to prepare these particulars, they are for guidance purposes only. All measurements are approximate and are for general guidance purposes only and whilst every care has been taken to ensure their accuracy, they should not be relied upon and potential buyers are advised to recheck the