



Apartment (EPC Rating:)

**400 WHIPPENDELL ROAD, WATFORD,
HERTFORDSHIRE, WD18 7PG**

PCM

£1,700 PCM



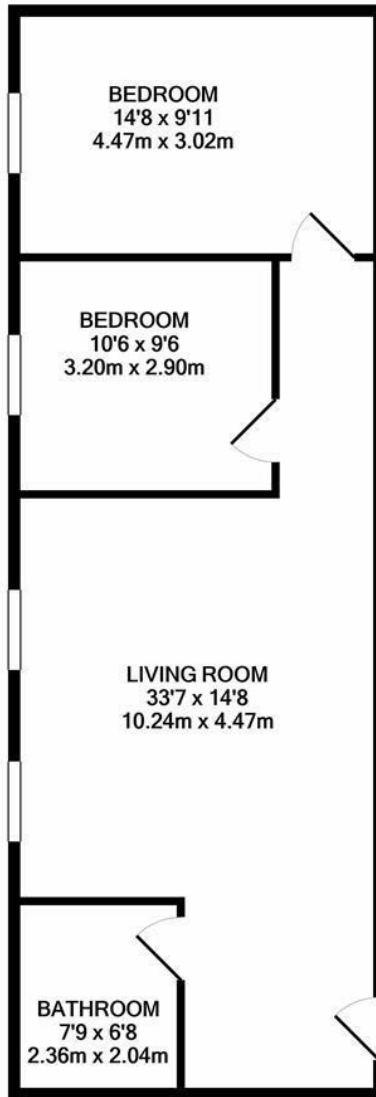
2 Bedroom Apartment located in Hertfordshire

A UNIQUE TWO BEDROOM APARTMENT IN A GRADE II LISTED BUILDING BROUGHT TO YOU BY THE AWARD WINNING HENLEY HOMES - OFFERING HIGH CEILINGS AND LARGE WINDOWS ALLOWING PLENTY OF NATURAL LIGHT - ALLOCATED PARKING FOR ONE CAR

- 0.7 MILES TO WATFORD GENERAL HOSPITAL - 1.2 MILES TO WATFORD HIGH STREET STATION
- WALKING DISTANCE TO WATFORD METROPOLITAN STATION - 0.5 MILES TO CASSIOBURY PARK
- 1 MILE FROM WATFORD STADIUM - 1.2 MILES FROM THE WATFORD ATRIA TOWN CENTRE



WATFORD LETTINGS | 12 MARKET STREET, WATFORD, HERTFORDSHIRE, WD18 0PD



TOTAL APPROX. FLOOR AREA 638 SQ.FT. (59.3 SQ.M.)

Whilst every attempt has been made to ensure the accuracy of the floor plan contained here, measurements of doors, windows, rooms and any other items are approximate and no responsibility is taken for any error, omission, or mis-statement. This plan is for illustrative purposes only and should be used as such by any prospective purchaser. The services, systems and appliances shown have not been tested and no guarantee as to their operability or efficiency can be given
 Made with Metropix ©2021

Council Tax Band

Call us on

01923 220 012

Energy Performance Graph

enquiries@warrenanthony.co.uk

www.warrenanthony.co.uk

Energy Efficiency Rating		Current	Potential
<i>Very energy efficient - lower running costs</i>			
(92 plus) A			
(81-91) B			
(69-80) C			
(55-68) D			
(39-54) E			
(21-38) F			
(1-20) G			
<i>Not energy efficient - higher running costs</i>			
England & Wales	EU Directive 2002/91/EC		

Agents Note: Whilst every care has been taken to prepare these particulars, they are for guidance purposes only. All measurements are approximate and are for general guidance purposes only and whilst every care has been taken to ensure their accuracy, they should not be relied upon and potential buyers are advised to recheck the