

50 St James Street
Brighton
East Sussex
BN2 1QG

Background User
T: 01273 915400
E:



Lavender Street , Brighton, BN2 1LE £1,500 Per Month

Beautifully presented 2 bedroom flat with fantastic views.

Set in the heart of Kemptown close to the RSCH and Amex and within easy reach of the seafront, cafes, bars, restaurants and local shops.

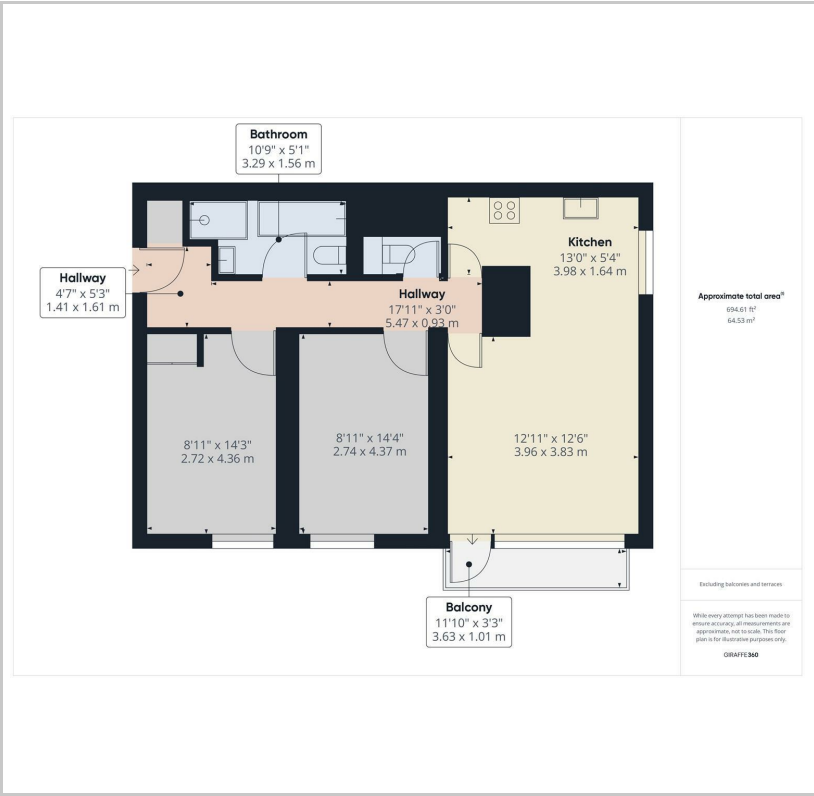
Set on the upper floors of the block with lift access is this spacious, 2 double bedroom, purpose built balcony flat. The lounge is open plan with doors to the balcony with panoramic views over Brighton to the sea. The fitted kitchen has a range of modern wall and base units, oven, hob, fridge, freezer and washing machine. Two double bedrooms with built in cupboards to the master bedroom. Modern well fitted bathroom with white suite, bath, separate walk in shower cubicle w.c and sink. There is also a second w.c. Wooden flooring throughout the property gives a sleek modern look with white decor and modern finishing touches.

Gas central heating and double glazing and beautiful flooring throughout.
Available from 13th December 2025 on an unfurnished basis
EPC Rating: C
Council Tax Band: A
Weekly rent £346



www.tpsb.co.uk

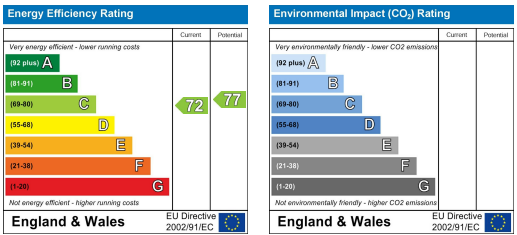
Floor Plan



Area Map



Energy Efficiency Graph



These particulars, whilst believed to be accurate are set out as a general outline only for guidance and do not constitute any part of an offer or contract. Intending purchasers should not rely on them as statements of representation of fact, but must satisfy themselves by inspection or otherwise as to their accuracy. No person in this firm's employment has the authority to make or give any representation or warranty in respect of the property.