

50 St James Street
Brighton
East Sussex
BN2 1QG

T 01273 915400
E olga.wojnarova@tpsb.co.uk



Stroudley Road , Brighton, BN1 4ZB £1,465 Per month

Unfurnished, one bedroom, purpose built flat in the very popular location of New England Quarter. Only minutes away from Brighton train station, close to the city centre and the bustling Lanes with a large variety of independent shops, cafes, restaurants, bars and entertainment and close to the Churchill shopping centre. The sea is only a short walk away making this a great location.

The flat itself is very modern and has an open plan lounge with juliet balcony. Open plan to a modern kitchen with a range of units, integrated washer/dryer, integrated fridge and freezer, oven and hob. The bedroom is double with built in wardrobe. Modern bathroom with attractive tile feature to bath with shower over, basin and w.c. Communal roof terrace in the block.

RENT INCLUDES, WATER RATES, HOT WATER, HEATING AND ELECTRIC.

Available from the 7th June 2024
EPC Rating: B
Council Tax Band: B
Weekly rent £338
Call to view on 01273 915400



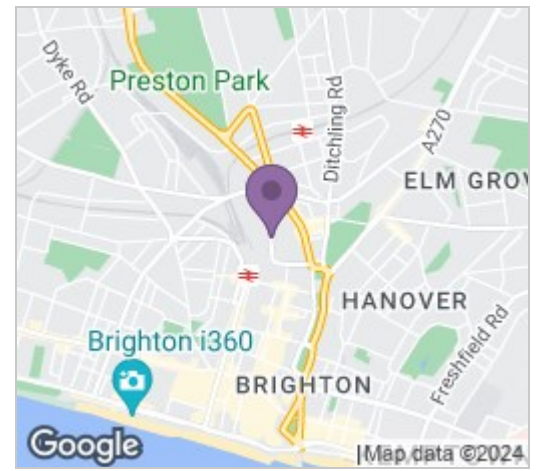
www.tpsb.co.uk

Lounge to Kitchen

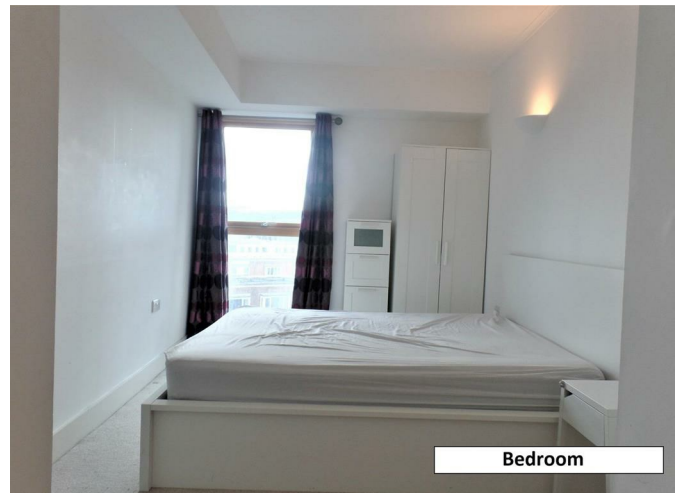
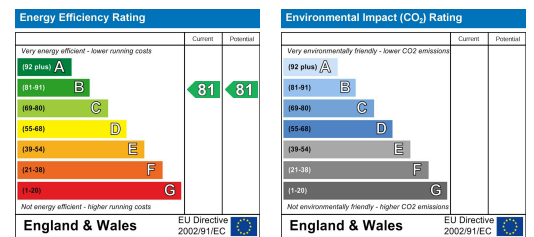
Floor Plan



Area Map



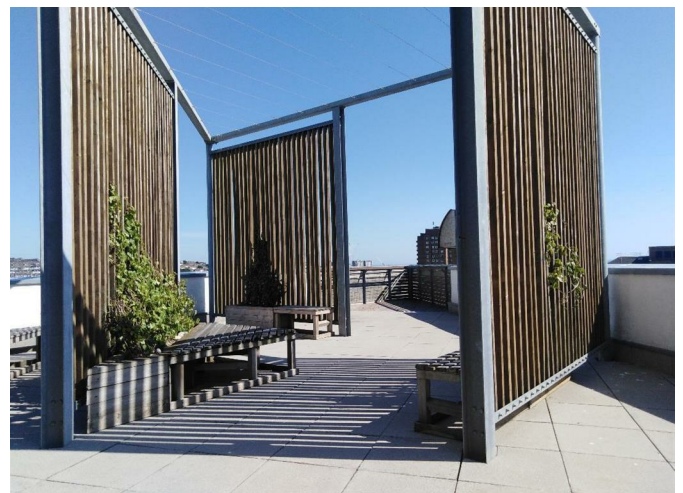
Energy Efficiency Graph



Bedroom



Bathroom



These particulars, whilst believed to be accurate are set out as a general outline only for guidance and do not constitute any part of an offer or contract. Intending purchasers should not rely on them as statements of representation of fact, but must satisfy themselves by inspection or otherwise as to their accuracy. No person in this firm's employment has the authority to make or give any representation or warranty in respect of the property.