

50 St James Street  
Brighton  
East Sussex  
BN2 1QG

T 01273 915400  
E olga.wojnarova@tpsb.co.uk



## Carlyle Street , Brighton, BN2 9XW £1,875 Per month

Situated in very popular area between Elm Grove and Queens park close to local shops, pubs and a short walk away from local schools and public transport.

The three bedroom house offers spacious living with a delightful through lounge/dining room with large bay window, ornate fireplace and doors leading down to the private garden. The kitchen/breakfast room is the rear of the property again with direct access to the garden. There are wall and base units, fridge/freezer, gas hob, electric oven and dishwasher. There is space in the kitchen for a breakfast table and chairs. To the first floor is a large bathroom with freestanding bath, basin with cabinet below, w.c. and large walk in shower cubicle. There are two double bedrooms on the 1st floor as well with the main front bedroom having a range of fitted storage units. To the top floor of the house is the master bedroom with en-suite w.c. and large bi-fold doors that open giving a fantastic uninterrupted view. There is also a fitted wardrobe to this room.

The garden is to the rear of the house and is well cared for and perfect for summer dining with family and friends.

EPC Rating: C  
Council Tax band: C  
Available 28th June 2024 on an unfurnished basis.  
Weekly rent: £432





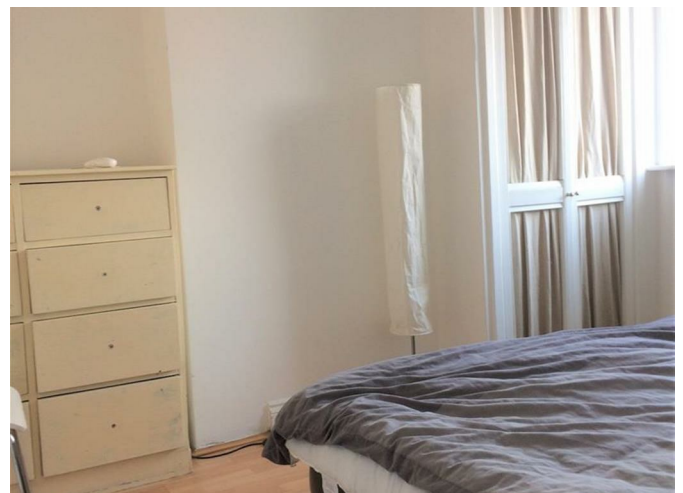
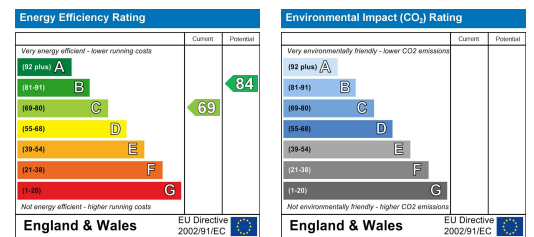
## Floor Plan



## Area Map



## Energy Efficiency Graph



These particulars, whilst believed to be accurate are set out as a general outline only for guidance and do not constitute any part of an offer or contract. Intending purchasers should not rely on them as statements of representation of fact, but must satisfy themselves by inspection or otherwise as to their accuracy. No person in this firm's employment has the authority to make or give any representation or warranty in respect of the property.