

50 St James Street
Brighton
East Sussex
BN2 1QG

T 01273 915400
E olga.wojnarova@tpsb.co.uk



Tamworth Road

, Hove, BN3 5FH

Asking price £550,000

Guide Price: £550,000–£600,000: A Lovely Three Bedroom Victorian Family Terraced House located in the ever-popular Poets Corner.

The property comprises: front garden, entrance hall, double reception room, kitchen, utility room, lean to, cloak room, three bedrooms, bathroom, and rear garden with side return.

The area is very favoured by local families and has become particularly popular with people moving down from London who can commute to the capital from nearby Hove or Aldrington Halt railway stations.

Portland Road is close at hand with its excellent shops, cafes, pubs and has a good local bus service.

The beach is an easy walk, and you are, a short bus ride or cycle along the seafront into Brighton.

There is an outstanding local school (West Hove) and Stoneham Park, Wish Park and the Lagoon are close by. The atmospheric and newly spruced-up George Payne and the Stoneham pubs, both serve great food and drink.

*New local shops on Portland Road like Quaff, Black Radish, Hungry Monkey and an excellent butchers, bakers and fishmongers in Richardson Road make local shopping a pleasure.

*There's a great community feel in Poets Corner. Recent street parties, a makeover for the park and the brilliant resident organised summer festival in Stoneham Park are just some of the benefits of living in the area.

The Property will be taking viewings in two – three weeks' time.

- Victorian Family Home
- Mid Terraced
- Three Bedroom
- Double Reception Room
- Kitchen
- Bathroom
- Popular Poets Corner Location
- Great Local Schools
- Easy walk to Beach
- Viewings begin in 2-3 Weeks.



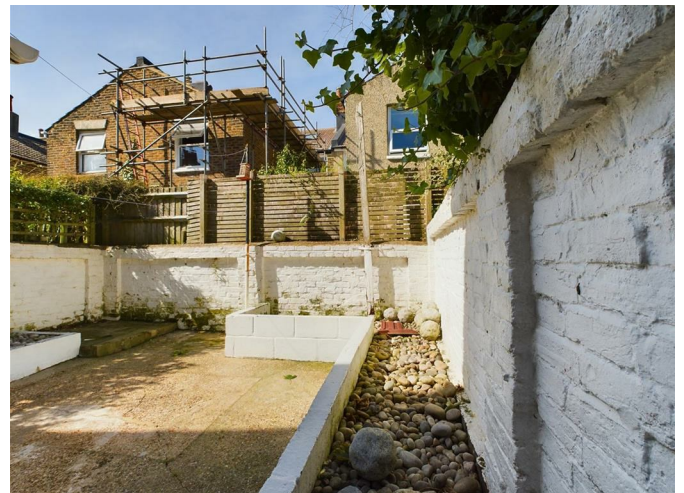
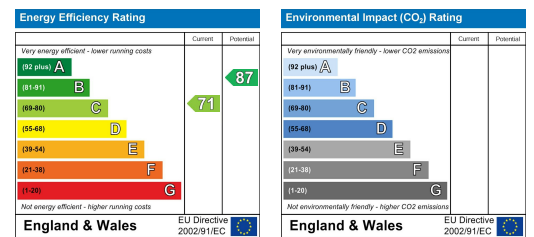
Floor Plan



Area Map



Energy Efficiency Graph



These particulars, whilst believed to be accurate are set out as a general outline only for guidance and do not constitute any part of an offer or contract. Intending purchasers should not rely on them as statements of representation of fact, but must satisfy themselves by inspection or otherwise as to their accuracy. No person in this firm's employment has the authority to make or give any representation or warranty in respect of the property.