

elephant 



£400,000

11 Lynmouth Road, St Werburghs, Bristol, BS2 9YH

2 The Promenade, Bristol, BS7 8AL

Tel: 0117 3700556

Email: info@elephantlovesbristol.co.uk

Web: www.elephantlovesbristol.co.uk

11 Lynmouth Road
St Werburghs, Bristol, BS2 9YH

A well-presented 2-bedroom mid-terrace house located on Lynmouth Road in the sought-after area of St Werburghs.

This property boasts a separate living room with period fireplace and a bay window.

As you move to the rear of the property you'll be greeted by an inviting open-plan kitchen/diner creating a bright and airy space perfect for cooking and dining. The kitchen features a range of wall and base units with plenty of countertop workspace and views out to the private rear garden.

The first floor features a full-width master bedroom, providing ample space and stripped wooden floors. The second bedroom, currently set up as a spare bedroom, offers versatility to suit your needs, whether as a child's room, a home office, or a guest bedroom.

Completing this floor is the family bathroom with a bath with shower over head, W/C and wash basin and tiles surrounding the bath.

Externally you find a private rear garden



which features block paving offering a low-maintenance garden which further benefits from a south-facing aspect.

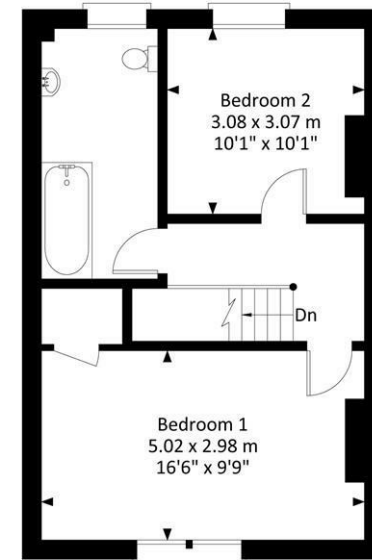
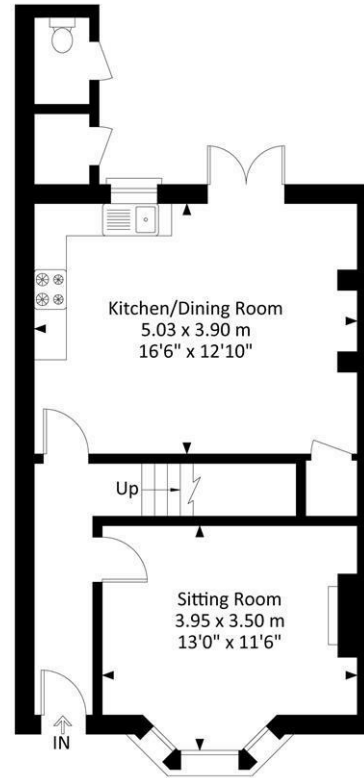
Located in the vibrant area of St Werburghs, this property is surrounded by local amenities, green spaces, and a strong sense of community. Don't miss the opportunity to make this house your home and enjoy the best of Bristol living.





11 Lynmouth Road, St Werburgh's, Bristol, BS2 9YH

Approximate Gross Internal Area = 83.52 sq m / 899.0 sq ft



Ground Floor

First Floor

Illustration for identification purposes only, measurements and approximate, not to scale.



Energy Efficiency Rating		Environmental Impact (CO ₂) Rating	
Very energy efficient - lower running costs	Current	Potential	Very environmentally friendly - lower CO ₂ emissions
(92 plus) A	65	87	(82 plus) A
(81-91) B			(81-91) B
(69-80) C			(69-80) C
(55-68) D			(55-68) D
(39-54) E			(39-54) E
(21-38) F			(21-38) F
(1-20) G			(1-20) G
Not energy efficient - higher running costs		Not environmentally friendly - higher CO ₂ emissions	
England & Wales		England & Wales	
EU Directive 2002/91/EC		EU Directive 2002/91/EC	

Disclaimer: You may download, store and use the material for your own personal use and research. You may not republish, retransmit, redistribute or otherwise make the material available to any party or make the same available on any website, online service or bulletin board of your own or of any other party or make the same available in hard copy or in any other media without the website owner's express prior written consent. The website owner's copyright must remain on all reproductions of material taken from this website.