

The logo for 'elephant' is displayed in a white, lowercase, sans-serif font. To the right of the text is a blue icon consisting of a stylized, continuous line forming a shape reminiscent of an elephant's head and trunk.

£650,000

75 Berkeley Road, Bishopston, Bristol, BS7 8HQ

2 The Promenade, Bristol, BS7 8AL

Tel: 0117 3700556

Email: info@elephantlovesbristol.co.uk

Web: www.elephantlovesbristol.co.uk

75 Berkeley Road Bishopston, Bristol, BS7 8HQ

This charming four-bedroom Victorian family home is on one of Bishopston's premier roads. The property is sold with no onward chain and has four bedrooms, an open-plan kitchen/diner, and a courtyard garden to the rear.

The property is a short walk to Gloucester Road's cafes and amenities and is well within Redland Green Secondary School and Bishop Road Primary School APR. Several green spaces are nearby, including St Andrews Park and Cotham Gardens, and Redland Station, which links to Templemeads and Clifton.

When entering the property, the entrance hall doors lead to the sitting room, kitchen/diner, and generous storage cupboards under the stairs.

The sitting room features double-glazed sash windows to the front, an open fire, engineered wood flooring throughout and a door leading to the kitchen/diner to the rear. The kitchen/dining room at the rear of the property extends the entire width, creating an excellent social space ideal for dinner parties or gathering the family around. The kitchen has wooden base units and contrasting modern wall units, space for a range-style cooker and appliances and a door and windows to the



rear garden.

A staircase leads to the first floor, where there are two double bedrooms, a bathroom, and a shower room. The spacious principal bedroom has double-glazed sash windows to the front and a walk-in wardrobe extends the width of the room; the second bedroom has a window overlooking the rear. The adjacent bathroom has a useful cupboard outside on the landing and is fitted with a white suite comprising a panelled bath, wash hand basin and w.c. The spacious shower room completes the first floor and is equipped with a shower cubicle, wash hand basin, and w.c. There is potential to convert this into an ensuite for the principle bedroom.

On the second floor are two similarly sized double bedrooms and an ample landing space, which is currently used as a home gym but could also be used as a study/office area or converted into an additional bathroom.

Externally, at the rear, the large courtyard offers a low-maintenance space. In a 'woodland style,' a patio steps up to an area laid to bark chippings and a secondary seating area. The garden is enclosed by evergreen mature plants, trees, and shrubs, offering a screen of greenery from the neighbouring properties all year round.

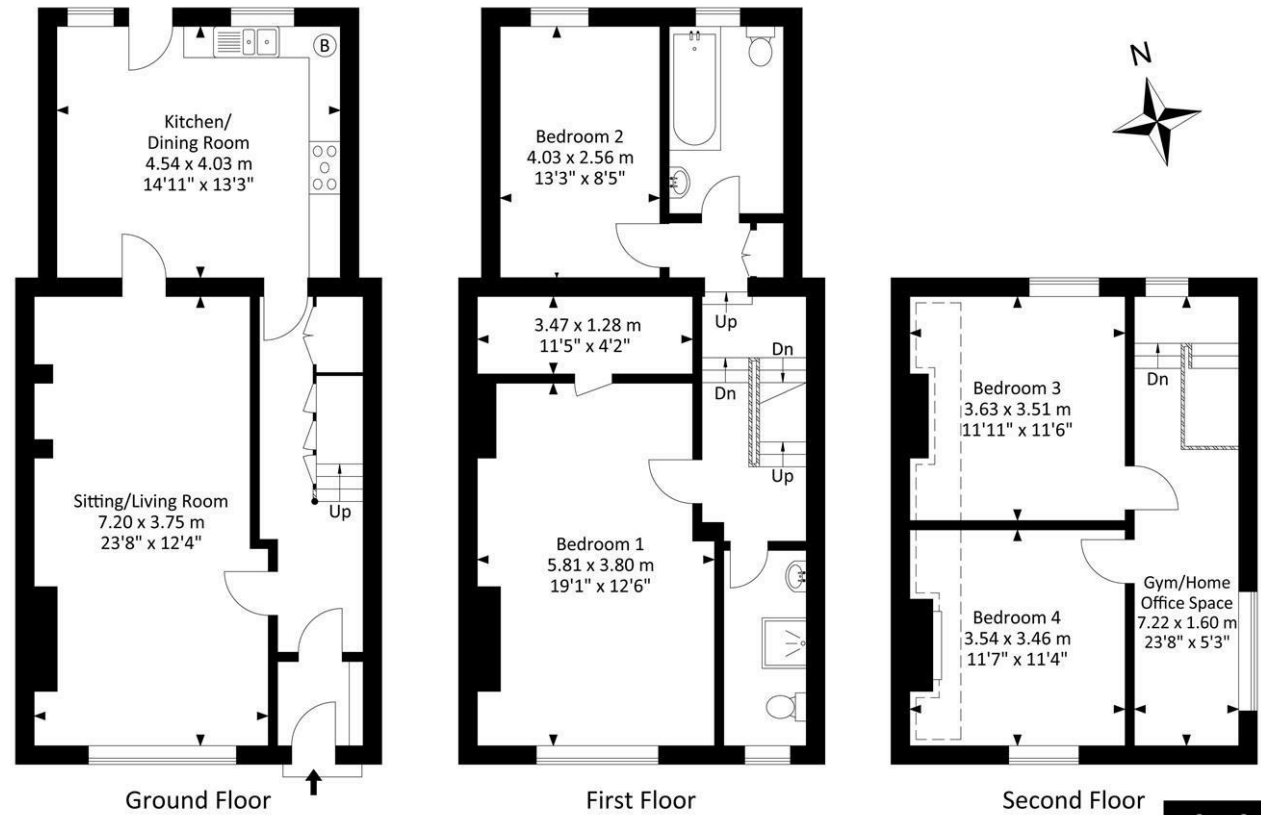
The front of the property is laid to lawn with a tiled pathway to the entrance door.





Berkeley Road, Bishopston, Bristol, BS7 8HQ

Approx. Gross Internal Area 1648.49 Sq.Ft - 153.15 Sq.M



For illustrative purposes only. Not to scale.

Whilst every attempt has been made to ensure accuracy of the floor plan all measurements are approximate and no responsibility is taken for any error, omission or measurement.

Energy Efficiency Rating		Environmental Impact (CO ₂) Rating			
Very energy efficient - lower running costs	Current	Potential	Very environmentally friendly - lower CO ₂ emissions	Current	Potential
(92 plus) A			(92 plus) A		
(81-91) B			(81-91) B		
(69-80) C			(69-80) C		
(55-68) D			(55-68) D		
(39-54) E			(39-54) E		
(21-38) F			(21-38) F		
(1-20) G			(1-20) G		
Not energy efficient - higher running costs			Not environmentally friendly - higher CO ₂ emissions		
England & Wales		EU Directive 2002/91/EC	England & Wales		EU Directive 2002/91/EC