



£450,000

80 Keys Avenue, Horfield, Bristol, BS7 0HJ

2 The Promenade, Bristol, BS7 8AL

Tel: 0117 3700556

Email: info@elephantlovesbristol.co.uk

Web: www.elephantlovesbristol.co.uk

80 Keys Avenue Horfield, Bristol, BS7 0HJ

A spacious and well presented 1930's mid-terrace family home with off-street parking situated in a sought after location within the heart of Horfield. The light and bright accommodation has plenty to offer including three double bedrooms, two separate receptions, a smartly finished kitchen, a mature south-east facing rear garden, cellar and a separate garage with secure rear-access. The property further benefits from being offered with no onward chain.

Ground floor accommodation comprises main entrance and hallway with oak flooring throughout. Currently configured as a dining room, the front reception features double glazed box bay window and oak floor. A second reception room currently used as a sitting room features a wood-burning stove and a large storage cupboard, whilst an opening leads through into a stylish and contemporary kitchen/breakfast room fitted with seamless white gloss base units, solid oak worktops and high level oak shelving. Stainless steel fittings and high spec integrated appliances complete the look and a large double glazed window provides a commanding view over the rear garden.

Accommodation on the first floor comprises three double bedrooms and a family bathroom. At the front of the property is a



large full width master bedroom benefiting from two large windows allowing for plenty of natural light. Bedrooms two and three are both well-proportioned doubles and benefit from rooftop views across Horfield. Finally, a family bathroom is neatly arranged and features a large walk in shower with chrome fittings and further benefits from being tiled floor to ceiling.

Externally, the front of the property bares the classic 1930's facade and benefits from an off-street parking space for one car and storage for bicycles/bins. At the rear of the property, a staircase leads down to a large south-east garden with slate tiled patio with laid lawn and raised planted beds beyond. The property also features a single garage with secure rear access. A doorway leads under the house to a useful cellar with huge potential to convert and extend the property subject to the relevant planning consent.

80 Keys Avenue is a very well presented home that showcases the true potential of this style of property. The and the house feels light, airy and spacious with plenty of further scope to extend. There is a real sense of community on the road with a mixture of new younger families and older generations that have lived in the area for a long time. The convenient location provides easy access to the open green space of Horfield Common, leisure centre with swimming pool and a range of shops and cafes on Gloucester Road.





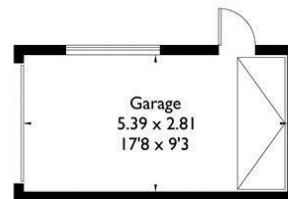
80 Keys Avenue, Bristol, BS7 0HJ

Approximate Gross Internal Area = 102.9 sq m / 1108 sq ft

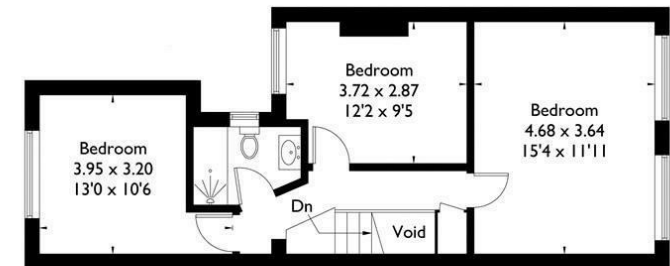
Basement = 53.0 sq m / 570 sq ft

Garage = 15.1 sq m / 162 sq ft

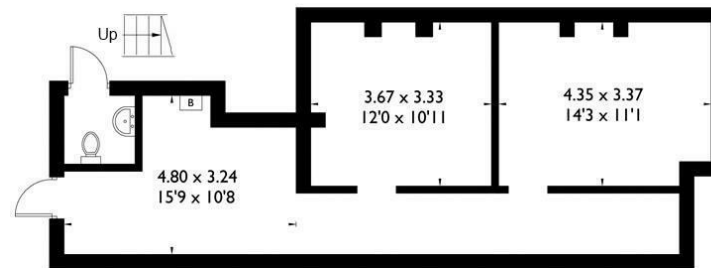
Total = 171.0 sq m / 1841 sq ft (Excluding Void)



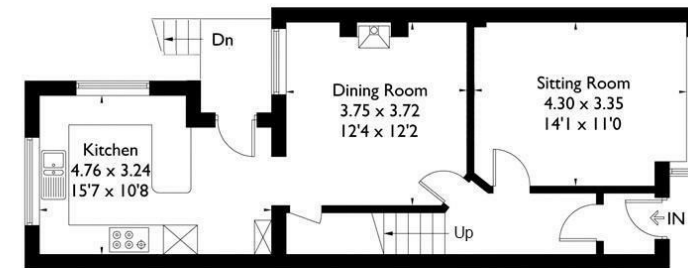
(Not Shown In Actual Location / Orientation)



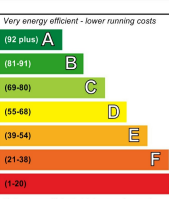
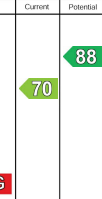
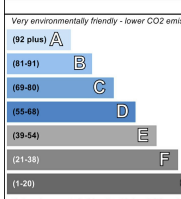
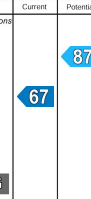
First Floor



Basement



Ground Floor

Energy Efficiency Rating		Environmental Impact (CO ₂) Rating	
Current	Potential	Current	Potential
 Very energy efficient - lower running costs (92 plus) A (81-91) B (69-80) C (55-68) D (39-54) E (21-38) F (1-20) G Not energy efficient - higher running costs	 88 70	 Very environmentally friendly - lower CO ₂ emissions (82 plus) A (61-81) B (49-60) C (35-48) D (23-34) E (11-20) F (1-10) G Not environmentally friendly - higher CO ₂ emissions	 87 67
England & Wales	EU Directive 2002/91/EC	England & Wales	EU Directive 2002/91/EC

FLOORPLANZ © 2017 0203 9056099 Ref: 196309

This plan is for layout guidance only. Drawn in accordance with RICS guidelines. Not drawn to scale unless stated. Windows & door openings are approximate. Whilst every care is taken in the preparation of this plan, please check all dimensions, shapes & compass bearings before making any decisions reliant upon them.

Disclaimer: You may download, store and use the material for your own personal use and research. You may not republish, retransmit, redistribute or otherwise make the material available to any party or make the same available on any website, online service or bulletin board of your own or of any other party or make the same available in hard copy or in any other media without the website owner's express prior written consent. The website owner's copyright must remain on all reproductions of material taken from this website.