



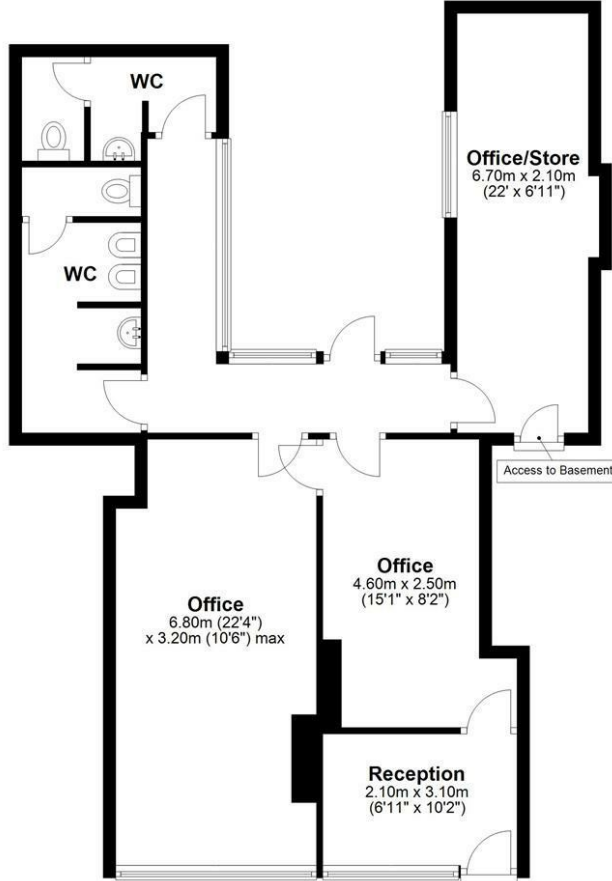
The Anchor, 5a Commercial Road, Lowestoft, Suffolk, NR32 2TD

Spacious, well-located and adaptable town centre office unit on Commercial Road, Lowestoft.

- Well-located ground floor office unit in Lowestoft town centre.
- 848sq ft of floorspace.
- Multiple offices and meeting rooms, as well as separate reception area.
- Rear courtyard for bike storage and access via rear alleyway.
- Situated a stone's throw from the train station, high street, bus station and Lowestoft South Beach
- £600pcm or £7200pa rent payable.
- Potential for a range of uses.
- Call to arrange a viewing now.

£600

Ground Floor
Approx. 78.9 sq. metres (848.8 sq. feet)



Total area: approx. 78.9 sq. metres (848.8 sq. feet)

Disclaimer: Please note this floor plan is for marketing purposes and is to be used as a guide only. All efforts have been made to ensure its accuracy at time of print. Plan produced using PlanUp.

Energy Efficiency Rating		
	Current	Potential
<i>Very energy efficient - lower running costs</i>		
(92 plus) A		
(81-91) B		
(69-80) C		
(55-68) D		
(39-54) E		
(21-38) F		
(1-20) G		
<i>Not energy efficient - higher running costs</i>		
England & Wales	EU Directive 2002/91/EC	