



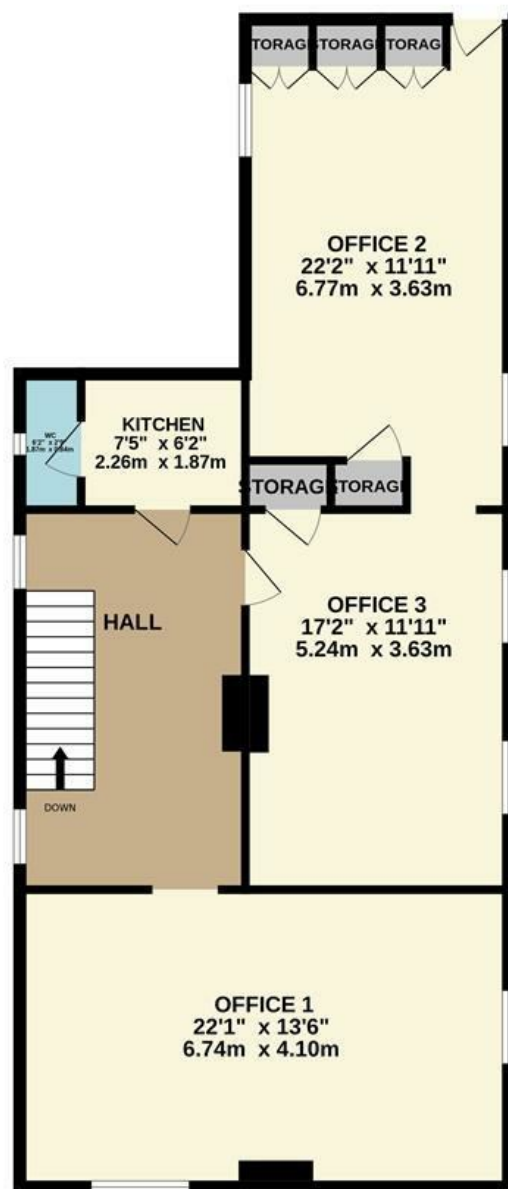
St Ann's House, Suite 14 St. Anns Street, King's Lynn, PE30 1LT

Stunning Suite available to rent within the highly coveted grade II listed St Ann' House, With three main office areas and private entrance, Located in desirable Kings Lynn.

- Stunning office suite to rent in Kings Lynn
- Set within the highly coveted St. Ann's House
- Grade II Listed
- 3 main office areas
- Private entrance
- Parking available to rent
- Fantastic access links
- Suitable space for multiple different businesses
- Gorgeous period features throughout
- Communal Gardens

£833 Per Calendar Month

GROUND FLOOR
995 sq.ft. (92.5 sq.m.) approx.



TOTAL FLOOR AREA : 995 sq.ft. (92.5 sq.m.) approx.

Whilst every attempt has been made to ensure the accuracy of the floorplan contained here, measurements of doors, windows, rooms and any other items are approximate and no responsibility is taken for any error, omission or mis-statement. This plan is for illustrative purposes only and should be used as such by any prospective purchaser. The services, systems and appliances shown have not been tested and no guarantee as to their operability or efficiency can be given.
Made with Metropix ©2023

Energy Efficiency Rating		
	Current	Potential
<i>Very energy efficient - lower running costs</i>		
(92 plus) A		
(81-91) B		
(69-80) C		
(55-68) D		
(39-54) E		
(21-38) F		
(1-20) G		
<i>Not energy efficient - higher running costs</i>		
England & Wales	EU Directive 2002/91/EC	