

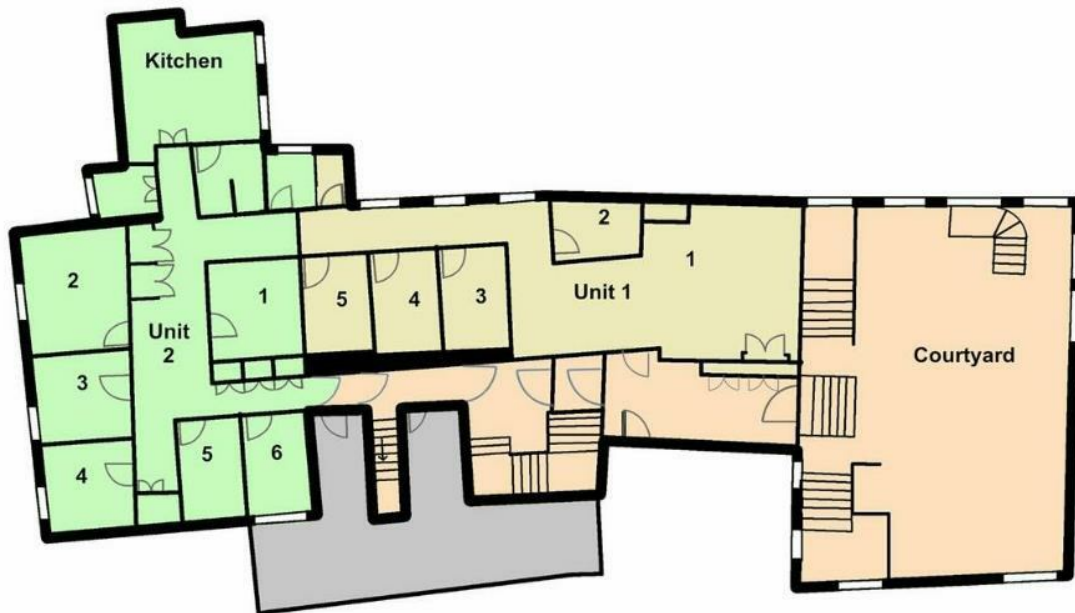


## Unit 2, Woburn Court, 8 Guildhall Hill, Norwich, Norfolk, NR2 1JG

Spacious commercial unit with a wide range of potential uses, situated within a stunning Grade II listed property in heart of Norwich City Centre.

- Prime Commercial unit
- Located within historic Woburn Court
- Fantastic footfall
- Approximately 900 sq.ft. of versatile space.
- Situated opposite the renowned Norwich Market
- Six thoughtfully designed rooms
- Period Features throughout
- The Landlord will work alongside any new tenants to make cosmetic adjustments.
- Available now
- £15,000 PA

£15,000



Energy Efficiency Rating		
	Current	Potential
<i>Very energy efficient - lower running costs</i>		
(92 plus) <b>A</b>		
(81-91) <b>B</b>		
(69-80) <b>C</b>		
(55-68) <b>D</b>		
(39-54) <b>E</b>		
(21-38) <b>F</b>		
(1-20) <b>G</b>		
<i>Not energy efficient - higher running costs</i>		
<b>England &amp; Wales</b>	EU Directive 2002/91/EC	