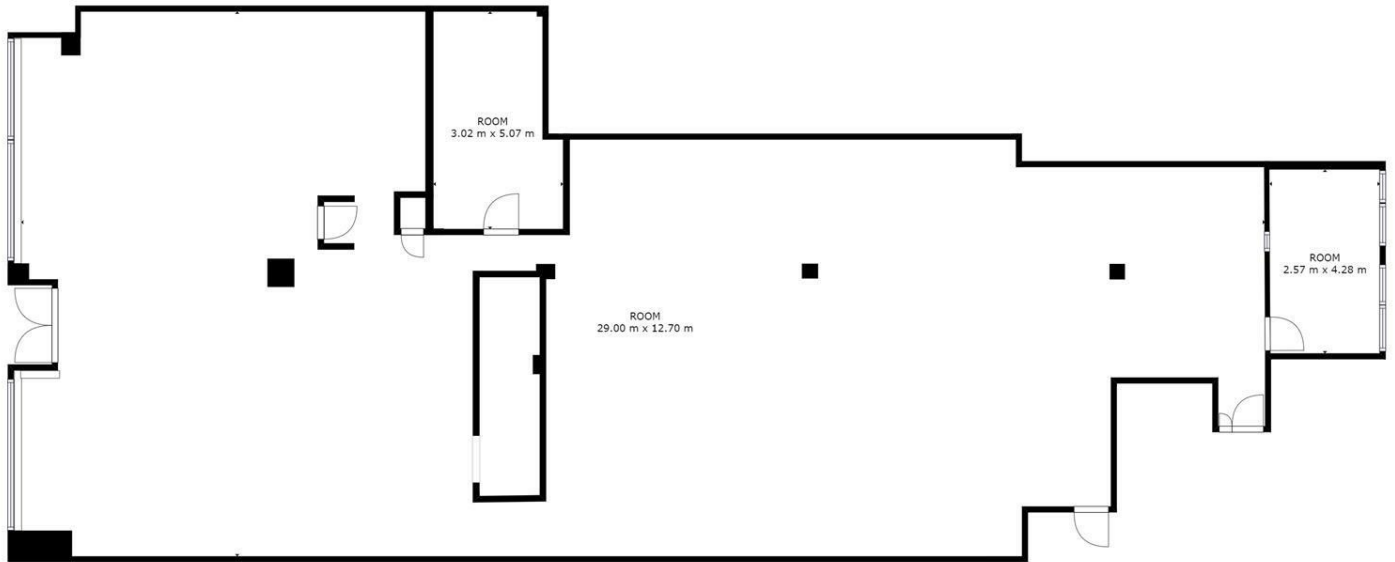


37 London Road North, Lowestoft, Suffolk, NR32 1BH

Spacious ground floor retail unit situated in prime position on London Road North.

£2,000



FLOOR 1

GROSS INTERNAL AREA
FLOOR 1: 307 m²
TOTAL: 307 m²
SIZES AND DIMENSIONS ARE APPROXIMATE, ACTUAL MAY VARY.



Energy Efficiency Rating		Current	Potential
<i>Very energy efficient - lower running costs</i>			
(92 plus) A			
(81-91) B			
(69-80) C			
(55-68) D			
(39-54) E			
(21-38) F			
(1-20) G			
<i>Not energy efficient - higher running costs</i>			
England & Wales	EU Directive 2002/91/EC		