



10 THE ESPLANADE

Robin Hood's Bay, Whitby
YO22 4RS

CROFT

LUXURY | LIFESTYLE | LOCATION

Independence House, Office 2,
Millfield Lane, York, YO26 6PH
toby@croftresidential.co.uk
01904 238222
croftresidential.co.uk

A HEAVENLY COASTAL RETREAT OR HOLIDAY
COTTAGE SET IN AN UNRIVALLED POSITION
WITH SEA VIEWS ACROSS ROBIN HOOD'S BAY

Whitby 5.5 miles | Scarborough 16 miles | Sandsend 16 miles | York 40 miles

ACCOMMODATION

Ground Floor

Kitchen / Dining Room, Living Room, Utility Room

First Floor

Sitting Room, Double Bedroom

Second Floor

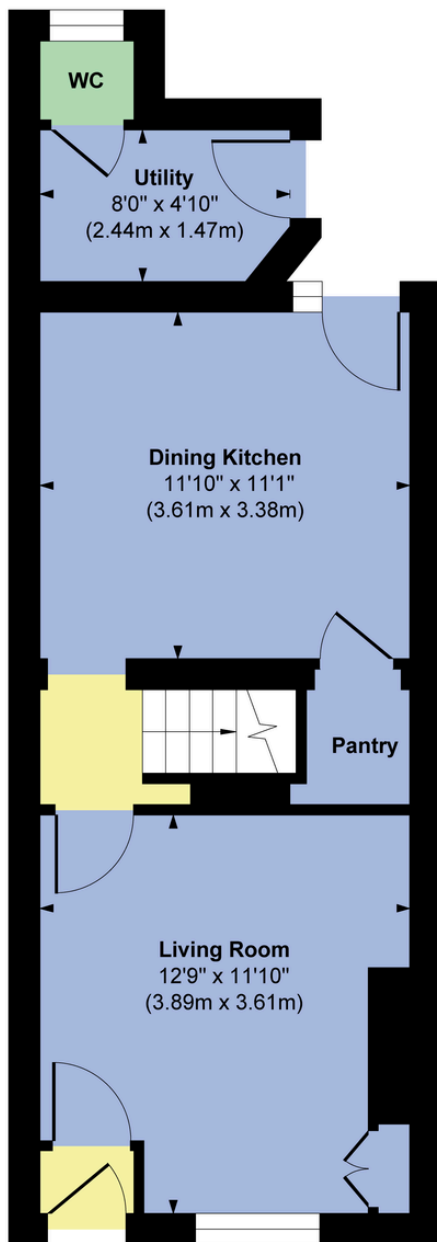
Two Double Bedrooms

Outside

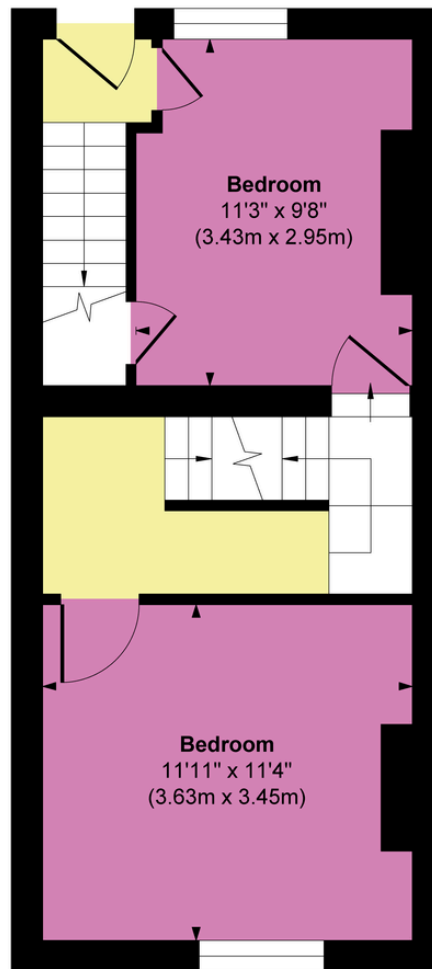
Garden, Terraced Dining / Entertaining Area



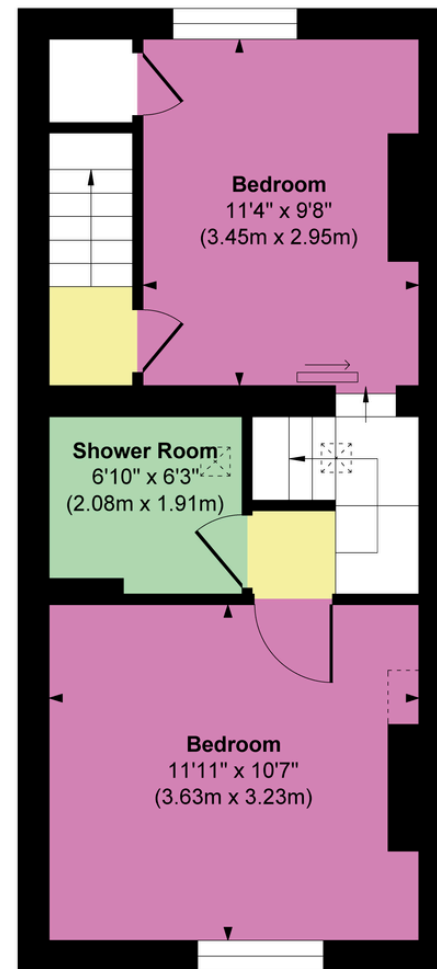




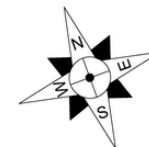
Ground Floor
 Approximate Floor Area
 393 sq. ft
 (36.51 sq. m)



First Floor
 Approximate Floor Area
 341 sq. ft
 (31.67 sq. m)



Second Floor
 Approximate Floor Area
 341 sq. ft
 (31.67 sq. m)



Approx. Gross Internal Floor Area 1075 sq. ft / 99.85 sq. m

Illustration for identification purposes only, measurements are approximate, not to scale.

Copyright © Show Home.



The kind of spot you'll find once and never want to leave.
Discreetly positioned in the village, 10 The Esplanade is truly a little bit of heaven on the coast.



Set across three floors, you are welcomed by the sitting room and an abundance of natural light through the large sash window.

Through to the kitchen is modern cabinetry and integrated appliances, with a walk-in pantry providing additional storage. A convenient cloakroom with WC and basin is accessed through here, and a door leading to the garden.







On the first floor, you will find a second sitting room that takes full advantage of panoramic views across the bay, and a generous super-king size bedroom featuring a vanity basin and dedicated wardrobe space.

Home to two further bedrooms is the top floor, showcasing beautiful characters and layouts. One is arranged as a spacious twin with warm coastal detailing, while the other captures the most dramatic views across the sea and coastline, making it a truly memorable room.





Outside is the spacious terraced garden, a particularly rare find in Robin Hood's Bay.

Offering outstanding sea views and a generous seating area, this dining area lies in a elevated position, creating a sensationally unique and special property on the Heritage Coast.



Robin Hood's Bay boasts an abundance of cafes, shops, and fine eateries, to the haute cuisine and incredible views of The Victoria Hotel, and Bowling Club and tennis courts. There are amazing bus services to Middlesbrough and Scarborough, and railway services from Whitby and Scarborough with direct links to York and Leeds connecting to the main line for Kings Cross or North.



Viewings strictly through Croft

LUXURY | LIFESTYLE | LOCATION