



Black Brick
Finding perfect properties

60, Charles House, 375 Kensington High Street, W14 8NS

Asking Price £1,275,000 - Leasehold  |  2  |

Key Features

An exceptionally bright and spacious 1 bedroom, 2-bathroom apartment located on the 8th floor (with lift) of the luxury award winning development 375 Kensington High Street. Developed by Berkeley Group, Charles House residents benefit from exceptional newly upgraded facilities including 24-hour concierge, resident-only leisure facilities including a vitality pool, swimming pool, gym, sauna and business suite.

The apartment is finished to a high standard throughout. The master bedroom has its own walk-in wardrobe and en-suite bathroom. There is also an additional bathroom for guests with a separate utility area. The winter garden has far reaching views over the new Kensington Olympia development.

Features include hardwood flooring, marble, stone and crystal tiling, under-floor heating in the bathroom and hallway, comfort cooling/heating in the reception room and bedroom, cabling for an integrated home entertainment system which all combine to create a luxurious modern lifestyle.

The apartment would make an ideal London Pied a Terre, investment property or a smart and stylish home.

- 711 square feet (66.1 square metres)
- 8th floor with lift access
- 1 bedroom, 2 bathrooms
- 24-hour concierge
- Resident-only leisure facilities
- One secure underground parking space

Tenure: 999 years from 01/01/2011

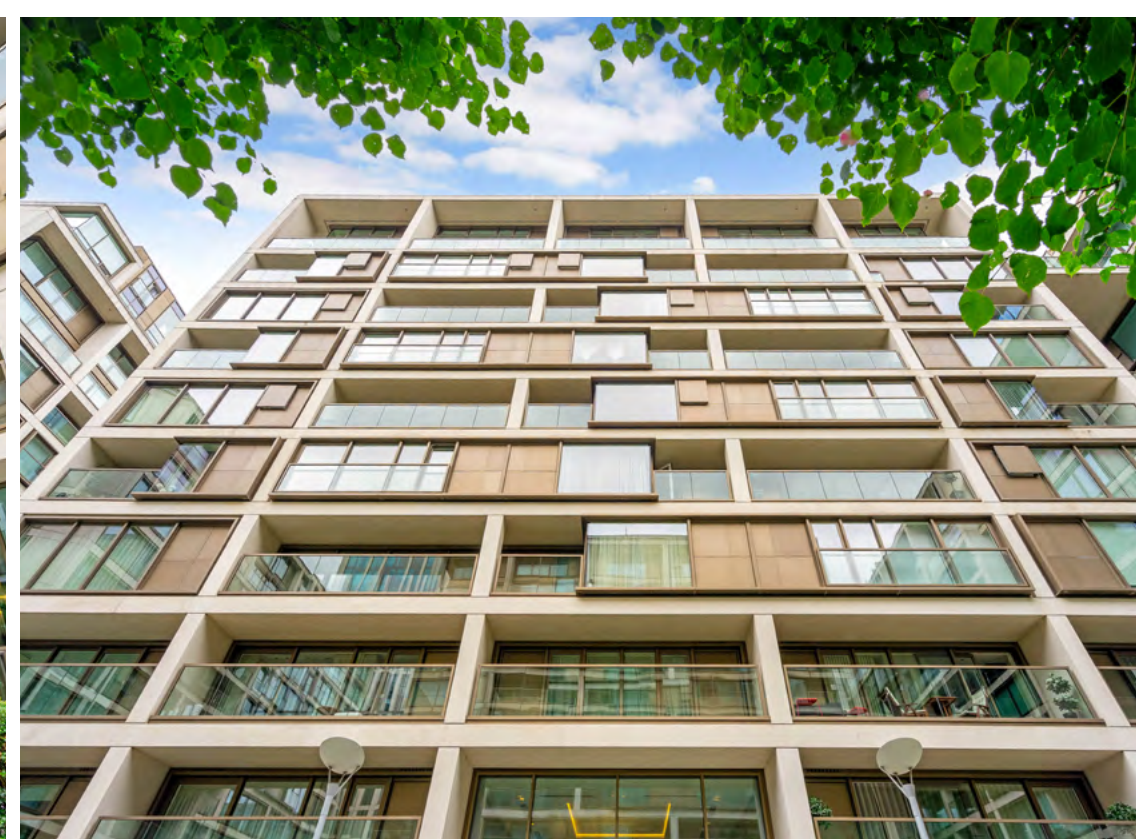
Service charge: £9,908 per annum

Ground rent: £776.02 per annum

Council tax band: G

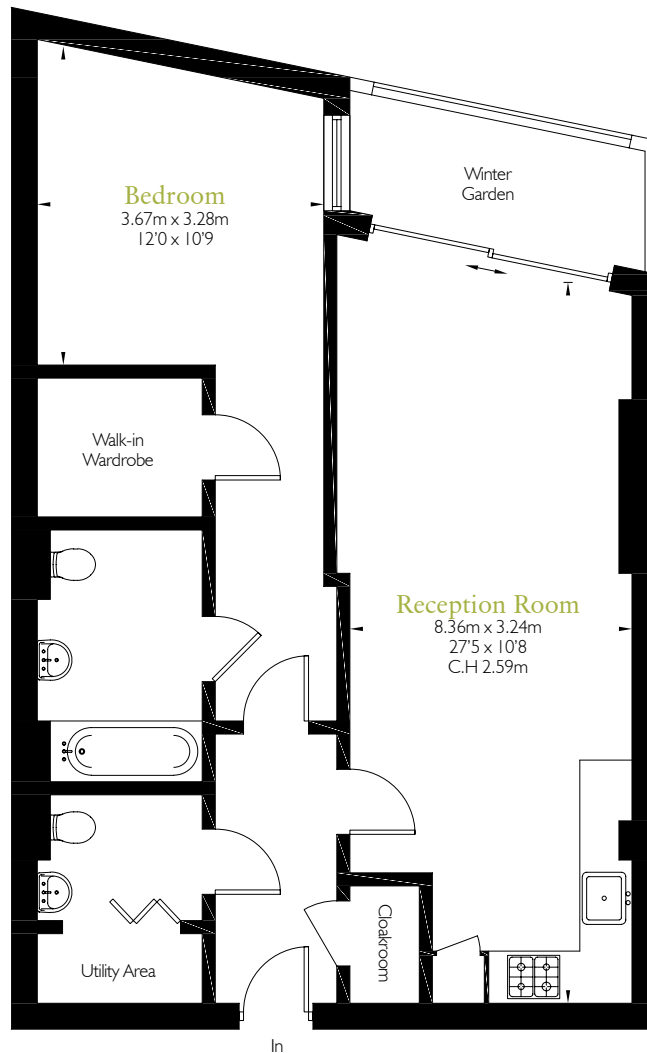






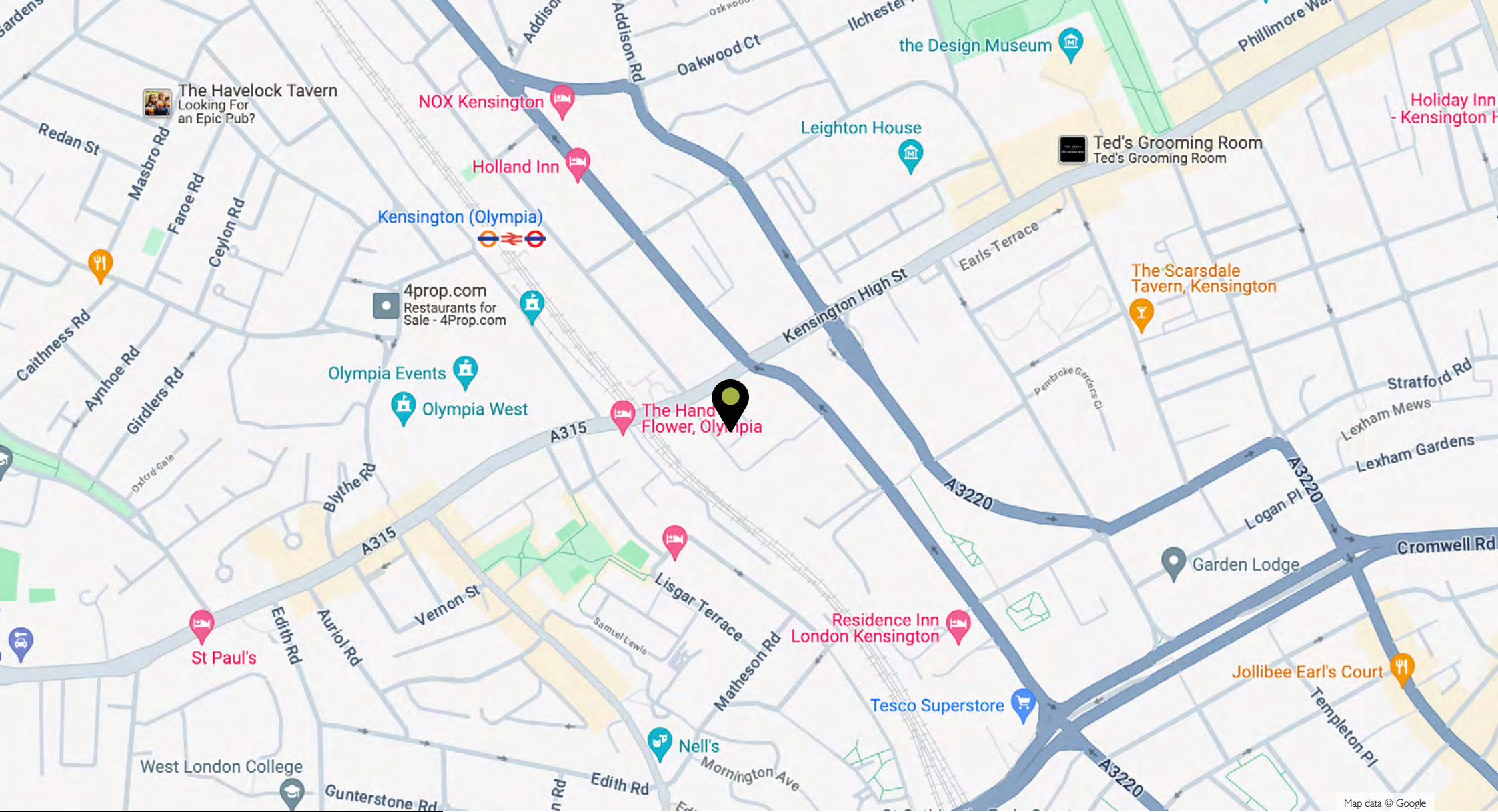
Floor Plan

Approx. gross internal area 711 ft² / 66.1 m²



Eighth Floor

All dimensions are approximate and quoted for guidance only. Reference to appliances and/or services does not imply they are necessarily in working order or fit for purpose. Buyers are advised to obtain verification from their solicitors as to the Freehold/Leasehold status of the property and any fixtures and fittings. These particulars do not constitute or form any part of an offer or contract nor may they be regarded as representations. All interested parties must themselves verify their accuracy.



Access is strictly by appointment only via Black Brick.
To arrange a viewing, please contact:

Camilla Dell: camilla.dell@black-brick.com, 07887827176

Tom Cope: tom.cope@black-brick.com, 07788551144



Black Brick

Finding perfect properties

+44 (0) 20 3141 9861

15 Bruton Place, Mayfair
London W1J 6LU

black-brick.com

info@black-brick.com

Local Area

Charles House is part of the award-winning 375 Kensington High Street development, located at the western end of Kensington High Street. Nearby are local shops, restaurants, and excellent transport links, including Kensington Olympia Mainline Station (District and Overground lines), Earl's Court station (Piccadilly line), and High Street Kensington station (Circle & District line). The property offers easy access to the A4 and Heathrow Airport. The area is undergoing a significant £1.3 billion transformation of Olympia, set to open in 2025. This development will feature new exhibition and conference facilities, a live music hall, a performing arts theatre, Citizen M and Hyatt Regency Hotels, 550,000 square feet of offices, over 30 new restaurants, bars, and eateries, and the new Wetherby Pembridge Independent Senior School.

 Kensington Olympia, Earl's Court and High Street Kensington

 Kensington Olympia

Local Authority:
Royal Borough of Kensington and Chelsea