



A 3 bedroom apartment offering prestigious living within the grounds of a Grade II listed building set amid 6 acres of parkland located in the Central Bath Conservation area.

19 Hope Place, Lansdown Road, Bath, BA1 5DL



HOPE HOUSE

LANSDOWN · BATH



KITCHEN/LIVING/DINING ROOM

19 Hope Place has been designed and specified to distinguished levels of architectural excellence – with over 530 sq ft of opulent, open plan kitchen, dining and lounge space, this first floor, dual aspect home provides a unique signature in style.

The elegant master bedroom has an exquisite ‘his & hers’ en-suite with walk in shower, bedroom 2 and 3 also offer well proportioned space.

Amongst the apartments many features are a south facing Juliet balcony, walk-in utility larder and private underground parking for two vehicles with direct lift access to the first floor.



- Engineered timber flooring to kitchen, dining and living area
- Soft tone carpet to bedrooms
- Polished marble wall and floor tiling to master en-suite
- Bespoke kitchen with quartz worktops and appliances by Miele and Neff
- Built in wine cooler
- Fully fitted wardrobes to master bedroom
- Underfloor heating throughout
- Access to residents private tennis court and communal gardens



Bedroom 1

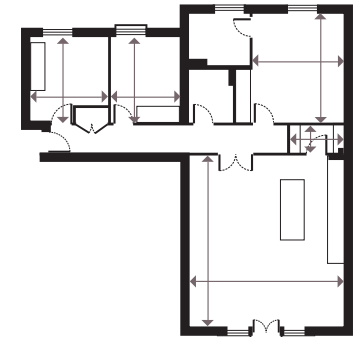


Bedroom 2

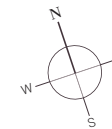




APARTMENT OUTLOOK



Kitchen/Dining/ Living	7.40m x 6.70m	24'3" x 22'0"
Utility	2.30m x 1.20m	7'7" x 3'11"
Bedroom 1	4.70m x 3.90m	15'5" x 12'10"
Bedroom 2	3.70m x 2.90m	12'2" x 9'6"
Bedroom 3	3.60m x 3.30m	11'10" x 10'10"



APARTMENT
LOCATOR
FIRST FLOOR





Hope House is nestled amid extensive, rich and mature woodland grounds with immaculate landscaping and private tennis courts.

Located in the prime residential suburb of Lansdown, Hope House has the boutique shopping area of Bartlett Street Quarter on its doorstep as well as being within walking distance of the heart of the city.

In addition, the development enjoys superb road, rail and air connectivity, being 90 minutes journey time from London Paddington by rail.

CLICK BELOW FOR
AERIAL TOUR



Aerial view of Hope House



HOPE HOUSE

LANSDOWN · BATH

These particulars are compiled with care to give a fair description but we cannot guarantee their accuracy and they do not constitute an offer or contract. The developer reserves the right to alter any specifications without prior notice. Exterior images of Hope House are actual photography, interiors are of the actual apartment with selected images showing computer generated furniture. All development CGIs and artwork contained in this brochure are subject to copyright of the developer and cannot be reproduced in any way without prior written consent. Floor plan is intended to be correct, precise details may vary, furniture shown for illustrative purposes only. Maximum dimensions are given for each room.

