



Matthew Pierce
www.matthewpierce.co.uk

5 & 6 High Street,
Claygate,
Surrey,
KT10 0JG

01372 463100
claygate@matthewpierce.co.uk

16 GIBSON COURT, MANOR ROAD NORTH, HINCHLEY WOOD KT10 0AW

A two-bedroom ground floor retirement apartment set in this popular development just 350 yards from Hinchley Wood village shops and station. Gibson Court forms part of this exclusive private development where independent living is backed up by a resident House Manager and a Warden Call Service. Communal facilities include a residents lounge, guest suite, parking and laundry. The flat is very well presented and has direct access to a patio area and communal gardens.

NO ONWARD CHAIN.

Service Charge £2044 Half yearly. Ground Rent: £287 Half yearly. Lease: 92 Years remaining



GUIDE PRICE £365,000 LEASEHOLD EPC: Band B Council Tax: Band E

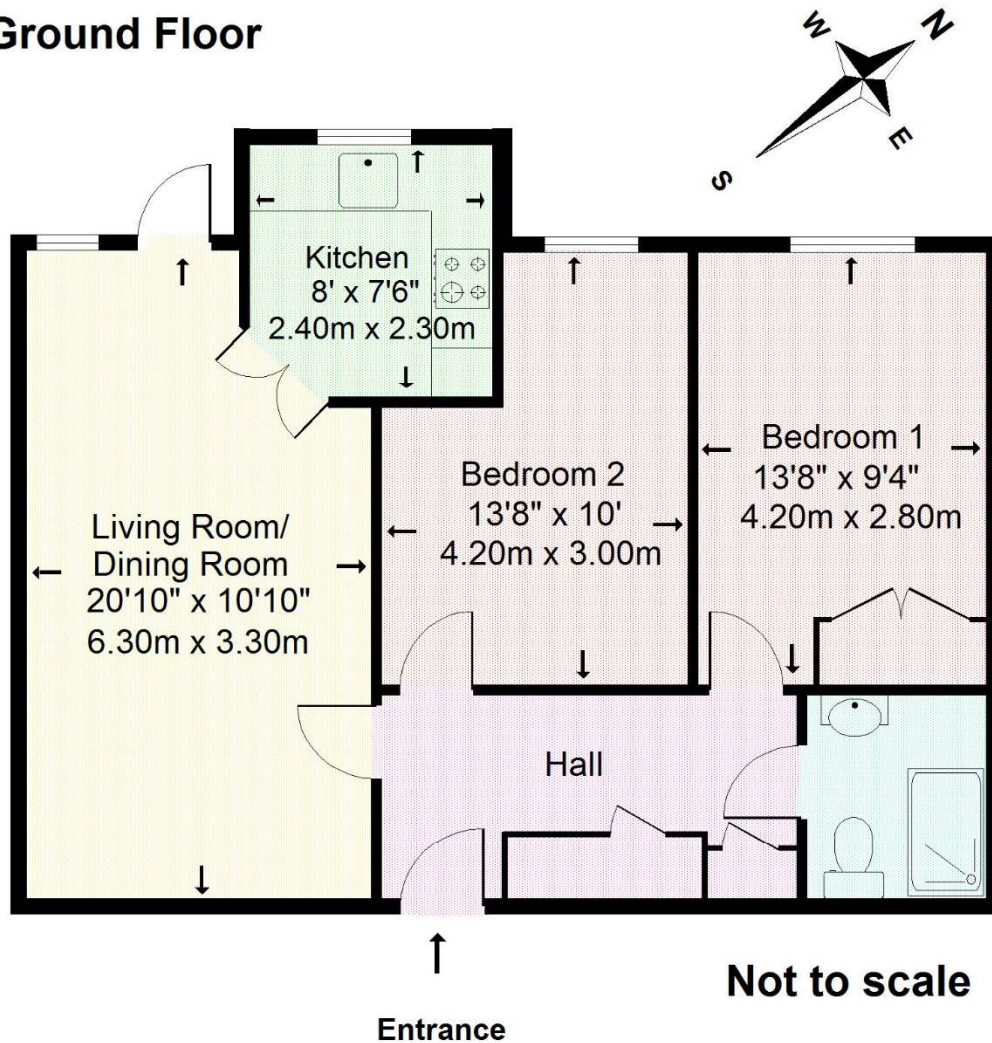
Matthew Pierce give notice that these particulars whilst believed to be accurate, are set out as a general guidance only. Intending purchasers or tenants should not rely on them as statements or representations of fact, but must satisfy themselves by inspection or otherwise as to their accuracy. As such, it does not constitute or form part of a contract. No person in the employment of Matthew Pierce has the authority to make or give representation or warranty in relation to the property.



16 Gibson Court, Manor Road North, Hinchley Wood, Surrey. KT10 0AW

Approximate Gross Internal Floor Area: 61m sq (654sq ft)

Ground Floor



This plan is for illustrative purposes only and is not drawn to scale unless stated. Whilst every care has been taken to ensure the accuracy of this plan, dimensions and compass bearings should be checked before making any decisions reliant upon them. Dimensions shown are to the nearest 3" and are to where indicated by arrow heads. Appliances and utilities eg. baths, cookers etc are visuals only, style and shape may differ.

© Drawing Rooms 2024 - Reproduced for Matthew Pierce

**THIS PLAN HAS BEEN COMMISSIONED BY MATTHEW PIERCE AND
MUST NOT BE REPRODUCED WITHOUT PRIOR PERMISSION**

