

01756 795621
www.david-hill.co.uk

DAVID HILL



End 'ole 9 Denholme House Farm Drive Denholme BD13 4AB

An excellent four/five bedroom middle house providing well planned, beautifully appointed and deceptively spacious family accommodation over three floors with generous gardens to both front and rear and a double garage with private parking in front.

Located within the exclusive Denholme House Farm development with a super southerly aspect and views over open countryside yet convenient for access to the larger local centres.

Guide Price £445,000

End 'ole 9 Denholme House Farm Drive Denholme BD13 4AB

• Denholme 1 mile • Haworth 4.5 miles • Bingley 7 miles • Skipton 15.5 miles • Leeds 19.5 miles • Halifax 6 miles

Location

The property is located within the highly regarded private development of Denholme House Farm situated just 1 mile to the south of Denholme village set nicely back from Halifax road (A629). The village of Denholme provides a Co-op store and a well regarded primary school with the renowned Bronte village of Haworth just 4.5 miles to the north west proving an excellent range of independent shops and services. A more comprehensive range of services can be found in the nearby town of Halifax about 6 miles to the south.

Description

Converted from a former cottage and cleverly extended into part of a sublaterl adjoining stone barn this stunning family house provides four bedroom accommodation of charm and character extending in part over three floors with potential to split bedroom 2 to provide a fifth bedroom or office.

The property is entered into a light porch area being a clever extension to the original cottage flooding the snug beyond with natural light. There is a stove set in stone surround with timber lintel, beams to the ceiling and stairs leading to the first floor. A step leads up to an inner hall with cloakroom having w.c and wash basin. The inner hall gives access to a pleasant lounge with Inglenook style fireplace with flagged hearth and wood burning stove. Glazed double doors open onto a seating area and the front garden. To the rear of the house is a fabulous open plan breakfast kitchen/dining room with a wood burning stove set in a stone fireplace with hearth and double doors opening into a delightful walled garden. The well appointed kitchen has a range of base and wall units with oak block work surfaces and an island unit with granite work surface. There is a range style cooker set in a feature wooden surround with tiled back, plumbing for a dishwasher and washing machine, integrated fridge and separate freezer and an external door to the garden.

The first floor landing with beams and exposed stone features gives way to an inner landing with stairs to the second floor. Off the landing is an attractive bedroom with original cast iron fireplace, mullion windows and views overlooking the garden and fields beyond. The house bathroom is to the rear of the house having restricted headroom to part, with a free standing bath with tap stand, pedestal basin, w.c, and bidè. Built in cupboard concealing the 'Ideal' gas boiler. The inner landing gives way to a second bedroom to the rear of the house with useful under stairs storage. The master bedroom is to the front of the house benefitting from super views and having a comprehensive range of fitted wardrobes and drawers. There is a well appointed en suite shower room with large shower cubicle, pedestal basin and w.c.

The second floor landing gives way to a further bedroom suite comprising a double bedroom with useful under eaves hanging and storage space, a separate en suite shower room with corner shower cubicle, w.c, and pedestal basin and a further room beyond, which although has restricted headroom to part would make a perfect dressing room or could even be separated to provide an office or study area having access from the second floor landing by a separate door.

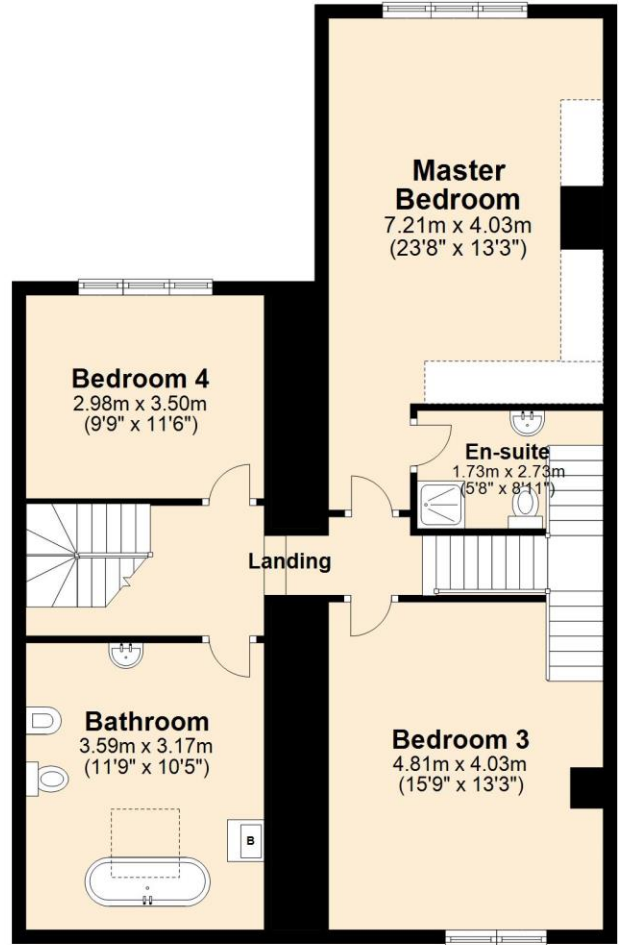
Outside

Across the drive from the house is a double garage (5.59m x 5.64m) with electric roller shutter door, power, light and water with space for private parking in front. The south facing garden is bordered by stone walls and well stocked mature borders, having a central lawn, flagged path and pleasant flagged seating area. The rear garden is predominately flagged and bordered by stone walls and mature planting.



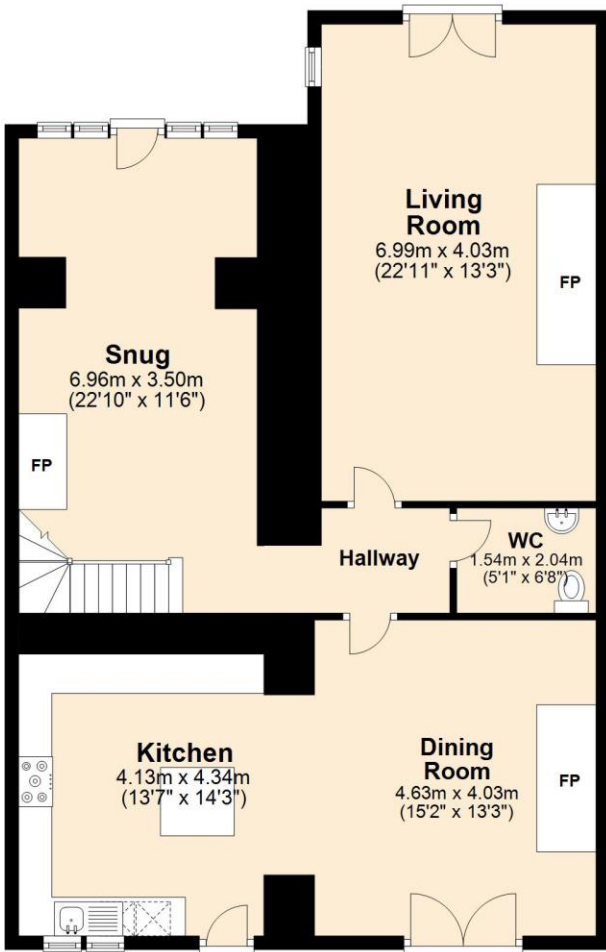
First Floor

Approx. 91.8 sq. metres (988.2 sq. feet)



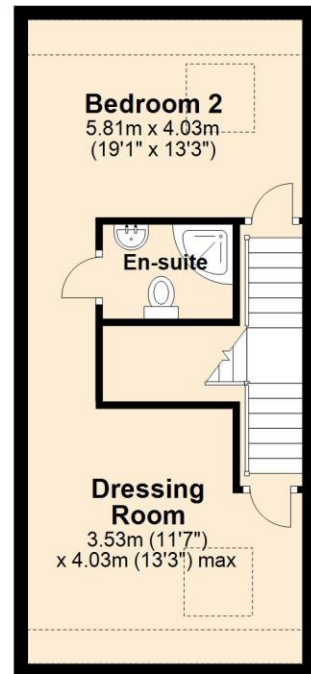
Ground Floor

Approx. 105.9 sq. metres (1139.6 sq. feet)



Second Floor

Approx. 37.6 sq. metres (404.8 sq. feet)



Total area: approx. 235.3 sq. metres (2532.7 sq. feet)





Services

The property is connected to mains water, mains gas, mains electricity and mains drainage. Gas central heating with underfloor heating on the ground floor. Double glazing.

Energy Rating

C 79 (valid until 03 April 2029)

Tenure

Freehold. Vacant possession on completion.

Council Tax

Band D (Bradford Council)

Directions

From Halifax head north on Keighley Road (A629) continuing through Ovenden, Illingworth and Causeway Foot. Still on Keighley/Halifax Road (A629) continue through the traffic lights at the junction with Thornton Road heading towards Denholme and after approximately 1 mile turn right into Denholme House Farm Drive, just before the church. Continue down Denholme House Farm Drive and straight ahead through the large gates where the property can be found on the left. David Hill for sale signs have been erected.

The New Ship, Mill Bridge, Skipton, BD23 1NJ

info@david-hill.co.uk

These particulars have been prepared as accurately and reliably as possible, but should not be relied upon as 'statement of fact'. If there is any point which is of particular importance to you, please contact the David Hill office and we would be pleased to check the information. Please do so particularly if contemplating traveling some distance to view the property. We have not tested any services or appliances and nothing in these particulars should be deemed a statement that they are in good working order or that the property is in good structural condition or otherwise. Areas, measurements, plans or distances are given as a guide only. Purchasers must satisfy themselves by inspection or otherwise regarding the items mentioned above and as to the correctness of each of the statements contained in these particulars. No employee or partner of David Hill has authority to make or give any representation or warranty in relation to the property, nor enter into any contract relating to the property on behalf of the vendor.

