

HUNTERS[®]

HERE TO GET *you* THERE



Hough Side Road

Pudsey, LS28 9JJ

£240,000



Council Tax: C



146 Hough Side Road

Pudsey, LS28 9JJ

£240,000



- Dormer type semi bungalow
- Three double bedrooms
- Ground & first floor
- Spacious interior
- Functional fitted kitchen
- Cosy reception room
- Large step-in shower
- South-facing aspect
- No chain sale
- Stunning views

This charming semi-detached dormer bungalow, nestled in a peaceful location with excellent outdoor amenities and near-by public transport links, features three spacious double bedrooms, a functional kitchen, a cosy reception room with a fireplace, and a large step-in shower and gas central heating, offering great potential for extension and delightful south-facing views.

Welcome to this delightful semi-detached dormer type bungalow that's available for sale, which might suit a family or a couple downsizing. Nestled in a peaceful location, this property is a real gem for those who love the outdoors. With near-by public transport links, green spaces, walking and cycling routes all nearby, it's ideally situated for both families and couples.

Step inside and you'll find the property in good condition. It's deceptively spacious, which will surely surprise and delight you and benefits from gas central heating. Upon entry, there's a side entrance hall with an under stairs cupboard and stairs leading to the first-floor landing. This opens to a large storeroom with potential to convert the rear roof space, subject to planning.

The property boasts three double bedrooms, each with their own unique features. Bedroom one, on the ground floor is spacious with built-in wardrobes, bedroom two includes a dormer window, eaves storage with plumbing and potential to create an ensuite, and bedroom three also features a dormer window and built-in storage.

The KITCHEN is functional with ample storage units, a worktop with sink, built-in oven/hob, and space for a washer and fridge. The LIVING room is a cosy space with a fireplace and feature electric heater, ceiling coving, and wonderful views that you'll fall in love with. The ground floor BATHROOM is equipped with a large step-in shower and pedestal washbasin. with a separate toilet next door.

The far-reaching views from this property are to be seen and enjoyed, courtesy of its south-facing aspect. There's no chain involved in the sale, and it offers great potential to extend in the roof, subject to planning.

This charming bungalow is waiting for its new owners, could that be you?

Tel: 0113 257 6198

ENTRANCE HALL

KITCHEN

9'10" x 7'10" (3.02m x 2.40m)

LIVING ROOM

16'0" x 11'10" (4.90m x 3.63m)

BEDROOM ONE

13'11" x 10'4" (4.25m x 3.17m)

SHOWER ROOM

9'4" x 5'8" (2.85m x 1.75m)

WC

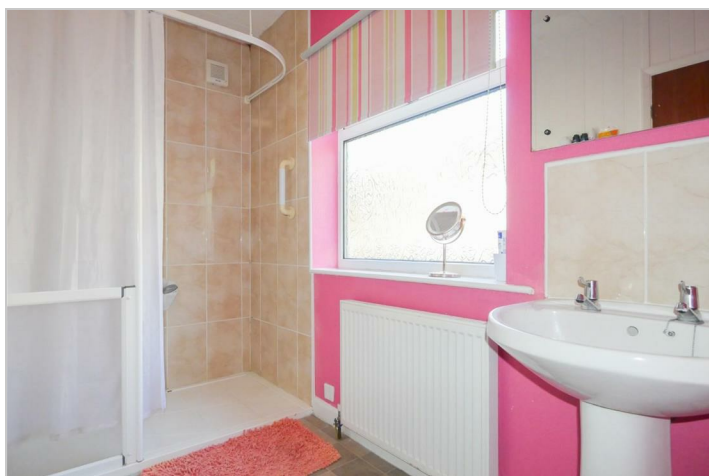
9'4" x 5'8" (2.85m x 1.75m)

BEDROOM TWO

14'11" x 9'9" (4.56m x 2.98m)

BEDROOM THREE

11'6" x 10'4" (3.53m x 3.16m)



Road Map



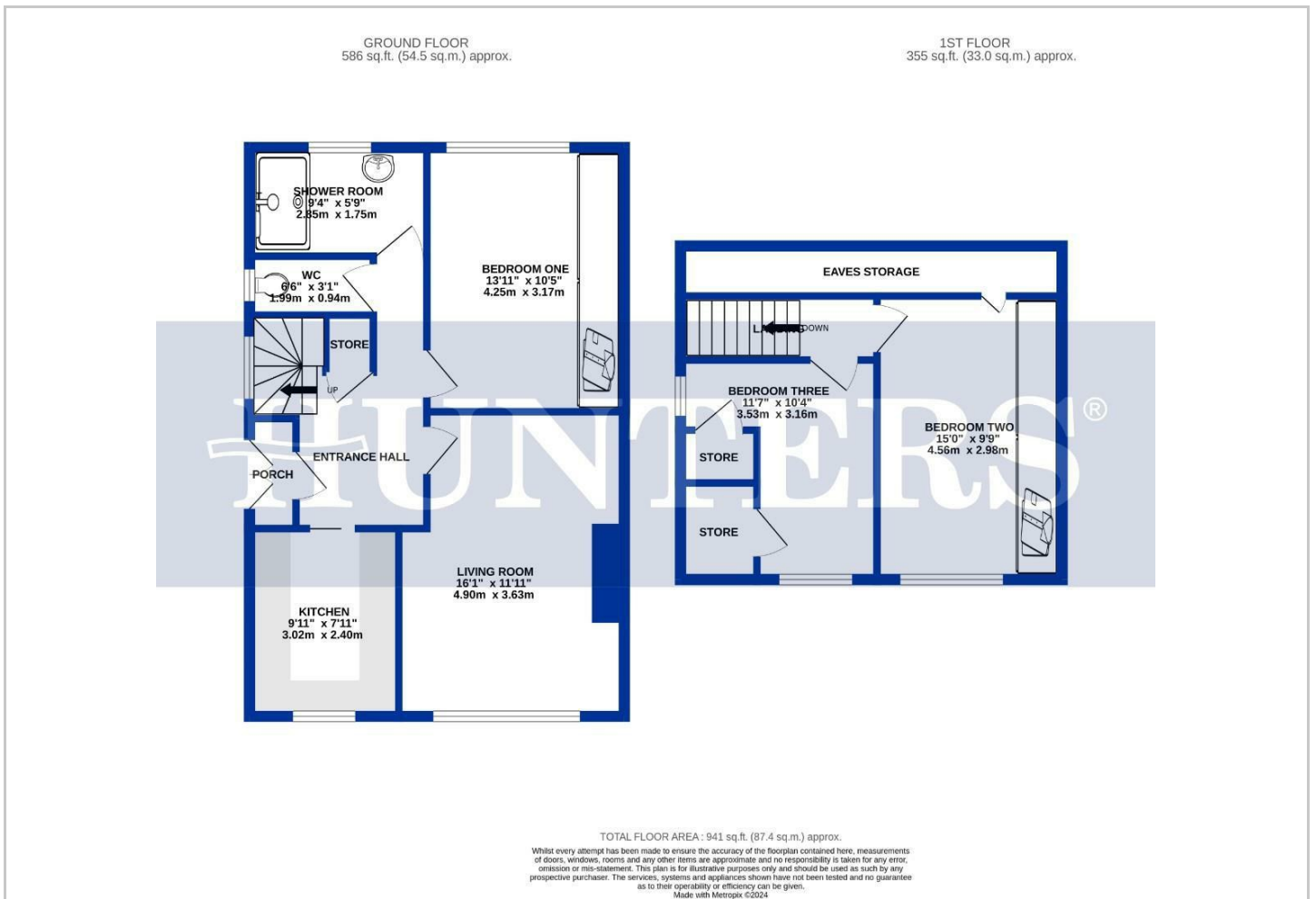
Hybrid Map



Terrain Map



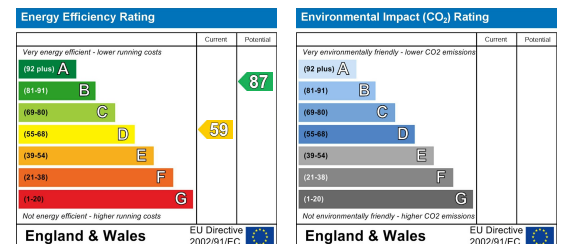
Floor Plan



Viewing

Please contact our Hunters Pudsey Office on 0113 257 6198 if you wish to arrange a viewing appointment for this property or require further information.

Energy Efficiency Graph



These particulars are intended to give a fair and reliable description of the property but no responsibility for any inaccuracy or error can be accepted and do not constitute an offer or contract. We have not tested any services or appliances (including central heating if fitted) referred to in these particulars and the purchasers are advised to satisfy themselves as to the working order and condition. If a property is unoccupied at any time there may be reconnection charges for any switched off/disconnected or drained services or appliances - All measurements are approximate. **THINKING OF SELLING?** If you are thinking of selling your home or just curious to discover the value of your property, Hunters would be pleased to provide free, no obligation sales and marketing advice. Even if your home is outside the area covered by our local offices we can arrange a Market Appraisal through our national network of Hunters estate agents.