

HUNTERS®

HERE TO GET *you* THERE



Randolph Street

Bramley, Leeds, LS13 3HT

Offers In The Region Of £179,995



2



1



1



D

Council Tax: A



10 Randolph Street

Bramley, Leeds, LS13 3HT

Offers In The Region Of £179,995



- Mature end terraced
- Two spacious double bedrooms
- Well presented throughout
- Home cook's dream kitchen
- Walk-in pantry cupboard
- Dining space in kitchen
- Fresh white bathroom suite
- Rainfall shower
- Indian stone paved garden
- On street parking

This brick end-of-terrace house, ideal for couples or sharers, features two spacious double bedrooms, a luxurious bathroom, a well-equipped kitchen with a dining area, a welcoming reception room, on-street parking, a paved garden, and additional storage options, all situated in an urban area with excellent public transport links and local amenities.

We are delighted to present this charming end-of-terrace house for sale, which is in good condition and is ideally situated in an urban area with excellent public transport links, local amenities, nearby parks, walking routes and cycling routes. This property is well-suited for couples or sharers and comes with a variety of features.

The house boasts two spacious DOUBLE sized bedrooms which provide plenty of room for comfort and relaxation. The BATHROOM is fitted with a fresh white suite, including a rainfall shower, mostly tiled walls, a vanity sink/toilet, and an extractor fan - all of which add a touch of luxury.

The KITCHEN/DINER is a home cook's dream, complete with ample storage units, worktops with sink, and space for a fridge, cooker, and washing machine. There's even a walk-in pantry cupboard for all your culinary essentials. A dining space within the kitchen makes it perfect for socialising while preparing meals.

The LIVING reception room is a welcoming space with a wall-mounted heater, ceiling coving, and a large front window, making it an inviting area for entertaining or unwinding after a long day.

Outside, the property benefits from on-street parking and an Indian stone paved garden, perfect for those summer evenings. Additional features such as gas central heating and PVC double glazing enhance the comfort and efficiency of this lovely home.

Finally, a landing with a fresh air vent and access to the loft space provides additional storage options. In summary, this is a well-presented property that offers a warm and comfortable living environment in a great location. It's worth a look!

Tel: 0113 257 6198

LIVING ROOM

11'9 x 13'5 (3.58m x 4.09m)

DINING KITCHEN

11'9 x 8'10 (3.58m x 2.69m)

BEDROOM ONE

14'11 x 11'0 (4.55m x 3.35m)

BEDROOM TWO

9'0 x 8'11 (2.74m x 2.72m)

BATHROOM



Road Map



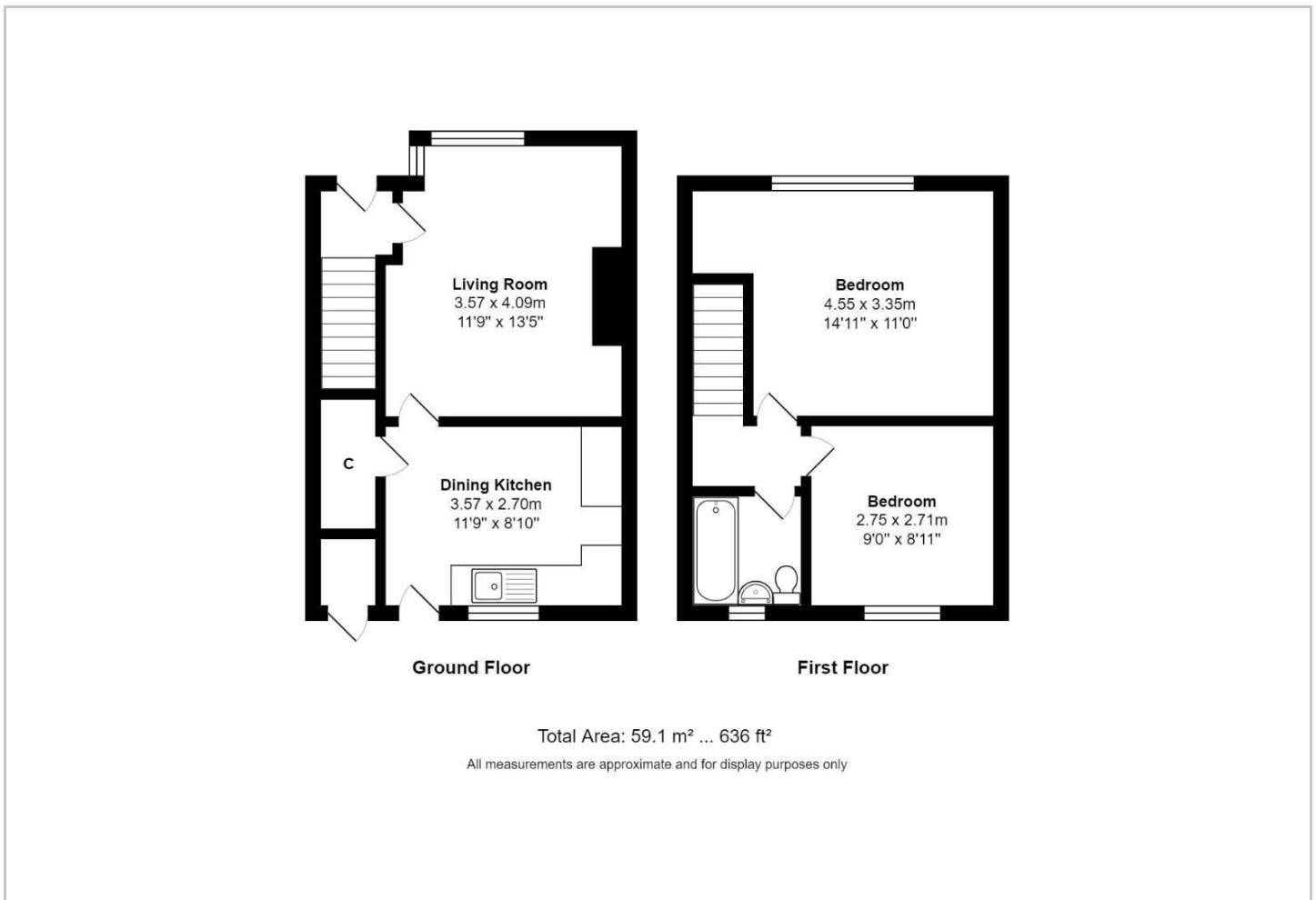
Hybrid Map



Terrain Map



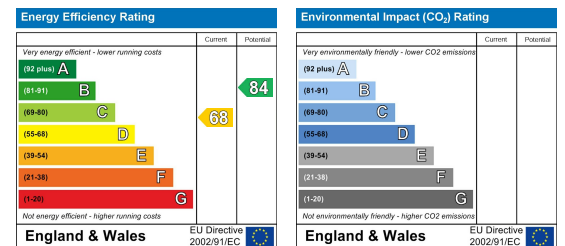
Floor Plan



Viewing

Please contact our Hunters Pudsey Office on 0113 257 6198 if you wish to arrange a viewing appointment for this property or require further information.

Energy Efficiency Graph



These particulars are intended to give a fair and reliable description of the property but no responsibility for any inaccuracy or error can be accepted and do not constitute an offer or contract. We have not tested any services or appliances (including central heating if fitted) referred to in these particulars and the purchasers are advised to satisfy themselves as to the working order and condition. If a property is unoccupied at any time there may be reconnection charges for any switched off/disconnected or drained services or appliances - All measurements are approximate. **THINKING OF SELLING?** If you are thinking of selling your home or just curious to discover the value of your property, Hunters would be pleased to provide free, no obligation sales and marketing advice. Even if your home is outside the area covered by our local offices we can arrange a Market Appraisal through our national network of Hunters estate agents.