



Onslow Gardens, South Kensington SW7



Onslow Gardens, South Kensington SW7

An expansive, unmodernised four-bedroom maisonette located in the prestigious Onslow Gardens, offering an exceptional opportunity for renovation to create a truly bespoke residence. With a generous floor area of approximately 2,369 sq ft, the apartment is arranged across the raised ground and lower ground floors of a handsome, stucco-fronted Grade II listed Victorian building.

Upon entering the property on the raised ground floor, the building contains only two other flats, one of which has lateral access from the neighbouring property, ensuring a sense of privacy.



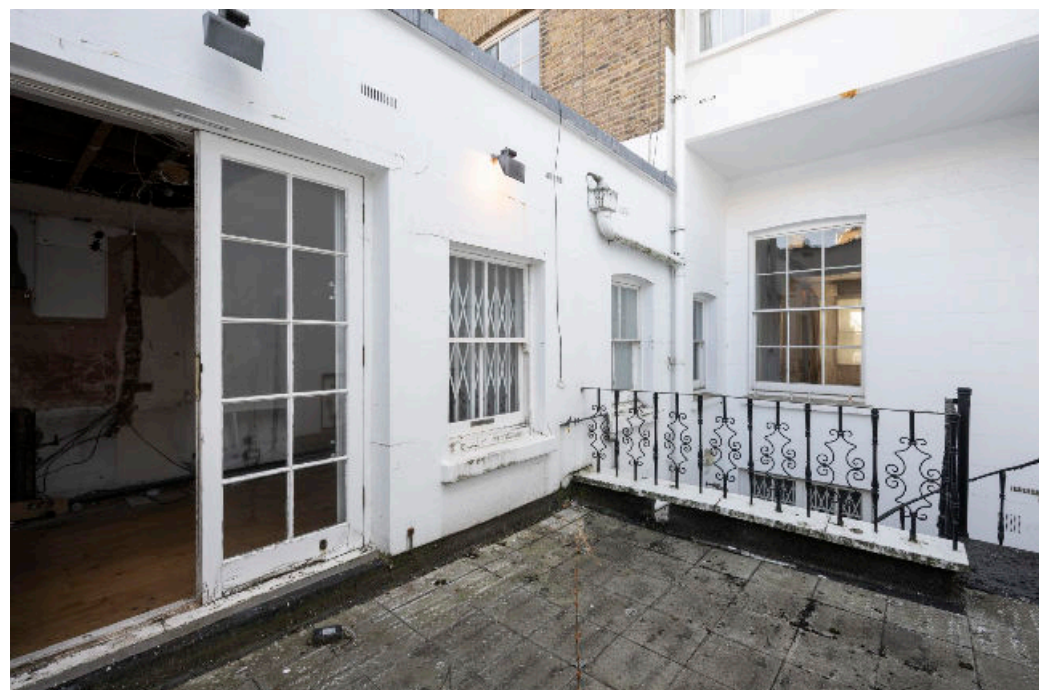
Asking price: £4,050,000

Tenure: Leasehold: approximately 114 years remaining

Service charge: approximately £15,034.64 per annum (including sinking fund contributions), reviewed every year, next review due 2025

Local authority: Royal Borough of Kensington & Chelsea

Council tax band: H



Property

The apartment features a spacious bay-fronted reception room, which is characterised by a striking ceiling height of 3.84 metres, accented with ornate period cornicing. Adjacent to the reception room is a dining room that leads to a separate kitchen with direct access to a terrace, ideal for al fresco dining and entertaining.

An unusually wide staircase descends to the lower ground floor, where the principal bedroom is discreetly positioned at the rear, offering generous integrated storage and an en suite. Two further spacious double bedrooms are also located on this floor, one with access to the terrace and the other with an en suite. Additionally, a flexible single bedroom/study also has direct access to the terrace. The lower ground floor benefits from excellent natural light, high ceilings, and ample hallway storage.

Location

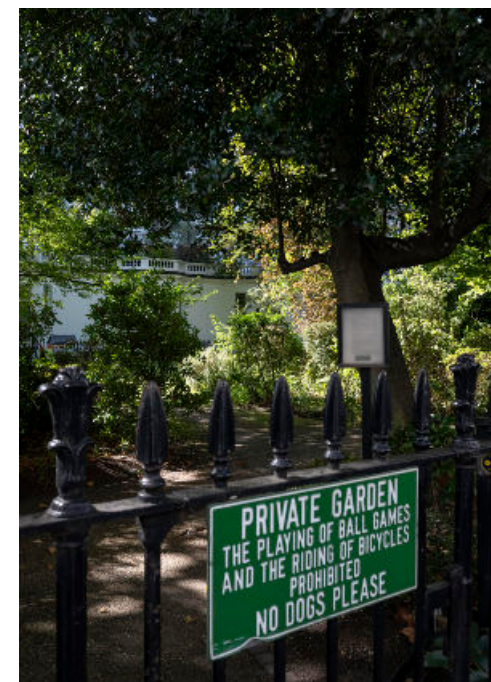
Onslow Gardens is arguably one of South West London's most prestigious addresses and is well located for the shops and restaurants of South Kensington, as well as providing easy access to the underground stations of both South Kensington and Gloucester Road, not to mention easy access to Heathrow.

The apartment is within close proximity to South Kensington Underground Station, which is serviced by the Circle, District, and Piccadilly lines, enabling excellent transport connections to explore the city with ease.





Please note that we have been unable to confirm if there is ground rent. You should ensure that you or your advisors make your own enquiries.



Onslow Gardens SW7

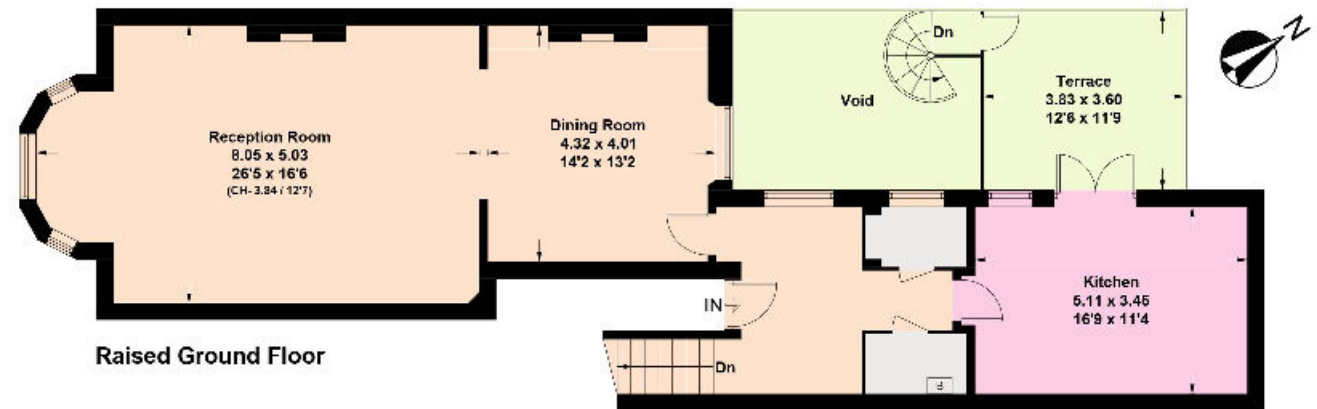
Approximate Gross Internal Floor Area

220.1 sq m / 2,369 sq ft

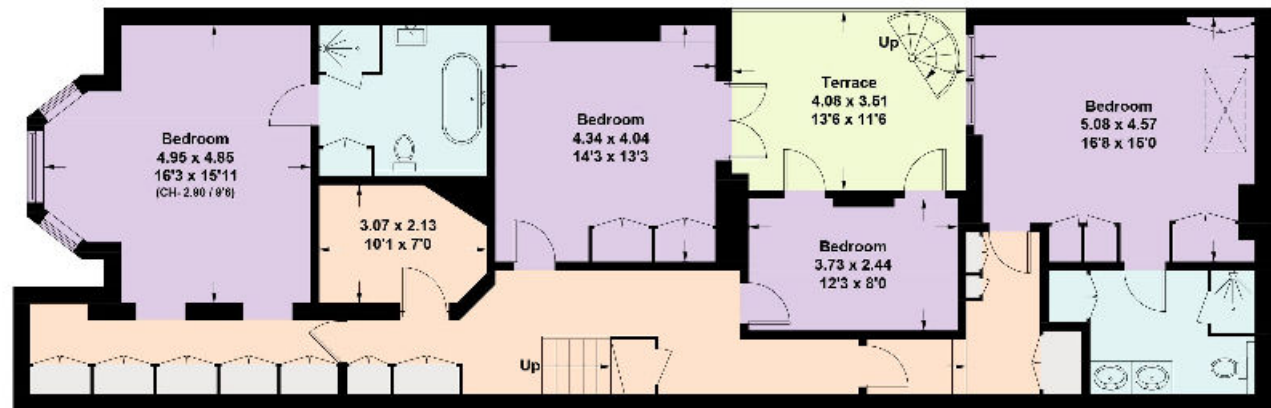
Including Limited Use Area

(0.9 sq m / 10 sq ft)

This plan is for guidance only and must not be relied upon as a statement of fact. Attention is drawn to the important notice on the last page of the text of the Particulars.



Raised Ground Floor



Lower Ground Floor

Knight Frank

South Kensington Sales

160 Old Brompton Road

London

SW5 0BA

[knightfrank.co.uk](https://www.knightfrank.co.uk)

I would be delighted to tell you more

Rebecca Jane Higgins

Rana Rizk

020 7871 4115

020 3910 9737

rebecca.higgins@knightfrank.com rana.rizk@knightfrank.com



Fixtures and fittings: A list of the fitted carpets, curtains, light fittings and other items fixed to the property which are included in the sale (or may be available by separate negotiation) will be provided by the Seller's Solicitors.

Important Notice: 1. Particulars: These particulars are not an offer or contract, nor part of one. You should not rely on statements by Knight Frank LLP in the particulars or by word of mouth or in writing ("information") as being factually accurate about the property, its condition or its value. Neither Knight Frank LLP nor any joint agent has any authority to make any representations about the property, and accordingly any information given is entirely without responsibility on the part of the agents, seller(s) or lessor(s). 2. Photos, Videos etc: The photographs, property videos and virtual viewings etc. show only certain parts of the property as they appeared at the time they were taken. Areas, measurements and distances given are approximate only. 3. Regulations etc: Any reference to alterations to, or use of, any part of the property does not mean that any necessary planning, building regulations or other consent has been obtained. A buyer or lessee must find out by inspection or in other ways that these matters have been properly dealt with and that all information is correct. 4. VAT: The VAT position relating to the property may change without notice. 5. To find out how we process Personal Data, please refer to our Group Privacy Statement and other notices at <https://www.knightfrank.com/legals/privacy-statement>.

Particulars dated September 2024. Photographs and videos dated September 2024.

All information is correct at the time of going to print. Knight Frank is the trading name of Knight Frank LLP. Knight Frank LLP is a limited liability partnership registered in England and Wales with registered number OC305934. Our registered office is at 55 Baker Street, London W1U 8AN. We use the term 'partner' to refer to a member of Knight Frank LLP, or an employee or consultant. A list of members names of Knight Frank LLP may be inspected at our registered office. If you do not want us to contact you further about our services then please contact us by either calling 020 3544 0692, email to marketing.help@knightfrank.com or post to our UK Residential Marketing Manager at our registered office (above) providing your name and address.