



Dove Mews, London SW5

---



# Dove Mews, London SW5

Tucked away in the quiet location of Dove Mews, this charming two/three bedroom freehold house is arranged over three floors with impressive entertaining space. This is an exciting opportunity to acquire a delightful residence with a private entrance and a roof terrace.

Entering via its own private entrance, the ground floor contains a bright and spacious reception room, which is characterised by floor-to-ceiling fitted shelving, an attractive fireplace and a striking ceiling height of 3 metres, which creates a wonderful sense of volume and grandeur.



2-3



2



2



1



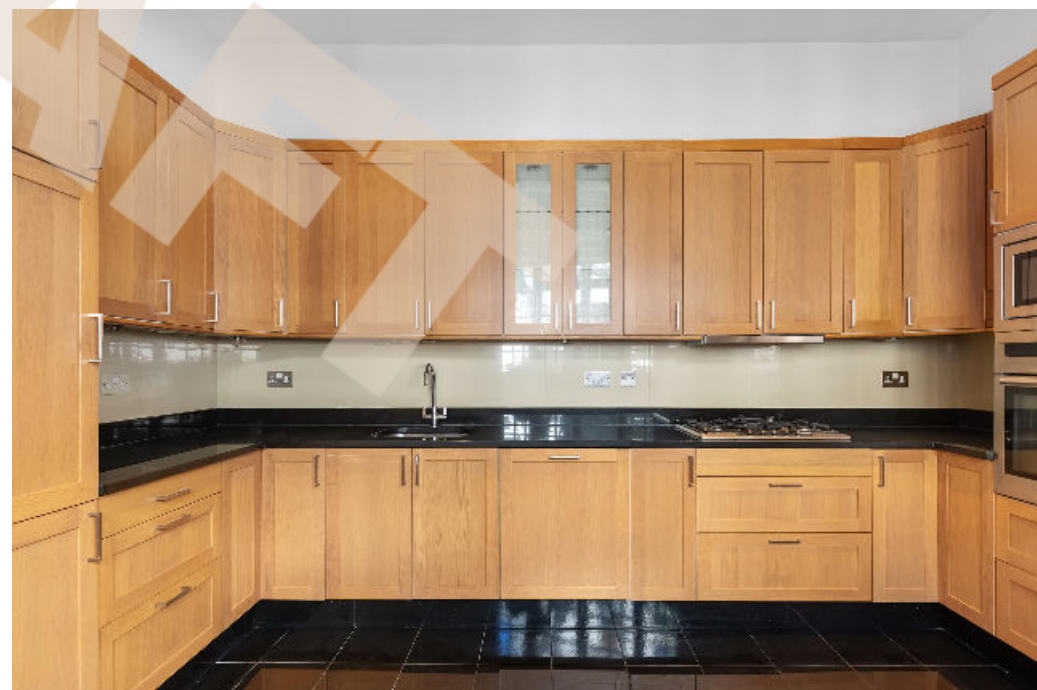
EPC  
E

**Asking price:** £1,575,000

**Tenure:** Available freehold

**Local authority:** Royal Borough of Kensington and Chelsea

**Council tax band:** H



A well-appointed kitchen is adjacent to the reception room, which features integrated appliances, a gas hob and ample cabinetry/worktop space.

The principal bedroom is discreetly positioned on the first floor, and it is served by extensive wardrobe storage and an en suite bathroom. A further double bedroom with integrated storage is on this floor, and an additional bedroom, which can be used as a study if desired. A conveniently located separate family bathroom is also accessible via the hallway. Upstairs, there is a delightful sunroom which gives access to a generous-sized roof terrace, a space perfect for al fresco dining and entertaining.

The property's unique features, including its private entrance and secluded location on a charming cobbled mews, work together to create an atmosphere of complete privacy.

Dove Mews is cobbled mews situated between Rosary Gardens and Bina Gardens. The area is well-known for its exceptional transportation links, restaurants, pubs and fantastic shopping opportunities.





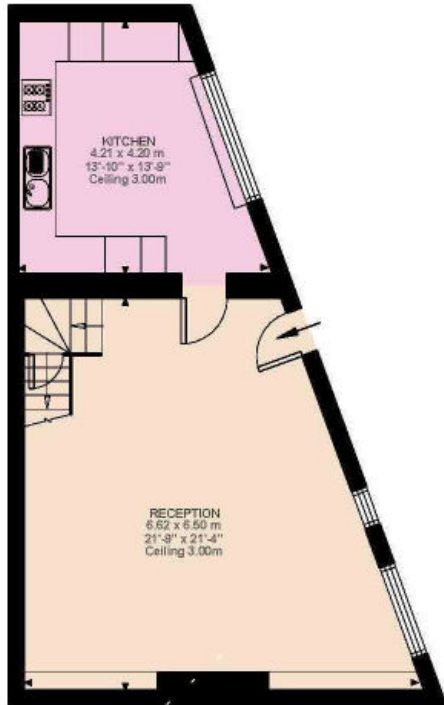
Please note, the furniture in this image has been virtually staged.



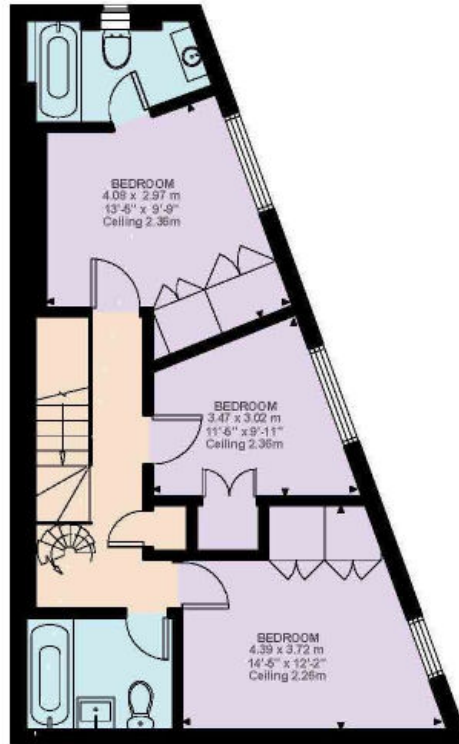
Please note, the furniture in this image has been virtually staged.



Dove Mews, SW5  
 Approximate Gross Internal Area  
 122.94 sq m / 1,323 sq ft

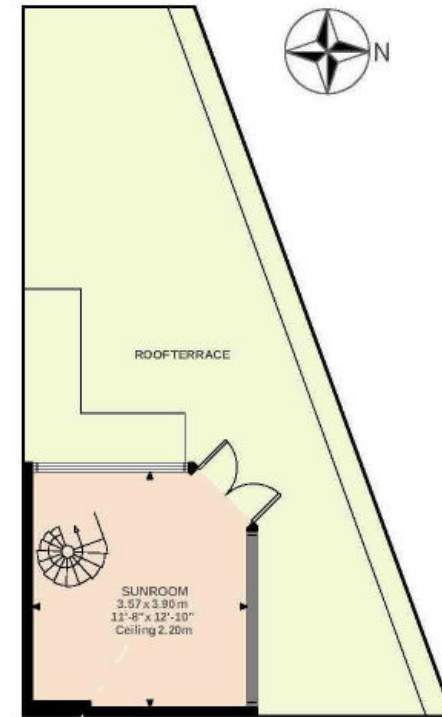


Ground Floor  
 561 sq ft



First Floor  
 681 sq ft

This plan is for guidance only and must not be relied upon as a statement of fact. Attention is drawn to the important notice on the last page of the text of the Particulars.



Second Floor  
 145 sq ft

**Knight Frank**  
 South Kensington Sales  
 160 Old Brompton Road  
 London  
 SW5 0BA  
[knightfrank.co.uk](http://knightfrank.co.uk)

I would be delighted to tell you more  
**Jordanna Mancina**  
 020 3892 3573  
[jordanna.mancina@knightfrank.com](mailto:jordanna.mancina@knightfrank.com)



Fixtures and fittings: A list of the fitted carpets, curtains, light fittings and other items fixed to the property which are included in the sale (or may be available by separate negotiation) will be provided by the Seller's Solicitors.  
 Important Notice: 1. Particulars: These particulars are not an offer or contract, nor part of one. You should not rely on statements by Knight Frank LLP in the particulars or by word of mouth or in writing ("information") as being factually accurate about the property, its condition or its value. Neither Knight Frank LLP nor any joint agent has any authority to make any representations about the property, and accordingly any information given is entirely without responsibility on the part of the agents, seller(s) or lessor(s). 2. Photos, Videos etc: The photographs, property videos and virtual viewings etc. show only certain parts of the property as they appeared at the time they were taken. Areas, measurements and distances given are approximate only. 3. Regulations etc: Any reference to alterations to, or use of, any part of the property does not mean that any necessary planning, building regulations or other consent has been obtained. A buyer or lessee must find out by inspection or in other ways that these matters have been properly dealt with and that all information is correct. 4. VAT: The VAT position relating to the property may change without notice. 5. To find out how we process Personal Data, please refer to our Group Privacy Statement and other notices at <https://www.knightfrank.com/legals/privacy-statement>.  
 Particulars dated April 2024. Photographs and videos dated April 2024.  
 All information is correct at the time of going to print. Knight Frank is the trading name of Knight Frank LLP. Knight Frank LLP is a limited liability partnership registered in England and Wales with registered number OC305934. Our registered office is at 55 Baker Street, London W1U 8AN. We use the term 'partner' to refer to a member of Knight Frank LLP, or an employee or consultant. A list of members names of Knight Frank LLP may be inspected at our registered office. If you do not want us to contact you further about our services then please contact us by either calling 020 3544 0692, email to [marketing.help@knightfrank.com](mailto:marketing.help@knightfrank.com) or post to our UK Residential Marketing Manager at our registered office (above) providing your name and address.