



EGERTON ROAD
WEYBRIDGE

JACKSON-STOPS 

EGERTON ROAD, WEYBRIDGE, KT13

ASKING PRICE: £1,500,000

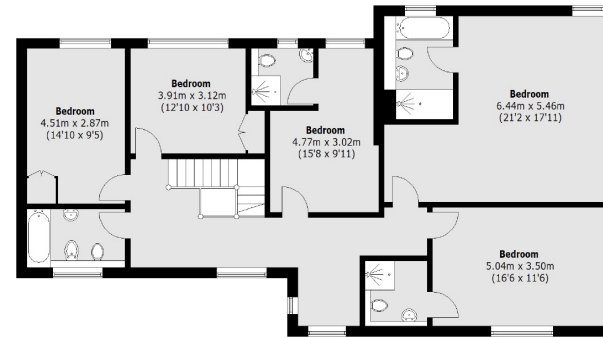
A detached house of 3,500 sq ft on the slopes of St. George's Hill, set over two floors the ground floor comprising of four well sized reception areas and large kitchen and utility, the first floor currently is laid out with five bedrooms and four bathrooms. There is garaging and gardens to the side of the house.

Weybridge and the surrounding towns offer an extensive range of leisure pursuits, including river walks and bike rides along the towpaths of the Thames and the Wey. Weybridge town centre has a range of both high street chains and individual boutiques, including a Waitrose supermarket and an excellent mix of restaurants and gastro pubs including The Waverley, Giggling Squid, The Ship Hotel, The Minnow and The Queens Head with Mimi's and the shops of the Queens Road a short walk away.

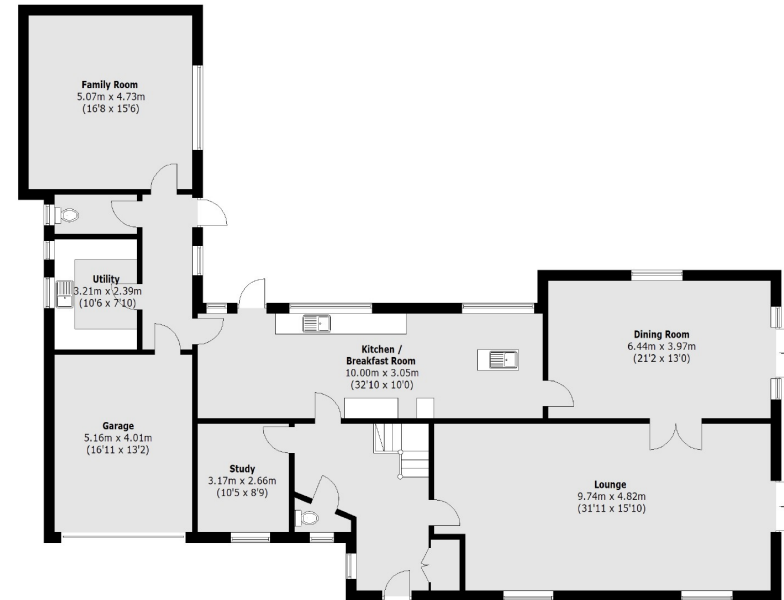
KEY FEATURES

- Detached House
- 3,500 Sq Ft
- Five Bedrooms
- Four Bathrooms
- Four Receptions Rooms
- Prime Location

Energy Rating: D. We aim to make our particulars both accurate and reliable. However they are not guaranteed; nor do they form part of an offer or contract. If you require clarification on any points then please contact us, especially if you are travelling some distance to view. Please note that appliances and heating systems have not been tested and therefore no warranties can be given as to their good working order.



First Floor



Ground Floor

Total area (approx.): 325.9 sq. m (3,508 Sq. ft)
(Including Garage)

37 QUEEN'S ROAD, WEYBRIDGE, SURREY, KT13 9UQ

01932 821 160

weybridge@jackson-stops.co.uk

jackson-stops.co.uk

JACKSON-STOPS 