



**NEW HAW ROAD**  
ADDLESTONE

**JACKSON-STOPS** 

## NEW HAW ROAD ADDLESTONE, KT15

ASKING PRICE: £695,000

An immaculately presented, four bedroom family home with two bathrooms, reception, modern kitchen with bi-folds to the garden this house ticks all the boxes. Stylish home laid over two floors. The ground floor accommodation provides reception room, fabulous kitchen, separate utility.

Bedroom accommodation is no less impressive; there are four double bedrooms in total, two can be located on the ground floor with the master bedroom, shower room and on the first floor there are two further doubles all with fitted wardrobe space.

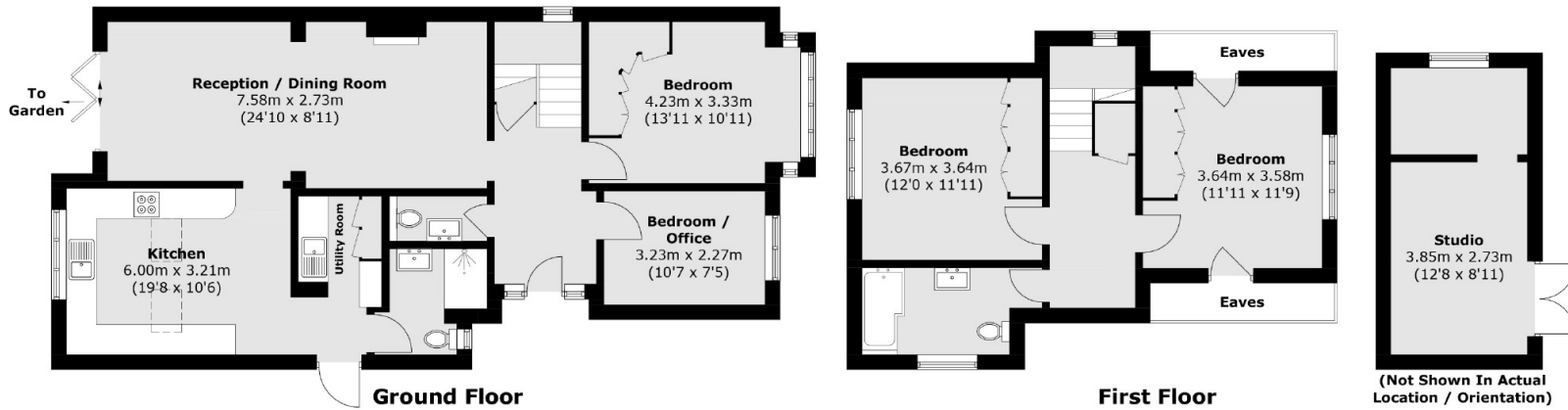
Externally the house continues to impress with west facing private garden with fence surround, mainly laid to lawn with patio area to the rear and off street parking positioned at the front for three cars. New Haw village is within a mile offering shops and amenities, whilst to the end of the Byfleet Road there is access to Byfleet/ New Haw train station providing direct line services into London Waterloo. Local schools are The Grange and Fulbrook offering both junior and secondary education. By road there is access to both M25 / A3, whilst Heathrow and Gatwick airports are accessible within 20 & 32 miles respectively.

### KEY FEATURES

- Detached
- Four bedrooms
- Two Bathrooms
- Off-Street Parking
- Garden
- Freehold







Total area (approx.): 128.0 sq. m (1377.8 sq. ft)  
(Excluding Eaves)  
Outbuilding : 15.9 sq. m (171.1 sq. ft)

Energy Rating: . We aim to make our particulars both accurate and reliable. However they are not guaranteed; nor do they form part of an offer or contract. If you require clarification on any points then please contact us, especially if you are travelling some distance to view. Please note that appliances and heating systems have not been tested and therefore no warranties can be given as to their good working order.

**ASKING PRICE: £695,000**

WEYBRIDGE

01932 821 160

weybridge@jackson-stops.co.uk

jackson-stops.co.uk

**JACKSON-STOPS** 