



MONUMENT GREEN
WEYBRIDGE

JACKSON-STOPS 

MONUMENT GREEN, WEYBRIDGE, KT13

ASKING PRICE: £350,000

Moments away from Weybridge High Street, on offer a charming Victorian top floor apartment, providing stylish interior with two bedrooms, open plan kitchen diner and stunning bathroom. The entire property is impeccably maintained. Superb central location with everything you need at your doorstep.

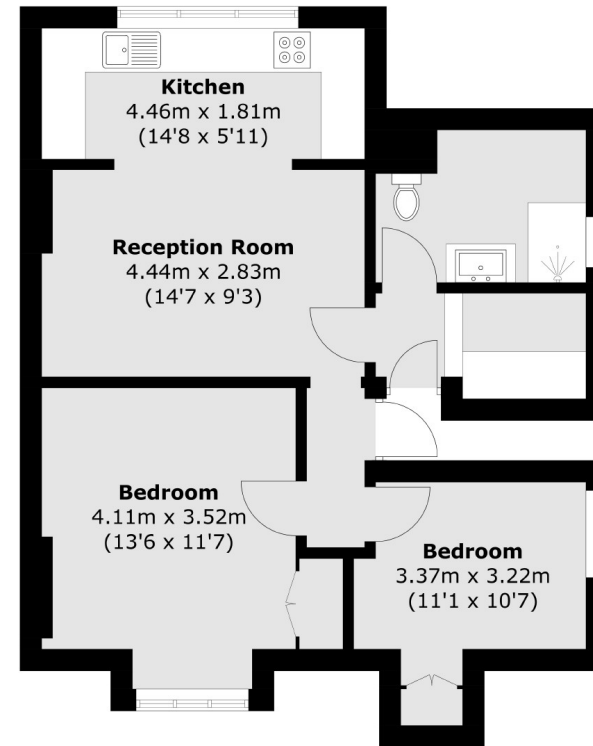
The apartment is situated moments from the centre of Weybridge and offering quick and easy access to all the local shops, including a Waitrose Supermarket and Gails bakery, amenities and still within easy reach of the River Wey and the train station.

Weybridge and the surrounding towns offer an extensive range of leisure pursuits including river walks and bike rides along the towpaths of the Thames and the Wey.

KEY FEATURES

- Central Weybridge Location
- Two Bedrooms
- Period Character and Charm
- No Onward Chain
- Allocated Parking
- Modern Finish

Energy Rating: . We aim to make our particulars both accurate and reliable. However they are not guaranteed; nor do they form part of an offer or contract. If you require clarification on any points then please contact us, especially if you are travelling some distance to view. Please note that appliances and heating systems have not been tested and therefore no warranties can be given as to their good working order.



Total area (approx.): 58.0 sq. m (624.3 sq. ft)

ASKING PRICE: £350,000

WEYBRIDGE

01932 821 160

weybridge@jackson-stops.co.uk

jackson-stops.co.uk

JACKSON-STOPS 