



WOLSEY GROVE
ESHER

JACKSON-STOPS 

WOLSEY GROVE ESHER, KT10

ASKING PRICE: £2,300 PCM

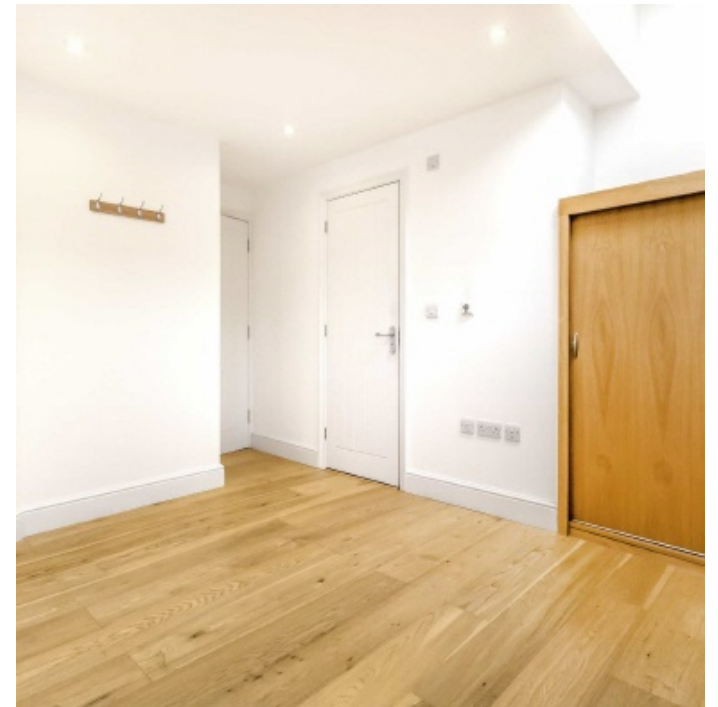
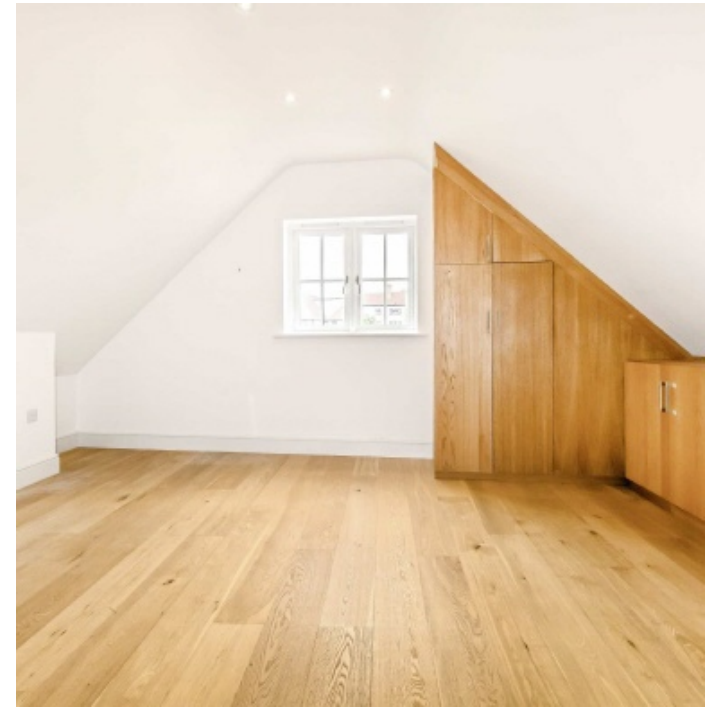
This modern two bedroom, two bathroom house boasts a diverse living set up with two reception rooms, garage and private patio garden.

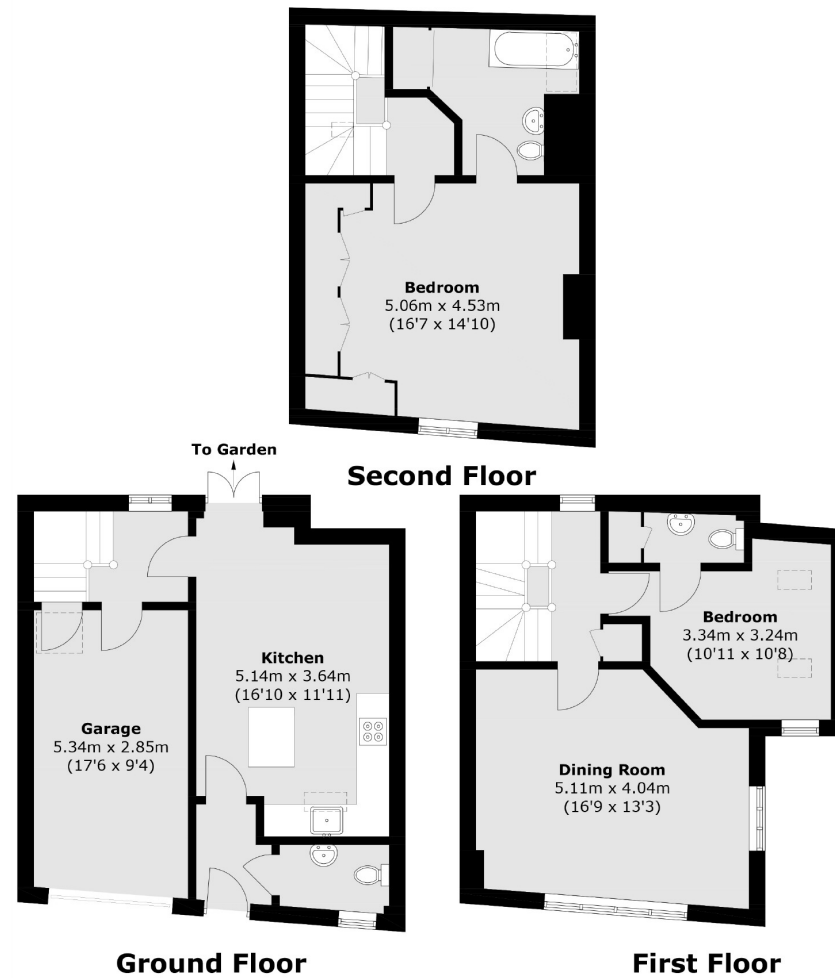
Esher high street offers exclusive neighbourhoods offering a range of both high street chains and individual boutiques, including a Waitrose supermarket and a good mix of bars and restaurants.



KEY FEATURES

- Part Furnished
- Two Double Bedroom
- Two Reception Rooms
- Two Bathrooms + W.C
ground level
- Garage





Total area (approx.): 124 sq. m (1,334.6 sq. ft)

Energy Rating: . We aim to make our particulars both accurate and reliable. However they are not guaranteed; nor do they form part of an offer or contract. If you require clarification on any points then please contact us, especially if you are travelling some distance to view. Please note that appliances and heating systems have not been tested and therefore no warranties can be given as to their good working order.

ASKING PRICE: £2,300 PCM

WEYBRIDGE

01932 859 355

weybridge@jackson-stops.co.uk

jackson-stops.co.uk

JACKSON-STOPS 