



**OATLANDS GREEN**  
WEYBRIDGE

**JACKSON-STOPS** 

## OATLANDS GREEN WEYBRIDGE, KT13

ASKING PRICE: £695,000

A great opportunity to purchase this contemporary four bedroom family home with private garden and garage located in the Oatlands area of Weybridge in a quiet cul-de-sac and in excellent catchment area for local schools set in a very secluded and picturesque setting.

Having been modernised by the current owners this house does not disappoint. You will be impressed as you walk into the property with, welcoming entrance hall, downstairs shower room, two reception rooms and double aspect kitchen / dining room with access to the private garden.

The first floor continues to impress with three bedrooms in total and modern family bathroom. The fourth bedroom is located on the second floor with eves storage.

Externally the property has a garage, pretty well kept rear garden and the use of comprehensive communal grounds.

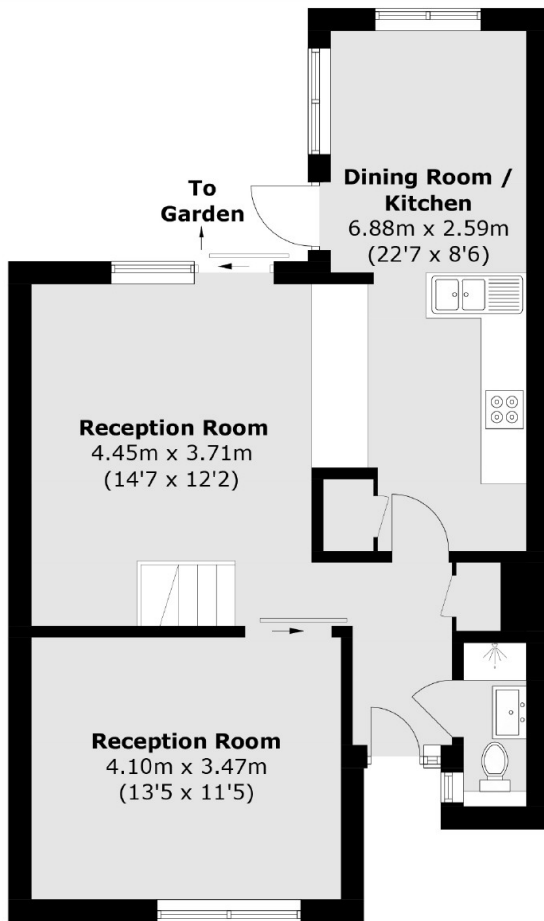
Weybridge and the surrounding towns offer an extensive range of leisure pursuits including river walks and bike rides along the towpaths of the Thames and the Wey.

### KEY FEATURES

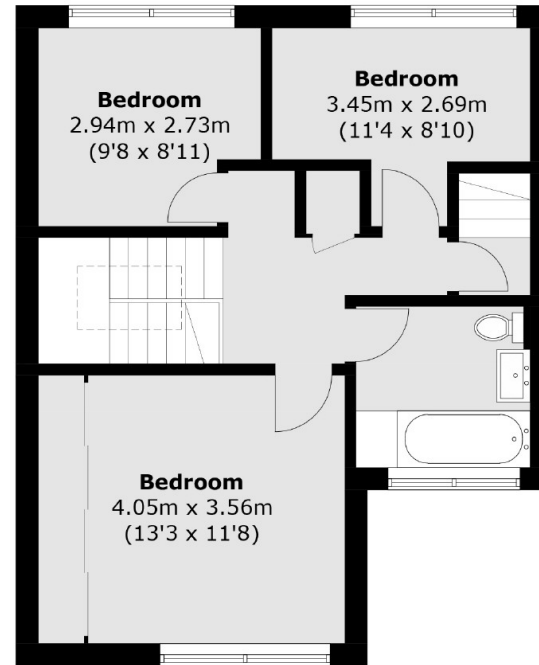
- Contemporary Home
- Four Bedrooms
- Two Bathrooms
- Three Reception Rooms
- Private Garden
- Garage



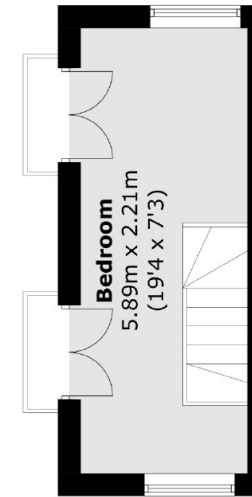




**Ground Floor**



**First Floor**



**Second Floor**

Total area (approx.): 118.7 sq. m (1,277.6 sq. ft)

Energy Rating: . We aim to make our particulars both accurate and reliable. However they are not guaranteed; nor do they form part of an offer or contract. If you require clarification on any points then please contact us, especially if you are travelling some distance to view. Please note that appliances and heating systems have not been tested and therefore no warranties can be given as to their good working order.

**ASKING PRICE: £695,000**

**WEYBRIDGE**

**01932 821 160**

weybridge@jackson-stops.co.uk

jackson-stops.co.uk

**JACKSON-STOPS**

