



MEADOW VIEW
CHERTSEY

JACKSON-STOPS 

MEADOW VIEW CHERTSEY, KT16

ASKING PRICE: £749,950

A modern detached family home in excellent condition and beautifully looked after by the current owners. Offering four double bedrooms, two with ensuite and a family bathroom. The ground floor has been improved and altered to enlarge the kitchen and add in a utility room and garage/storage room to compliment the large main reception room, that leads to the raised decking area overlooking the maintenance free, westerly facing back garden. Air conditioning to primary rooms. To the front is off street parking.

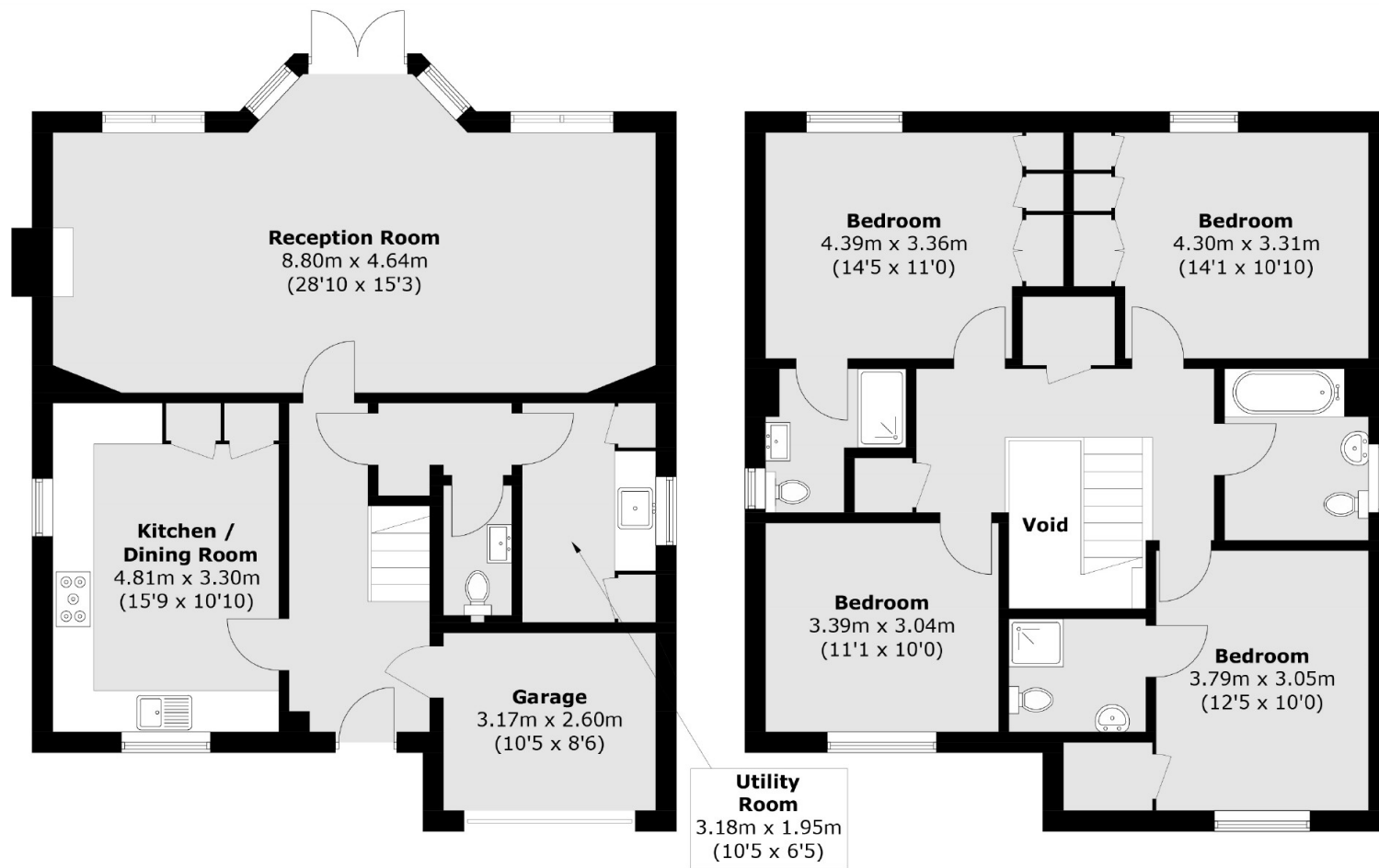
Chertsey and the surrounding towns offer an extensive range of good schools, leisure pursuits including river walks and bike rides along the towpaths of the River Bourne. Chertsey town centre has a range of both high street chains and individual boutiques, including and an excellent mix of restaurants and gastro pubs.

KEY FEATURES

- Detached
- Four bedrooms
- Three Bathrooms
- Off-Street Parking
- Garden
- Freehold







Ground Floor

First Floor

Total area (approx.): 161.8 sq. m (1,741.6 sq. ft)
(Including Garage / Excluding Void)

Energy Rating: C. We aim to make our particulars both accurate and reliable. However they are not guaranteed; nor do they form part of an offer or contract. If you require clarification on any points then please contact us, especially if you are travelling some distance to view. Please note that appliances and heating systems have not been tested and therefore no warranties can be given as to their good working order.

ASKING PRICE: £749,950

WEYBRIDGE

01932 821 160

weybridge@jackson-stops.co.uk

jackson-stops.co.uk

JACKSON-STOPS 