



EGERTON ROAD
WEYBRIDGE

JACKSON-STOPS 

EGERTON ROAD WEYBRIDGE, KT13

ASKING PRICE: £2,495 PCM

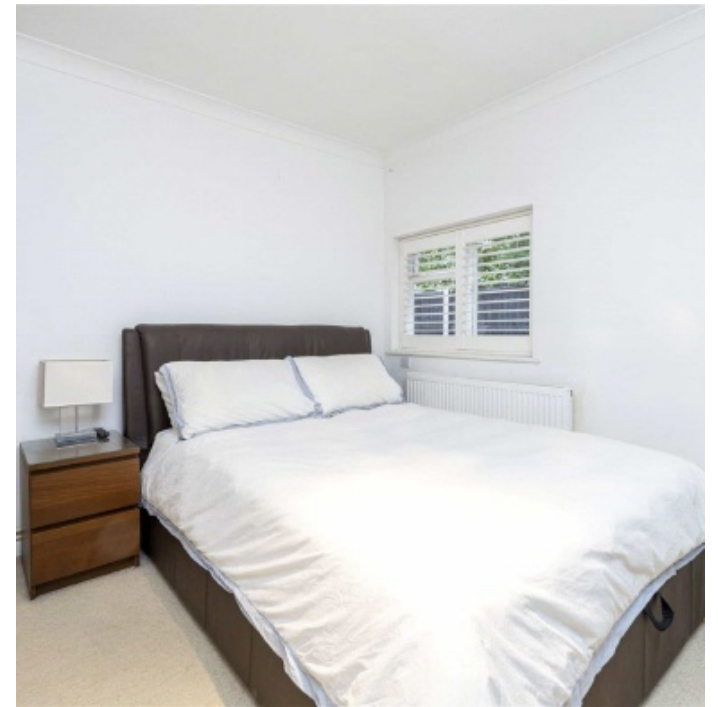
A spacious ground floor conversion ideally located for the train station and Queens Road amenities. Accommodation comprises of a large living room, master bedroom with en-suite bathroom and built-in wardrobes, further bedroom, shower room, kitchen with door to a private garden, study and two parking spaces.

Weybridge is well-connected by road and rail, with easy access to the A3 and the M25 motorways, and frequent trains to London Waterloo, Guildford, and Woking. Weybridge is also close to some of the best schools in Surrey.

KEY FEATURES

- Three Bedrooms
- Two Bathrooms
- Private Garden
- Allocated Parking
- Many Period Features
- Easy Reach To Queens





Energy Rating: . We aim to make our particulars both accurate and reliable. However they are not guaranteed; nor do they form part of an offer or contract. If you require clarification on any points then please contact us, especially if you are travelling some distance to view. Please note that appliances and heating systems have not been tested and therefore no warranties can be given as to their good working order.

37 QUEEN'S ROAD, WEYBRIDGE, SURREY, KT13 9UQ

01932 859 355

weybridge@jackson-stops.co.uk

jackson-stops.co.uk

JACKSON-STOPS 