



THAMES CLOSE
CHERTSEY

JACKSON-STOPS 

THAMES CLOSE CHERTSEY, KT16

ASKING PRICE: £749,950

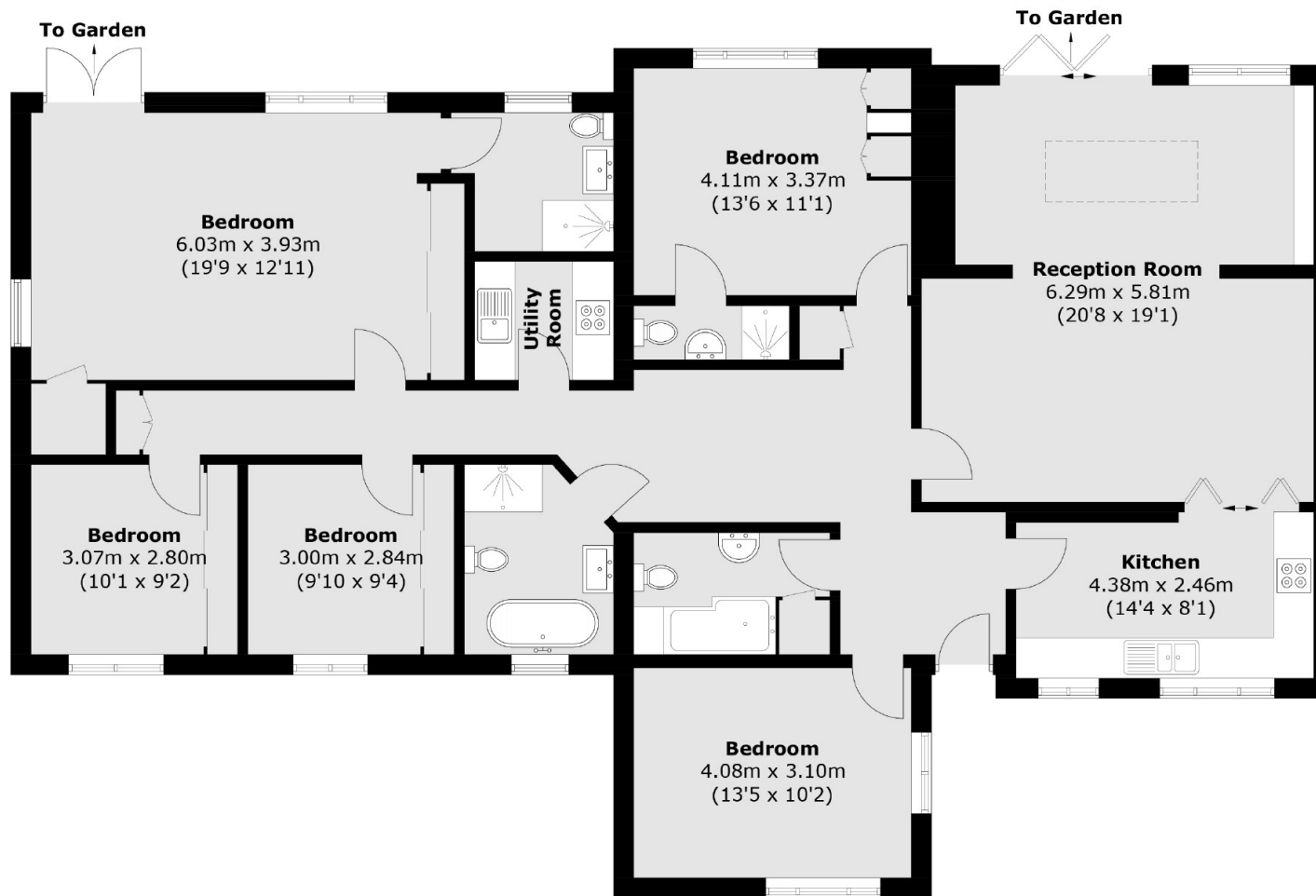
This delightful and large single storey property has around 1,900sqft of living space with an adaptable layout, The current owners have extended the house to offer four bedrooms with four bathrooms, large main reception room with adjoining kitchen and secondary kitchen/utility area and a second reception area or occasional bedroom five. All presented in excellent condition with a spacious and flowing feel throughout, The outside space wraps around three sides of the house and with off street parking to the front, on this quiet no through road, the is an excellent and convenient home. The house is conveniently located for for all the leisure and entertainment options of Chertsey and the surrounding towns of Weybridge and Shepperton. River access and the Thames towpath is nearby as is access to the M25 and airports.

KEY FEATURES

- Single Storey Living
- Four Double Bedrooms
- Four Bathrooms
- Open Plan Reception
- Wrap Around Garden
- No Through Road







Total area (approx.): 172.4 sq. m (1,855.7 sq. ft)

Energy Rating: . We aim to make our particulars both accurate and reliable. However they are not guaranteed; nor do they form part of an offer or contract. If you require clarification on any points then please contact us, especially if you are travelling some distance to view. Please note that appliances and heating systems have not been tested and therefore no warranties can be given as to their good working order.

37 QUEEN'S ROAD, WEYBRIDGE, SURREY, KT13 9UQ

01932 821 160

weybridge@jackson-stops.co.uk

jackson-stops.co.uk

JACKSON-STOPS 