

Mike
Dobson



49 The Haywain

South Milford, Leeds, LS25 5GE

£280,000

49 The Haywain

Nestled in the charming village of South Milford, Leeds, lies a delightful end townhouse located on The Haywain. This property boasts three reception rooms, kitchen, ground floor WC and three cosy bedrooms, plus an ensuite to the main bedroom and family bathroom/WC to the first floor, making it the perfect family home.

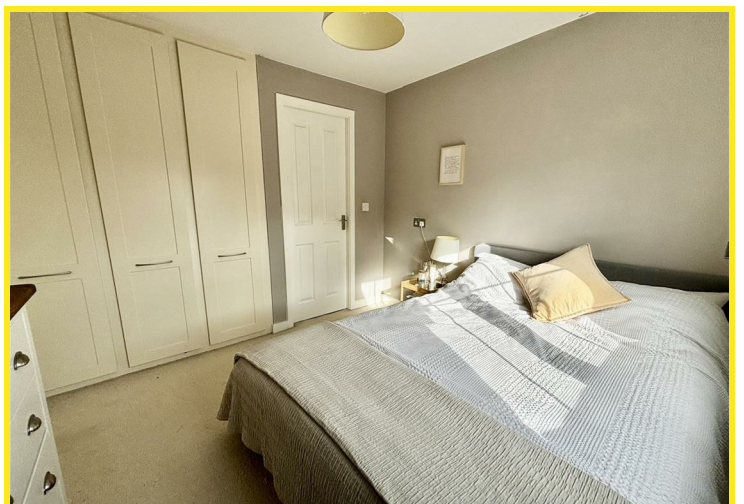
Step inside to discover a tastefully extended downstairs area, creating a seamless open-plan living, dining, and kitchen space. The lounge, with its inviting ambiance, can easily transform into a snug retreat for those cosy evenings in.

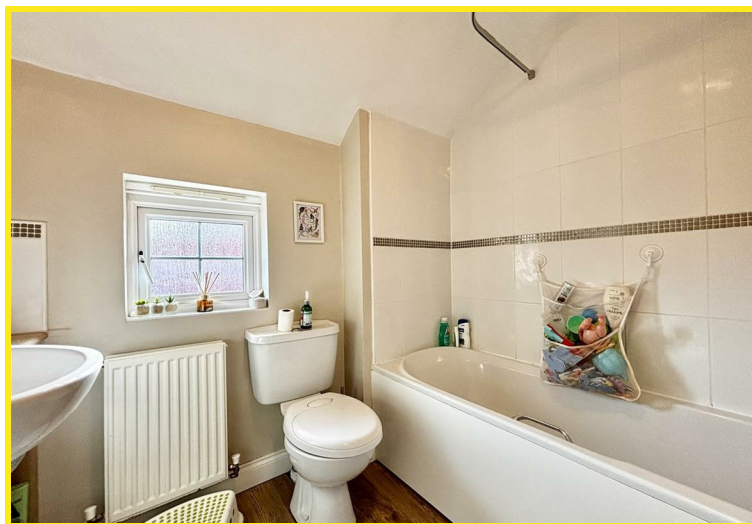
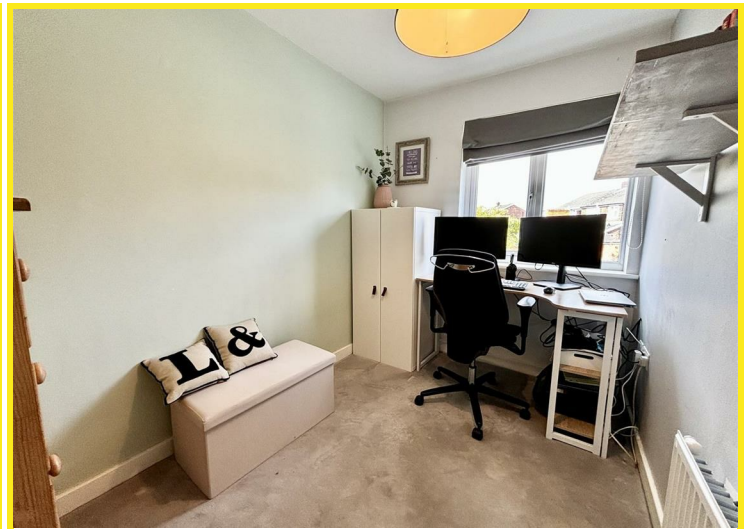
The modern fitted kitchen is a culinary enthusiast's dream, equipped with a range of integrated appliances including a fridge freezer, microwave, oven, gas hob, and dishwasher. Adjacent to the kitchen, a conservatory awaits, serving as a charming dining room complete with underfloor heating for added comfort.

The bedrooms are thoughtfully designed, with fitted wardrobes in the first and second bedrooms, ensuring ample storage space. The main bedroom features an en-suite shower room for added convenience, while a family bathroom caters to the needs of the household.

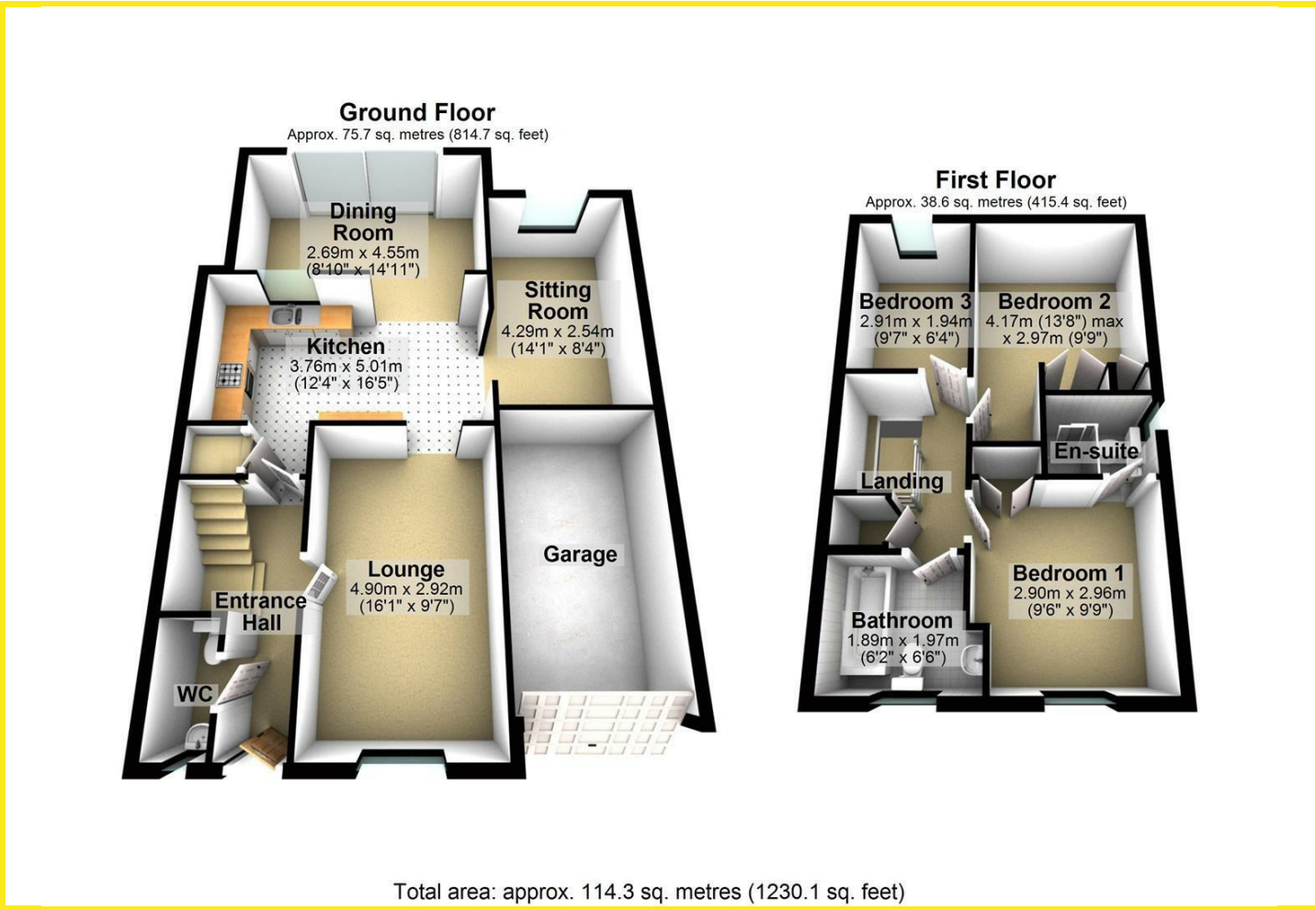
Externally, there is off road parking for two cars leading to a single garage with up and over door, accessible also from the sitting room in the house. To the rear is a private and enclosed garden with paved seating area and artificial lawn providing easy maintenance.

With its blend of modern amenities and cosy charm, The Haywain offers a warm and inviting atmosphere for those seeking a place to call home. Don't miss the opportunity to make this townhouse your own and experience the best of village living in South Milford.

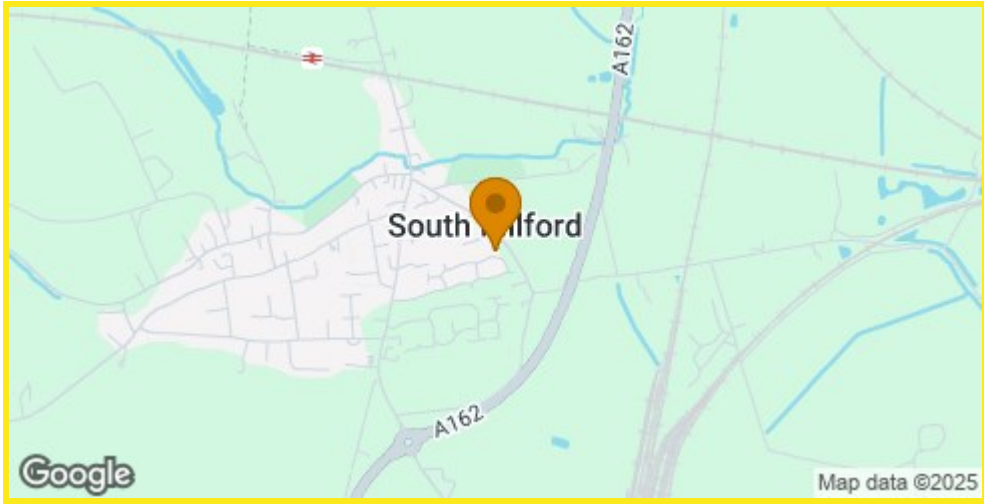




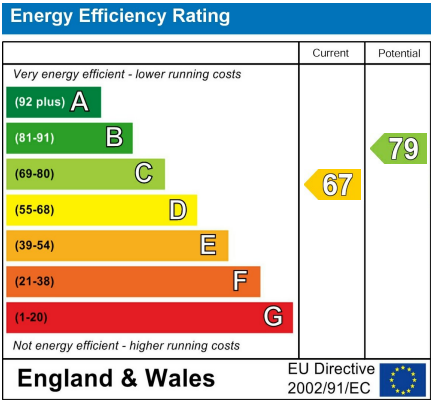
Floor Plan



Area Map



Energy Efficiency Graph



Directions

From our Sherburn In Elmet office turn left onto Low Street. Continue out of the village and on entering the village of South Milford take the second turning left onto the Harvesters Way. Turn left and The Haywain can be found immediately in front of you.