

Mike
Dobson



19 Low Street

South Milford, Leeds, LS25 5AR

£215,000

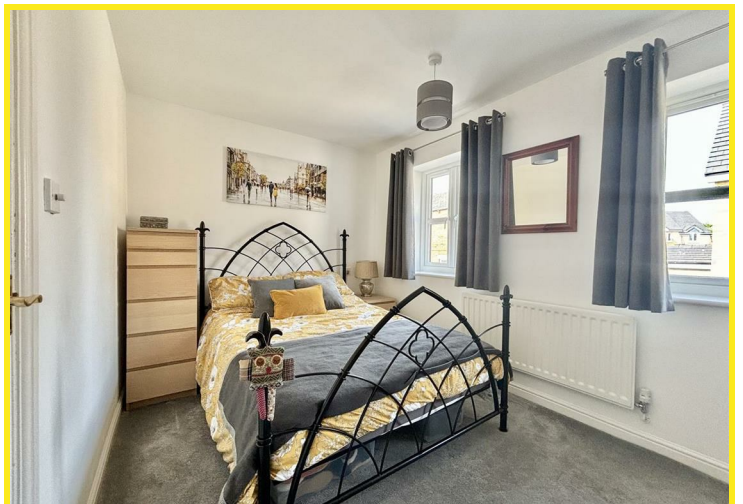
19 Low Street

Nestled within the charming village of South Milford, this semi-detached house exudes a delightful cottage feeling that is sure to captivate your heart. Boasting a tasteful interior, this property features one reception room, two cosy bedrooms, and a modern bathroom, offering a comfortable and inviting living space.

The highlight of this lovely home is the modern fitted kitchen, complete with a sleek four-ring induction hob and electric oven, perfect for whipping up delicious meals for family and friends. The main bedroom is adorned with fitted wardrobes, providing ample storage space while adding a touch of elegance to the room.

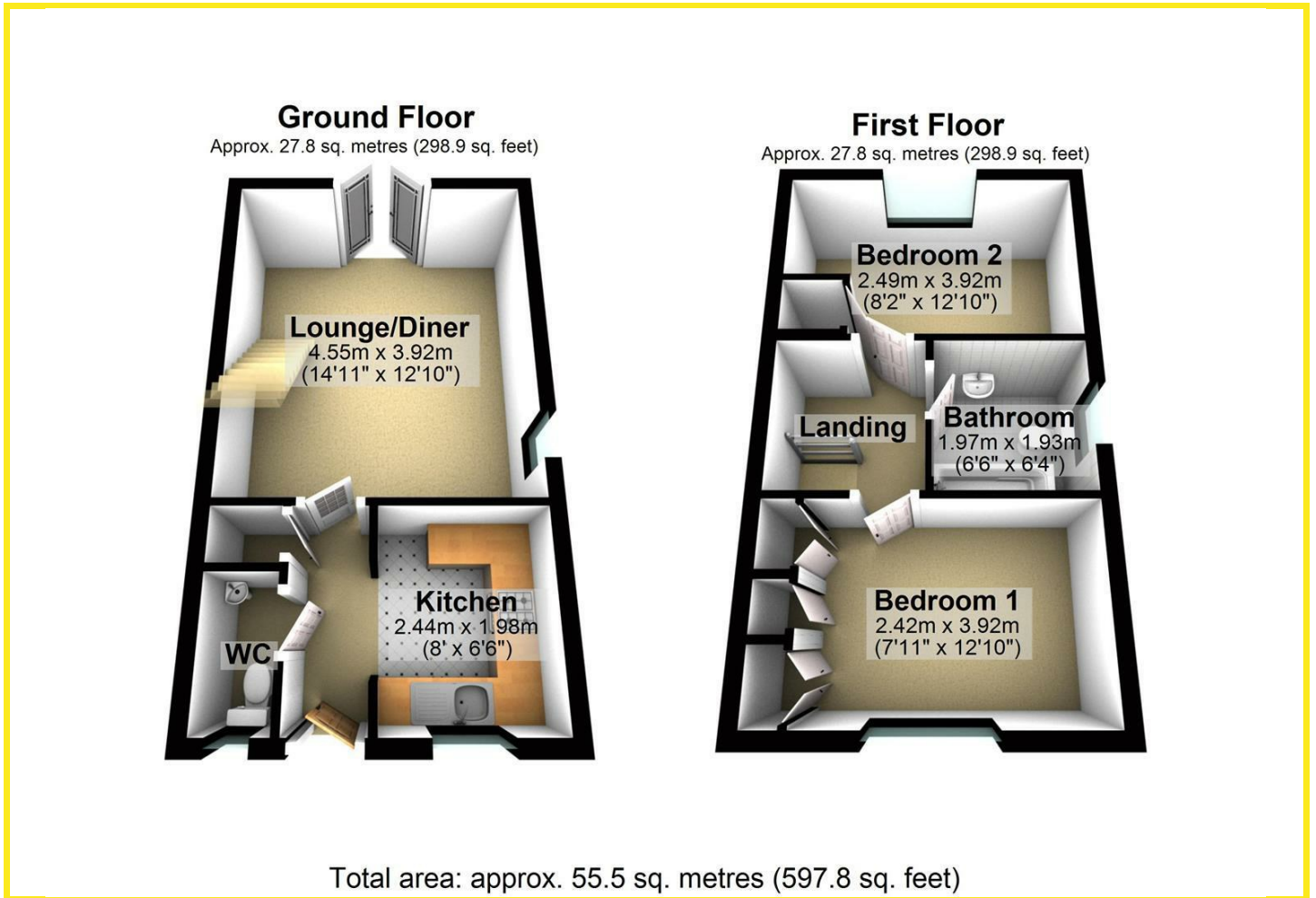
Outside, the property offers a parking space in front of a garage in the block to the rear. The lovely garden at the rear is a tranquil oasis, featuring a decked seating area where you can unwind after a long day, as well as a lush lawn perfect for outdoor activities.

From the moment you step inside, the beautifully presented interior welcomes you to a warm and inviting atmosphere, making you feel right at home. With its desirable location and charming features, this property is a true gem waiting to be discovered. Don't miss the opportunity to make this house your own and experience the best of village living in South Milford.





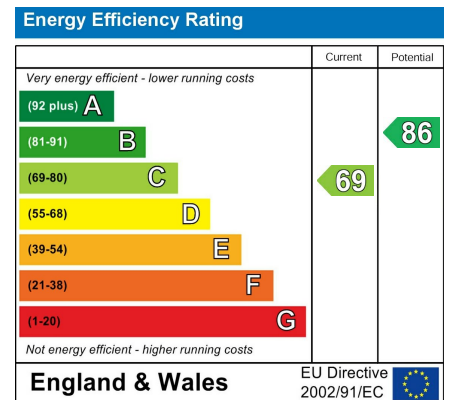
Floor Plan



Area Map



Energy Efficiency Graph



Directions

From our Sherburn in Elmet office turn left onto Low Street and proceed to the village of South Milford. The property can be found on the left hand side a little way after the Swan Public House.

These particulars, whilst believed to be accurate are set out as a general outline only for guidance and do not constitute any part of an offer or contract. Intending purchasers should not rely on them as statements of representation of fact, but must satisfy themselves by inspection or otherwise as to their accuracy. No person in this firm's employment has the authority to make or give any representation or warranty in respect of the property.

98 Wolsey Croft, Sherburn in Elmet, LS25 6DP
Tel: 01977 684258 Email: sherburn@mDOBSON.CO.UK <https://www.mDOBSON.CO.UK>