

LEASEHOLD - SHARE OF



Apartment (EPC Rating: C)

PELHAM ROAD LONDON SW19 1SU

Asking Price

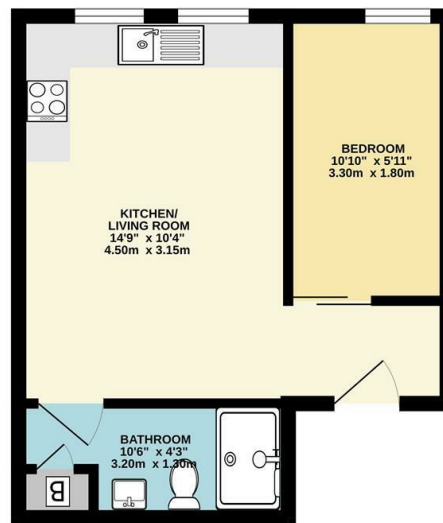
£350,000



1 Bedroom Apartment located in London

Saxon Kings welcome to the market this impressive refurbished one bedroom period conversion. Located in the highly sought after Ministers area of Wimbledon this is an ideal investment opportunity or base for commuters looking to walk to the town centre, train and tube. Having been thoughtfully designed this property features one bedroom, lounge with brand new fitted kitchen and a separate brand new shower room. Share of freehold. £0 ground rent, £0 fixed management charge, works to be agreed between owners and charged on an individual basis.

FIRST FLOOR
290 sq.ft. (27.0 sq.m.) approx.

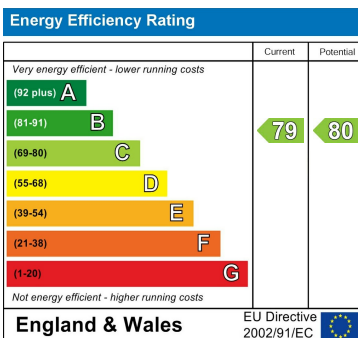


TOTAL FLOOR AREA: 290 sq.ft. (27.0 sq.m.) approx.
Whilst every attempt has been made to ensure the accuracy of the floorplan contained herein, measurements of doors, windows, rooms and any other items are approximate and no responsibility is taken for any error, omission or mis-statement. This plan is for illustrative purposes only and should be used as such by any prospective purchaser. The services, systems and appliances shown have not been tested and no guarantee is given as to their operability or efficiency can be given.
Made with Metropix 3.0.0.0

Council Tax Band

C

Energy Performance Graph



Call us on

020 8546 7771

info@saxonkings.co.uk

www.saxonkings.co.uk

Agents Note: Whilst every care has been taken to prepare these particulars, they are for guidance purposes only. All measurements are approximate and are for general guidance purposes only and whilst every care has been taken to ensure their accuracy, they should not be relied upon and potential buyers are advised to recheck the measurements.

