

Apartment

**ST GEORGES ROAD,
LONDON SE1 6ET**

PCM

£1,800 PCM

FEATURES

- Private courtyard garden
- One double bedroom
- Character conversion
- Ideal work from home layout
- Great location close to amenities
- 45 Square metres



**SAXON
KINGS**

1 Bedroom Apartment located in London

Call us on

020 8546 7771

info@saxonkings.co.uk

www.saxonkings.co.uk

Saxon Kings are delighted to bring to the market this one bedroom apartment with a private courtyard!

With plenty of character features this trendy ONE bedroom flat is not to be missed!

Bright and airy reception room, fitted kitchen, bathroom and bedroom with walk in wardrobe.

This property is ideally located, just a few minutes walk to Elephant & Castle tube and local shops!

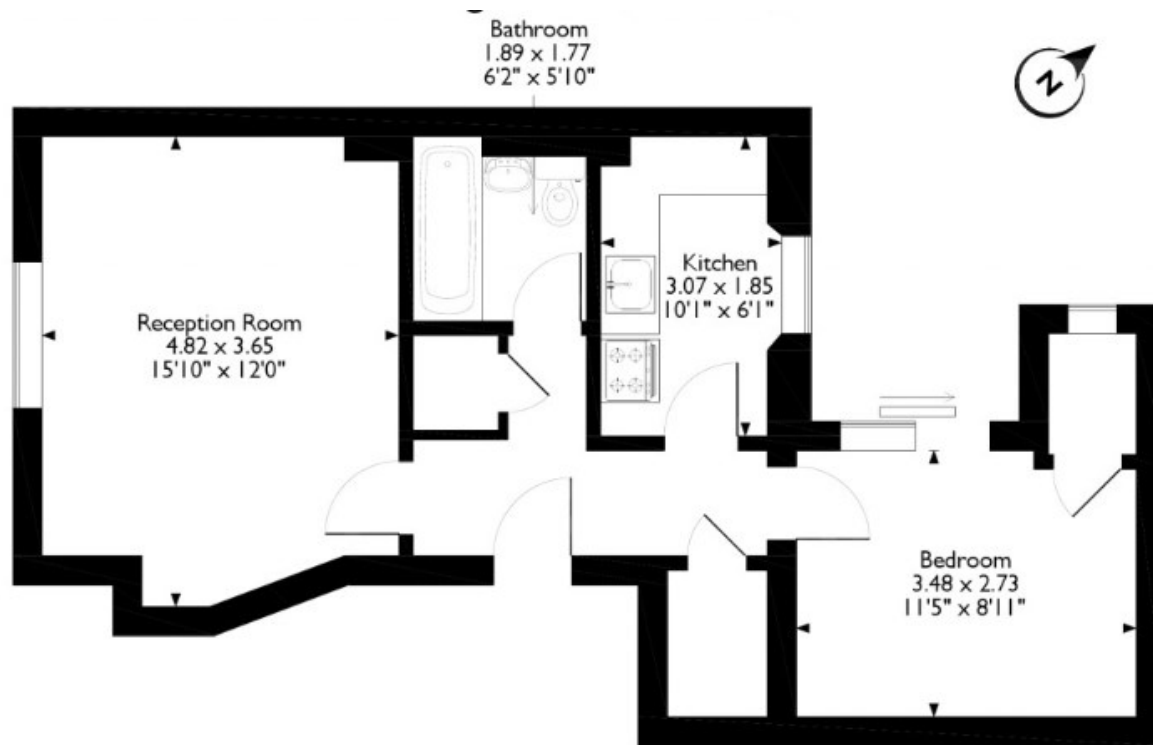
Council tax band C

Minimum tenancy term 6 months.

Deposit: £2076 (1 weeks holding to be deducted from the first months rent)

Council Tax Band

C



Ground Floor

Energy Efficiency Rating		
	Current	Potential
Very energy efficient - lower running costs		
(92 plus) A		
(81-91) B		
(69-80) C		
(55-68) D	67	77
(39-54) E		
(21-38) F		
(1-20) G		
Not energy efficient - higher running costs		
England & Wales		
EU Directive 2002/91/EC		

Agents Note: Whilst every care has been taken to prepare these particulars, they are for guidance purposes only. All measurements are approximate and are for general guidance purposes only and whilst every care has been taken to ensure their accuracy, they should not be relied upon and potential buyers are advised to recheck the measurements.

Please note that the location of doors, windows and other items are approximate and this floorplan is to be used for illustrative purposes only. Unauthorized reproduction is prohibited.

