



Room

COTHERSTONE, EPSOM KT19 9EF

PCM

£695 PCM

FEATURES

- Furnished Double bedroom
- Bathroom & additional Shower room
- Great communal areas
- High Spec finish throughout
- Rear garden
- Walk to local shops and station



1 Bedroom Room located in Epsom

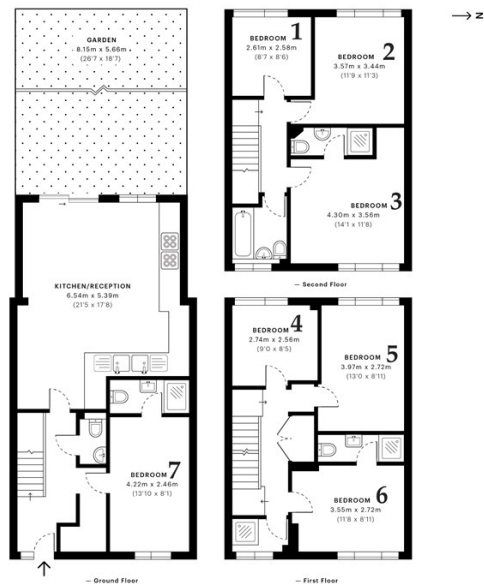
Call us on
020 8546 7771

info@saxonkings.co.uk
www.saxonkings.co.uk

Rent includes utility bills and council tax! Luxury Furnished Double bedroom.
For single occupancy
House share with 6 others. Walk to Ewell West Station and local shops. Great communal living space and modern kitchen/diner. Rarely available these rooms go fast! Rear garden & parking.
CTAX band: D.12 month term.
Deposit: £801
Holding fee £160 will be deducted from the first months rent.

Council Tax Band
D

VESTA	Cotherstone, KT19	GROSS INTERNAL AREA 141.1 Sqm / 1519.0 Sqft
CAPTURE DATE 09/08/2019	LASER SCAN POINTS 61,939,593	



Energy Efficiency Rating		
	Current	Potential
Very energy efficient - lower running costs		
(92 plus) A		87
(81-91) B		
(69-80) C	70	
(55-68) D		
(39-54) E		
(21-38) F		
(1-20) G		
Not energy efficient - higher running costs		
England & Wales	EU Directive 2002/91/EC	

Agents Note: Whilst every care has been taken to prepare these particulars, they are for guidance purposes only. All measurements are approximate and are for general guidance purposes only and whilst every care has been taken to ensure their accuracy, they should not be relied upon and potential buyers are advised to recheck the measurements.

GROSS INTERNAL AREA 141.1 Sqm / 1519.0 Sqft	NET AREA (INTERNAL) 127.1 Sqm / 1367.7 Sqft	EXTERNAL STRUCTURAL FEATURES 0.0 Sqm / 0.0 Sqft	RESTRICTED HEAD HEIGHT 0.0 Sqm / 0.0 Sqft
Spec floor plans are produced in accordance with the Royal Institution of Chartered Surveyors' Property Measurement Standards. Plans and gardens are illustrative only and are excluded from all area calculations. Due to rounding, numbers may not add up precisely.	SP43 30 RESIDENTIAL 135.1 Sqm / 1454.3 Sqft	SP43 30 RESIDENTIAL 137.6 Sqm / 1376.3 Sqft	SP43 30 RESIDENTIAL 137.6 Sqm / 1376.3 Sqft

