

FREEHOLD



House - Semi-Detached (EPC Rating: D)

ELM ROAD KINGSTON KT2 6HY

Asking Price

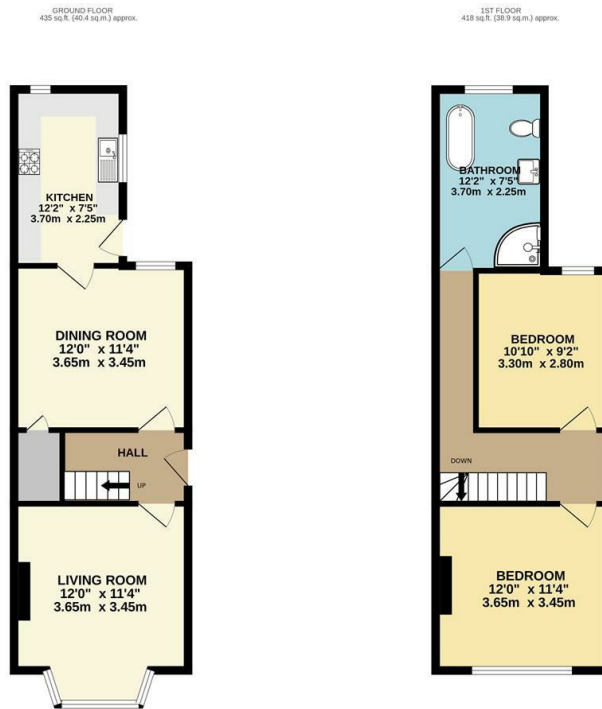
£700,000



2 Bedroom House - Semi-Detached located in Kingston

Saxon Kings are delighted to present this rarely available and beautifully characterful two double bedroom semi-detached period home, perfectly positioned on the ever-popular Elm Road in North Kingston. Bursting with original charm and offering fantastic potential to extend (STPP), this lovely property is ideal for those seeking a timeless home with room to grow. The generous accommodation includes a welcoming lounge with feature fireplace, a separate dining room, a well-fitted kitchen, and two spacious double bedrooms. Upstairs, you'll also find a large family bathroom, all bathed in natural light.

Retaining delightful original features throughout and enhanced by double glazing, this home also boasts well-maintained front and rear gardens. Just a short stroll from the breath-taking open spaces of Richmond Park, and within easy reach of local schools, transport links and Kingston's vibrant town centre, this is a home not to be missed. Offered to the market with no onward chain, an early viewing is highly recommended.

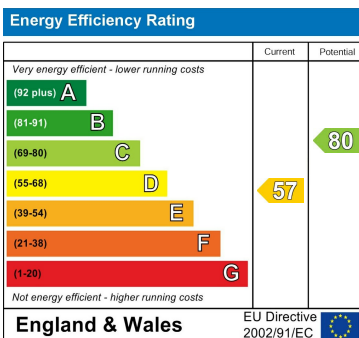


TOTAL FLOOR AREA: 853 sq.ft. (79.3 sq.m.) approx.
While every attempt has been made to ensure the accuracy of the floorplans contained here, measurements of floors, windows, doors and any other items are approximate and no responsibility is taken for any error, omission or mis-statement. This plan is for illustrative purposes only and should be used as such by any prospective purchaser. The services, systems and specifications shown have not been tested and no guarantee as to their availability or efficiency can be given. Made with Metropix C5023

Council Tax Band

D

Energy Performance Graph



Call us on

020 8546 7771

info@saxonkings.co.uk

www.saxonkings.co.uk

Agents Note: Whilst every care has been taken to prepare these particulars, they are for guidance purposes only. All measurements are approximate and are for general guidance purposes only and whilst every care has been taken to ensure their accuracy, they should not be relied upon and potential buyers are advised to recheck the measurements.

