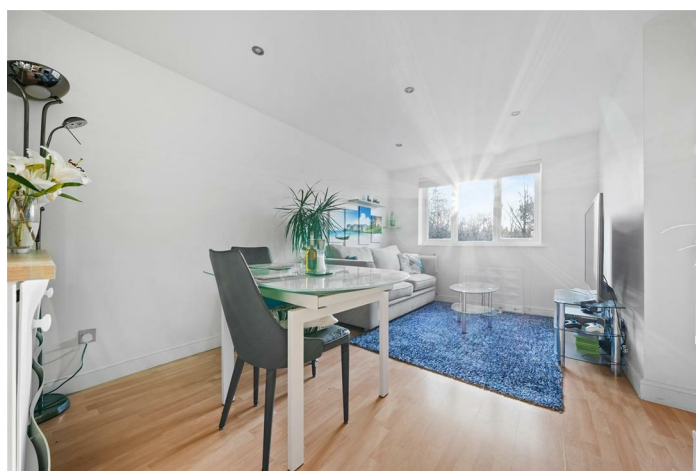


LEASEHOLD



Apartment (EPC Rating: C)

# PERCY GARDENS WORCESTER PARK KT4 7SB

Asking Price

£250,000



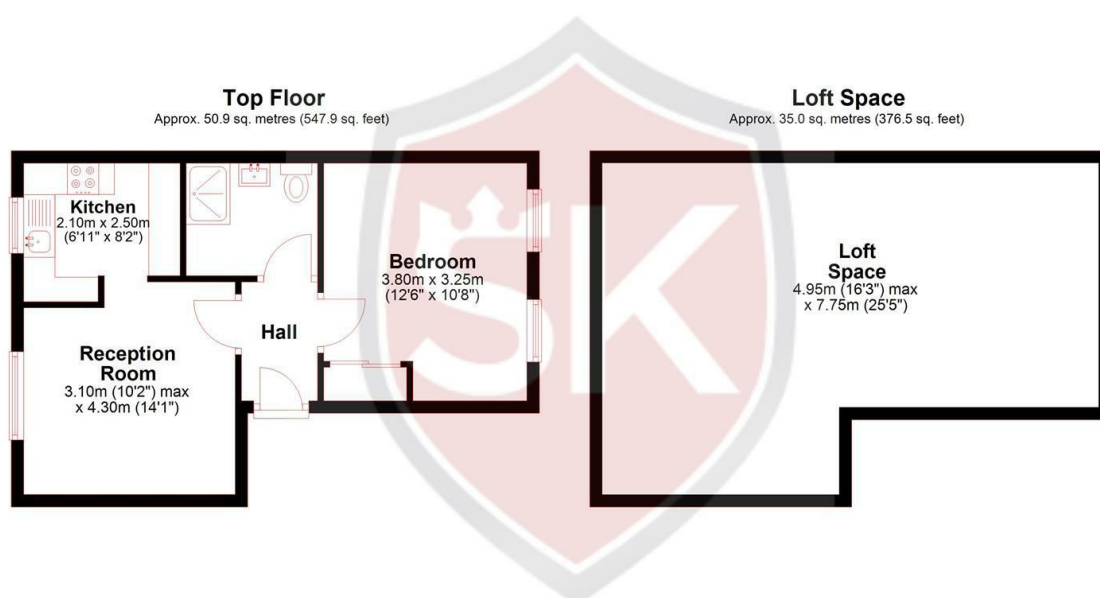
# 1 Bedroom Apartment located in Worcester Park

Conveniently located for access to Malden Manor station (zone 4) yet tucked away in a cul-de-sac location, this beautifully presented one bedroom apartment is offered to the market with no onward chain. Situated on the top floor of Onyx House with stunning views of the Hogsmill Woodlands, the building itself underwent major external refurbishment in 2021 and we believe is by far the smartest building in the development.

The apartment has been tastefully updated by the current owners and comprises modern fitted kitchen with induction hob, bright lounge / diner, spacious bedroom with built in mirrored wardrobes and a modern shower room boasting a rain shower and a heated towel rail with programmable timer. The Megaflor hot water system ensures you can enjoy hot, high-pressure showers.

Further benefits include a security entryphone system, residents parking and a well-insulated boarded loft easily accessible via telescopic ladder. Ideal for storing suitcases, bulky items, seasonal clothes/bedding etc this useful storage space is a huge benefit.

Contact Saxon Kings on 020 8546 7771 to book a viewing and hear more about this impressive apartment and truly appreciate the quality and space on offer.

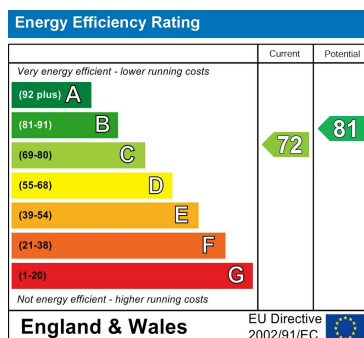


Total area: approx. 85.9 sq. metres (924.4 sq. feet)

Council Tax Band

C

Energy Performance Graph



Call us on

020 8546 7771

[info@saxonkings.co.uk](mailto:info@saxonkings.co.uk)

[www.saxonkings.co.uk](http://www.saxonkings.co.uk)

Agents Note: Whilst every care has been taken to prepare these particulars, they are for guidance purposes only. All measurements are approximate and are for general guidance purposes only and whilst every care has been taken to ensure their accuracy, they should not be relied upon and potential buyers are advised to recheck the measurements.

