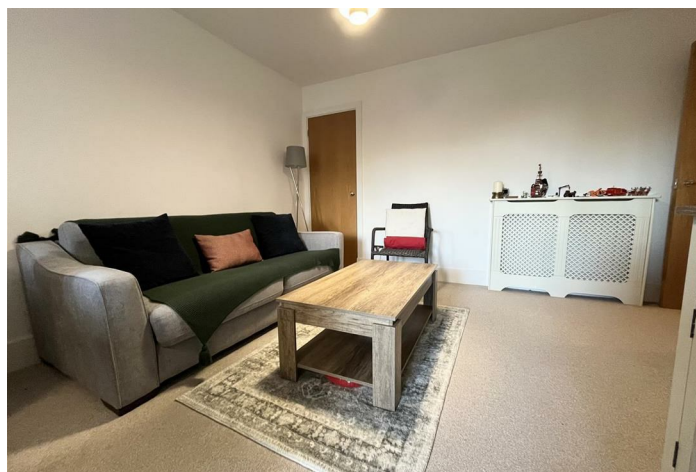


LEASEHOLD - SHARE OF
FREEHOLD



Apartment (EPC Rating: C)

WADBROOK STREET KINGSTON KT1 1HS

Offers In The Region Of

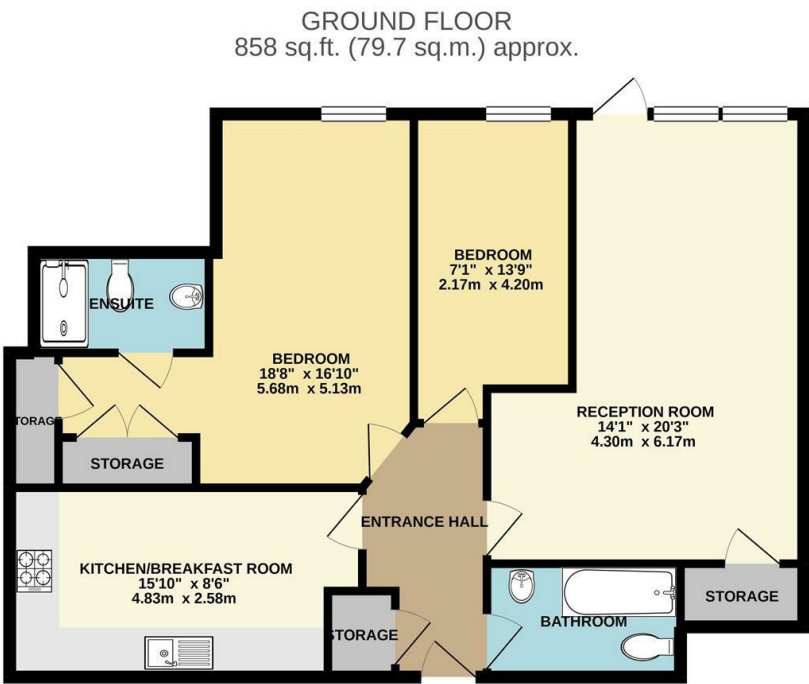
£575,000



2 Bedroom Apartment located in Kingston

Riverside living with direct access onto patio terrace! This rarely available ground floor apartment benefits from 24 hour concierge, residents gym and a fantastic location for all the amenities Kingston has to offer. Two double bedrooms, spacious lounge, modern kitchen, en suite and main bathroom. Further benefits include underground parking. Share of Freehold (lease remaining 975 years), Service Charge £5090.68 P/A, Ground Rent £0P/A.

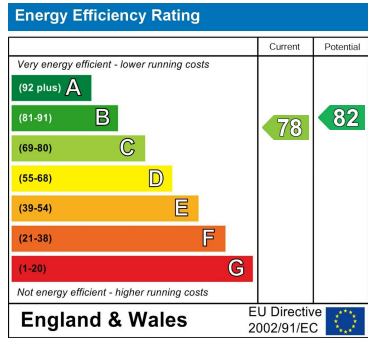
We also offer an ARLA licensed professional Lettings and Management Service. If you are considering letting your current property in order to purchase this, are looking at buy to let or would like a free review of your current portfolio then please ask to speak to our Client Manager on 020 8546 7771.



TOTAL FLOOR AREA: 858 sq.ft. (79.7 sq.m.) approx.
Whilst every attempt has been made to ensure the accuracy of the floorplan contained herein, measurements of doors, windows, rooms and any other items are approximate and no responsibility is taken for any error, omission or misstatement. This plan is for illustrative purposes only and should be used as such by any prospective purchaser. The services, systems and appliances shown have not been tested and no guarantee as to their operability or efficiency can be given.
Made with Metropix (2021)

Council Tax Band
F
Energy Performance Graph

Call us on
020 8546 7771
info@saxonkings.co.uk
www.saxonkings.co.uk



Agents Note: Whilst every care has been taken to prepare these particulars, they are for guidance purposes only. All measurements are approximate and are for general guidance purposes only and whilst every care has been taken to ensure their accuracy, they should not be relied upon and potential buyers are advised to recheck the measurements.

