

LEASEHOLD - SHARE OF
FREEHOLD



Apartment (EPC Rating: D)

LAMBOURN GROVE KINGSTON KT1 3SG

Asking Price

£395,000



2 Bedroom Apartment located in Kingston

Newly refurbished! Saxon Kings are delighted to present this TWO bedroom top floor apartment which the current owner has recently refurbished throughout. Situated within walking distance of Kingston Hospital, Norbiton train station and Richmond Park this is an ideal location for first time buyers and investors alike. Additional benefits include a garage and share of the freehold. Council tax band C, service charge £1365p/a.

Pinkerton Court, Lambourn Grove KT1 3SG

Approximate Gross Internal Area = 61.03 sq m / 657 sq ft
Total = 61.03 sq m / 657 sq ft

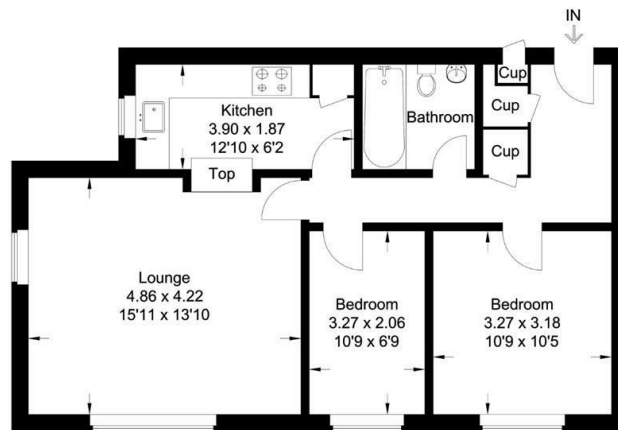
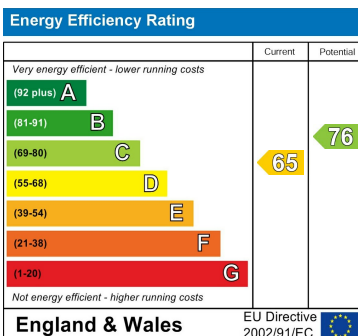


Illustration for identification purposes only, measurements are approximate not to scale. Floorplan by: www.epc4u.info

Council Tax Band

C

Energy Performance Graph



Call us on

020 8546 7771

info@saxonkings.co.uk

www.saxonkings.co.uk

Agents Note: Whilst every care has been taken to prepare these particulars, they are for guidance purposes only. All measurements are approximate and are for general guidance purposes only and whilst every care has been taken to ensure their accuracy, they should not be relied upon and potential buyers are advised to recheck the measurements.

