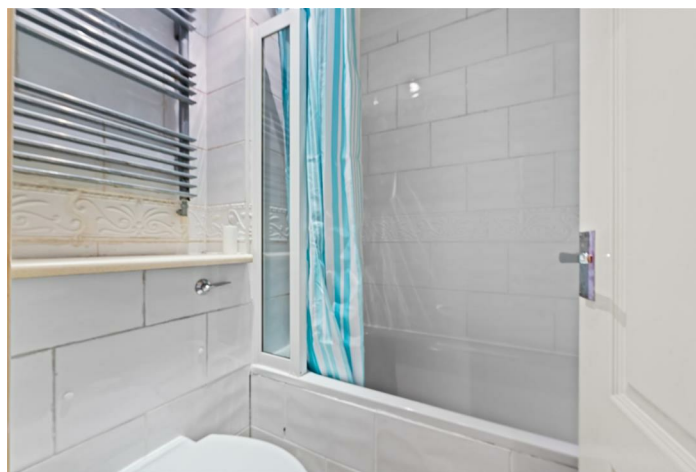
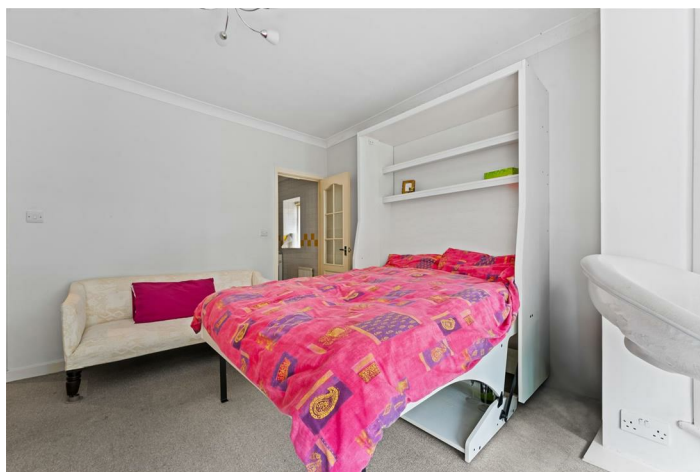


LEASEHOLD



Studio (EPC Rating: C)

WORPLE ROAD LONDON SW19 4HZ

Asking Price

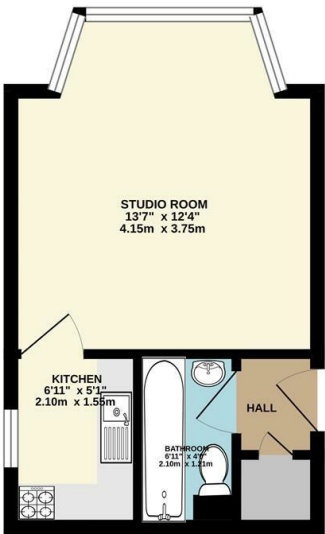
£249,950



1 Bedroom Studio located in London

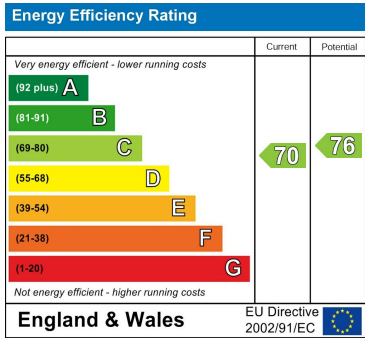
A well presented studio apartment located just a short walk from Wimbledon train and tube station. A great opportunity for an investor or first time buyer looking for easy access to a choice of excellent local shopping, restaurants, theatres, bars and leisure facilities. This raised ground floor studio is situated in an impressive brick building and benefits from communal gardens to the rear of the property. Further benefits include no onward chain and gas central heating.

GROUND FLOOR
238 sq.ft. (22.1 sq.m.) approx.



TOTAL FLOOR AREA: 238 sq.ft. (22.1 sq.m.) approx.
Whilst every attempt has been made to ensure the accuracy of the floorplan contained herein, measurements of doors, windows, rooms and any other items are approximate and no responsibility is taken for any error, omission or mis-statement. This plan is for illustrative purposes only and should be used as such by any prospective purchaser. The services, systems and appliances shown have not been tested and no guarantee is given to their operability or efficiency can be given. Made with Metropix C2000

Council Tax Band
B
 Energy Performance Graph



Call us on
020 8546 7771
info@saxonkings.co.uk
www.saxonkings.co.uk

Agents Note: Whilst every care has been taken to prepare these particulars, they are for guidance purposes only. All measurements are approximate and are for general guidance purposes only and whilst every care has been taken to ensure their accuracy, they should not be relied upon and potential buyers are advised to recheck the measurements.

