



Room

COTHERSTONE, EPSOM KT19 9EF

PCM

£695 PCM

FEATURES

- Furnished Double bedroom
- Bathroom & additional Shower room
- Great communal areas
- High Spec finish throughout
- Rear garden
- Walk to local shops and station

 1  0  0  C



1 Bedroom Room located in Epsom

Call us on
020 8330 1777

info@saxonkings.co.uk
www.saxonkings.co.uk

Council Tax Band
D

Rent includes utility bills and council tax! Luxury Furnished Double bedroom.

For single occupancy

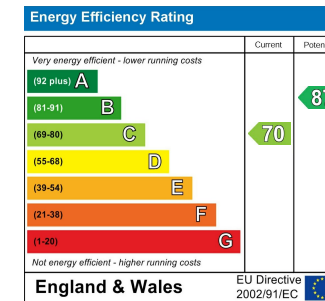
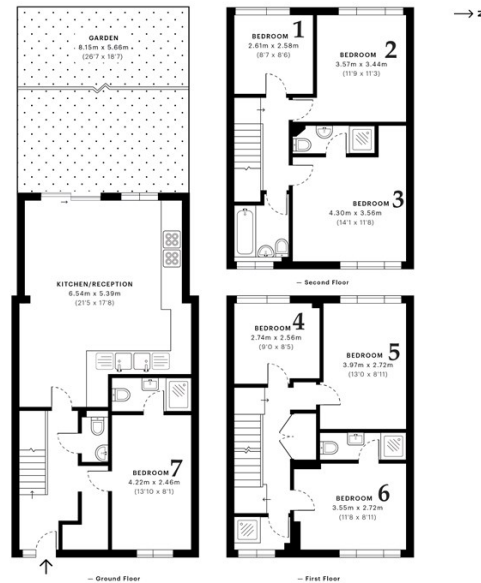
House share with 6 others. Walk to Ewell West Station and local shops. Great communal living space and modern kitchen/diner. Rarely available these rooms go fast! Rear garden & parking.

CTAX band: D.12 month term.

Deposit: £801

Holding fee £160 will be deducted from the first months rent.

VESTA	Cotherstone, KT19		GROSS INTERNAL AREA 141.1 Sqm / 1519.0 Sqft
	CAPTURE DATE 09/08/2019	LASER SCAN POINTS 61,939,593	



Agents Note: Whilst every care has been taken to prepare these particulars, they are for guidance purposes only. All measurements are approximate and are for general guidance purposes only and whilst every care has been taken to ensure their accuracy, they should not be relied upon and potential buyers are advised to recheck the measurements.

GROSS INTERNAL AREA 141.1 Sqm / 1519.0 Sqft	NET AREA (INTERNAL EXCLUDING COMMON AREAS) 127.1 Sqm / 1367.7 Sqft	EXTERNAL STRUCTURAL FEATURES 3.0m x 0.0m veranda etc. 0.0 Sqm / 0.0 Sqft	RESTRICTED HEAD HEIGHT Rooms with restricted head height 0.0 Sqm / 0.0 Sqft
spec	Spec floor plans are produced in accordance with the Royal Institution of Chartered Surveyors' Property Measurement Standards. Plans and gardens are illustrative only and are excluded from all area calculations. Due to rounding, numbers may not add up precisely.	IPMS 3B RESIDENTIAL 135.1 Sqm / 1454.3 Sqft	IPMS 3C RESIDENTIAL 137.6 Sqm / 1476.3 Sqft
RICS		SPCC ID 56480336b67d899040739216	

