

FREEHOLD



House - End Terrace (EPC Rating: D)

DOUGLAS ROAD SURREY KT6 7SA

Offers Over

£795,999



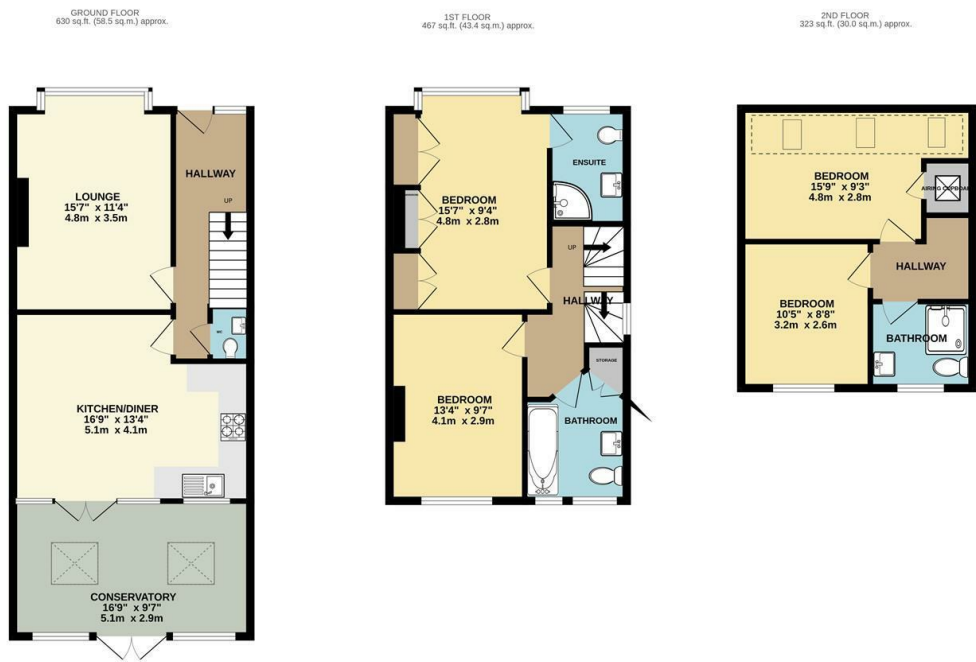
4 Bedroom House - End Terrace located in Surrey

Saxon Kings are delighted to bring to the market this beautifully presented 4 bedroom family home. This generously sized home is spread over three floors and is located on a popular residential road.

The ground floor comprises entrance hallway, front reception room, open plan kitchen /diner, WC with French doors leading to the large well maintained garden. The first floor comprises two double bedrooms with one en-suite plus additional bathroom. The second floor comprises two further double bedrooms and a shower room.

Further benefits include off road parking and a landscaped rear garden. The location offers easy access to the A3, both Surbiton and Tolworth mainline train stations and bus services.

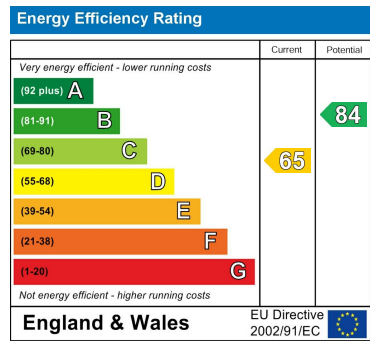
Walking distance to several primary and secondary schools, rated 'Good' or 'Outstanding' via Ofsted. There is also an array of shops, cafes, restaurants, parks and playgrounds close by!



DOUGLAS ROAD, SURBITON, KT6 7SA
TOTAL FLOOR AREA: 1420 sq ft. (132.0 sq.m.) approx.
Whilst every attempt has been made to ensure the accuracy of the floorplan contained herein, measurements of doors, windows, rooms and any other items are approximate and no responsibility is taken for any error, omission or mis-statement. This plan is for illustrative purposes only and should be used as such by any prospective purchaser. The services, systems and appliances shown have not been tested and no guarantee as to their operability or efficiency can be given.
Made with Metropix 5.0024

Council Tax Band
E
Energy Performance Graph

Call us on
020 8546 7771
info@saxonkings.co.uk
www.saxonkings.co.uk



Agents Note: Whilst every care has been taken to prepare these particulars, they are for guidance purposes only. All measurements are approximate and are for general guidance purposes only and whilst every care has been taken to ensure their accuracy, they should not be relied upon and potential buyers are advised to recheck the measurements.

