



House - Terraced (EPC Rating: D)

# COTHERSTONE, EPSOM KT19 9EF

Offers Over

# £600,000



# 7 Bedroom House - Terraced located in Epsom

Great Investment Opportunity!

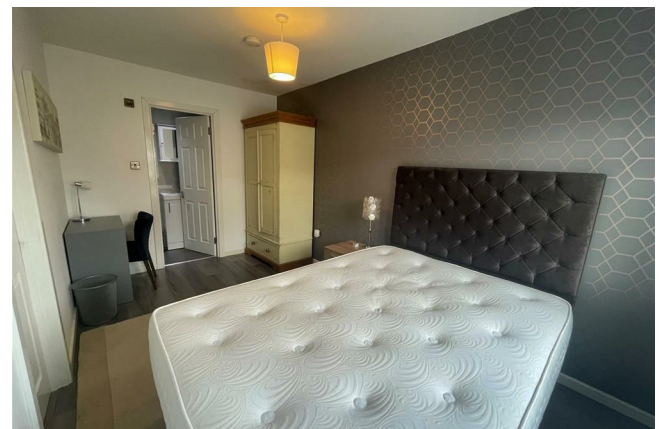
Saxon Kings are excited to bring to the market this 7 bedroom terraced house in Epsom!

This HMO property is spread over three floors and comprises an open plan modern kitchen / dining / living room. All rooms are currently tenanted and the overall property income is currently over £5200 per month.

Of the 7 double bedroom, 3 are en-suite, This property also has a full bathroom, a shower room and downstairs WC. Additional benefits include a private rear garden and driveway for 2 cars.

The property was completely renovated in 2019 and has been kept to a high standard since the renovations.

For more information on individual room rental figures and contract lengths please contact Saxon Kings.



SAXON KINGS SALES | 135 KINGS ROAD, KINGSTON UPON THAMES, SURREY, KT2 5JE

VESTA

Cotherstone, KT19

CAPTURE DATE  
09/08/2019

LASER SCAN POINTS  
61,939,593

GROSS INTERNAL AREA  
141.1 Sqm / 1519.0 Sqft



- GROSS INTERNAL AREA: The footprint of the property: 141.1 Sqm / 1519.0 Sqft
- NET AREA (INTERNAL): Excludes walls and external features: 127.1 Sqm / 1367.7 Sqft
- EXTERNAL STRUCTURAL FEATURES: Balconies, terraces, verandas etc.: 0.0 Sqm / 0.0 Sqft
- RESTRICTED HEAD HEIGHT: Limited use area under 1.8m: 0.0 Sqm / 0.0 Sqft



Spec floor plans are produced in accordance with the Royal Institution of Chartered Surveyors' Property Measurement Standards. Plots and gardens are illustrative only and are excluded from all area calculations. Due to rounding, numbers may not add up precisely.

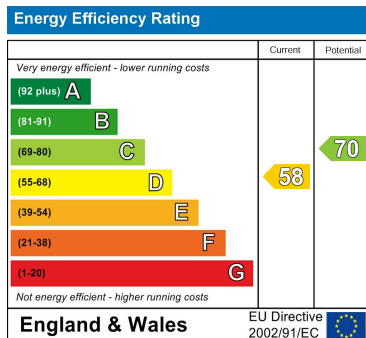
IPMS 2B RESIDENTIAL  
135.1 Sqm / 1454.3 Sqft  
IPMS 2C RESIDENTIAL  
127.6 Sqm / 1373.3 Sqft

SPEC ID:  
5d48035eb67d890a10799216

Council Tax Band

D

Energy Performance Graph



Call us on

020 8546 7771

info@saxonkings.co.uk

www.saxonkings.co.uk

Agents Note: Whilst every care has been taken to prepare these particulars, they are for guidance purposes only. All measurements are approximate and are for general guidance purposes only and whilst every care has been taken to ensure their accuracy, they should not be relied upon and potential buyers are advised to recheck the measurements.

