



Busy Bees Estate Agents Ltd



LAND-RESIDENTIAL PROPERTY-INVESTMENT PROJECTS

Head Office - Bogaz, Iskele, North Cyprus, Telephone 0090 533 8769166

Kyrenia Branch – Karaoglanoglu, Telephone 0090 533 8511143

Email: info@busybeesestateagents-cyprus.com www.busybeesestateagents-cyprus.com

NEWLY REFURBISHED 3 BED/3 BATH VILLA WITH SEA VIEWS ON A FANTASTIC COMPLEX, BAHCELI



£199,950

- | | |
|--|--|
| <ul style="list-style-type: none">• Individual title deed in owner's name• 3 bedrooms, master with en suite and luxury terrace• Approx 135m2 villa, plot size approx. 600m2• Second bedroom with shower only en suite• Cloak room and downstairs guest/family bathroom• Being Sold fully furnished• Private drive• Short Walk to Coast And The Beach• On site facilities including communal pool and gym | <ul style="list-style-type: none">• Within approx. 5 minute walking distance to the shoreline• Closest restaurant approx. 5 minute walk• Within approx 7 minutes' drive from Esentepe beach• Approx 10 minute drive to Korenium Golf and Beach club• Short Drive to Restaurants & Bars• Approx 30 Minute Drive to Kyrenia Town.• Approx 1 hour Drive to Ercan Airport.• Approx 90-minute drive from Larnaca airport |
|--|--|

We are happy to present this fantastic newly refurbished 3 bedroom villa. Sitting privately on the peaceful development of Crystal Bay which is known for its proximity to the Mediterranean shoreline and on site amenities this wonderful home offers a great living experience. It comprises an open plan diner and lounge which looks directly onto the low maintenance garden and luxury terrace, along with 3 bedrooms, one located on the basement floor with a fully equipped bathrooms, the second located on the main floor along with a private shower suite and a separate cloakroom while the master living up to its expectations sits privately on the first floor. Here you will find a spacious en suite and access to a beautiful sea view terrace providing the perfect place to relax and unwind while watching the sun set over the blue sea.

The area provides both day and night entertainment. Soak up the sun during the day beside one of the luxury communal pools, and then finish the night off with a lovely evening in the local restaurant, which is famous for its nightlife entertainment and tasty cuisine.

Thanks to its fabulous location and design this property offers a great opportunity for those seeking a permanent home, holiday home or even a buy to let investment. Please contact us to find out more on this great opportunity. **Ref: HP3277 KF**

Rental Opportunity

Short term rental Approx £500 weekly

Long-term rent approx. £600 per month

The property

Lounge/Kitchen - 22'8" x 12'8" (6.90m² x 3.8m²)

A lovely bright open-plan lounge and kitchen with air conditioning and French windows leading to shaded terrace with views of the crystal blue sea ahead.

Master bedroom 7'7" x 9'10" (2.31m² x 2.98m²)

Master bedroom with fitted wardrobes, air conditioning, French windows to balcony and en-suite bathroom

En-suite - 9'5" x 6'8" (2.87m² x 2.03m²)

Fitted with a wash basin, WC and shower

Bedroom 2 - 9'5" x 9'1" (2.8m² x 2.7m²)

En-suite with shower only 3'2" x 2'8" (1m² x 0.8m²)

A spacious room, located on the main floor with fitted wardrobes, air conditioning and an en-suite with a shower.

Cloak room 3'2" x 2'8" (1m² x 0.8m²)

W/C and wash basin located on the main floor

Bedroom 3 - 9'4" x 5'2" (2.84m² x 1.57m²)

The third bedroom, located on the basement floor stays perfectly cool throughout the summer season and warm in the winter season. spacious and air-conditioned with wardrobes.

Family bathroom 7'4" x 6'7" (2.2m² x 2.0m²)

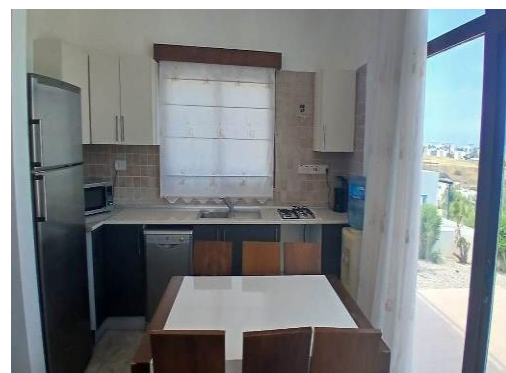
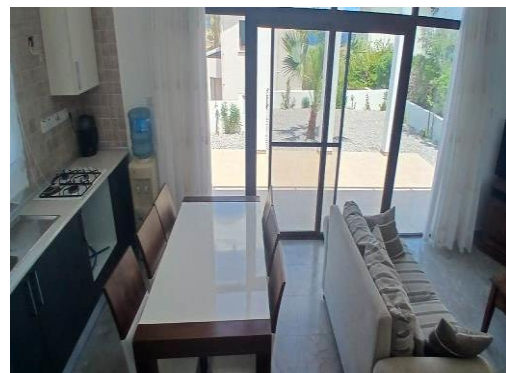
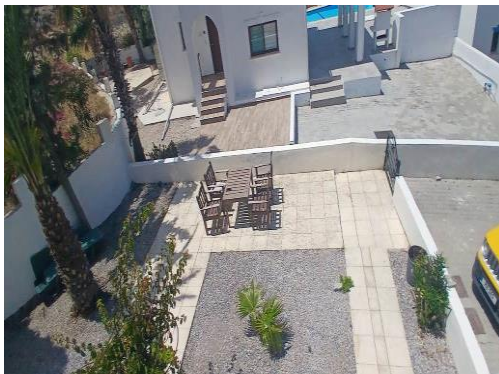
Fitted with Wash basin, WC and shower.

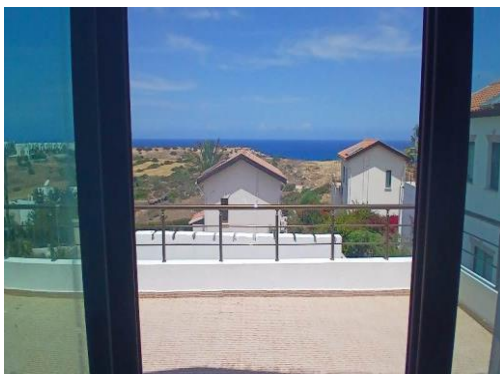
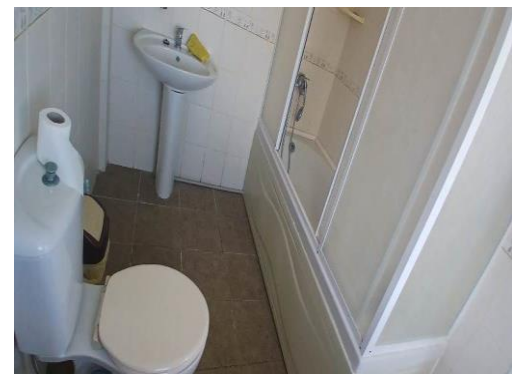
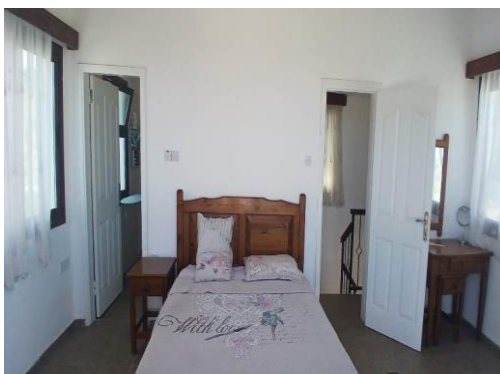
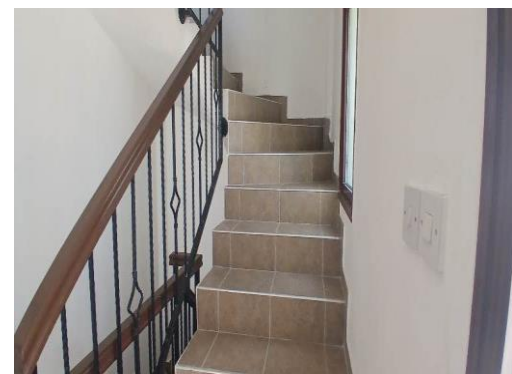
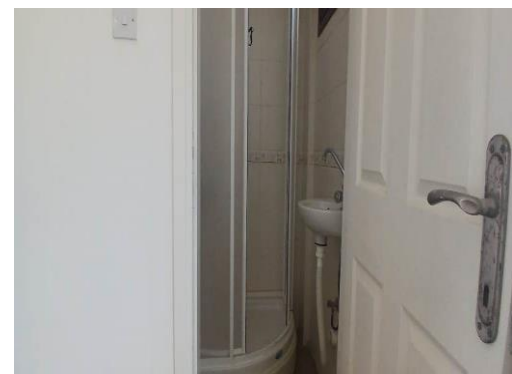
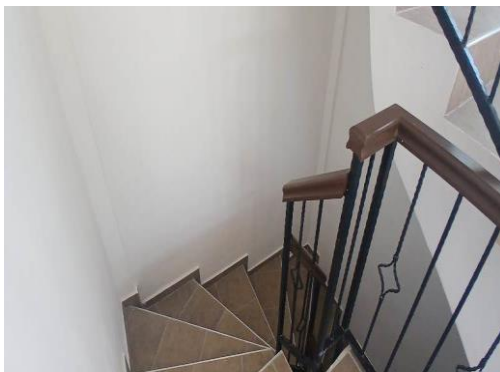
Outside

- Private low maintenance landscaped gardens with various trees & plants
- Paved driveway
- Outdoor seating areas
- Garden terrace
- Traditional stone boundary walls

Maintenance £65 per month

The Gallery:







The Area



Bahceli is only a few minutes' drive from the new North Cyprus, Korineum Golf Course, and is situated close to the peaceful and quaint Cypriot village of Esentepe where you will find grocers shops, bars and restaurants. Living near Esentepe one gets the best of all worlds; easy access to the resort town of Kyrenia, easy access to both Ercan airport, and the Metehan border crossing for links to south Cyprus. All this from a location that benefits from some of the very best Cyprus views, and the stunning Mediterranean climate. Furthermore, back from the village you have pine forests, olive groves and the gentle foot hills of the Besparmak mountain range are accessible and great for wintertime walks.

Amenities and popular attractions:

- Esentepe village and belediyesi: Bank, pharmacy, supermarket.
- Restaurants include the Old Barn, Ramzi restaurant, Cengiz restaurant, Tina's coffee shop and more.
- Kantara castle
- Esentepe sandy beach and beach restaurant
- Civil Sunvarmi seaside pool and restaurant
- Korenium golf and beach club
- New Esentepe Sun Valley Marina
- Kantara castle
- Elexus hotel and casino
- Miniature meuseum
- Kyrenia Harbor and castle
- Kyrenia high street
- Incirli gypsum caves
- Alagadi / turtle beach where you can watch the baby turtle being released around July and September
- St Hilarion Castle
- Bellabay
- Multiple other restaurants and cafes along the coastline

These particulars do not constitute any part of an offer or contract. None of the statements contained in these particulars are to be relied on as representations of fact. Any intending purchaser should satisfy themselves by inspection or otherwise as to the correctness of the statements contained in these particulars. Busy Bees Estate Agents nor any person in their employment or representing them, has any authority to make or give any representation or warranty whatsoever in relation to this property or transaction.

Busy Bees Estate Agents Ltd are licensed to trade in estate agency and real estate within the TRNC