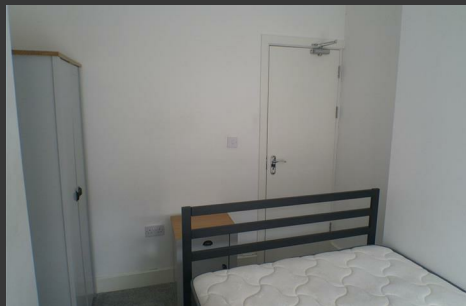




15 Salisbury Road, Wellingborough NN8 1QF
£435 PCM

SmartaMove are pleased to offer to let this first floor double bedroom in a five bedroom HMO in a beautifully refurbished terrace property. The property is close to all local amenities and benefits from walking distance of the town centre and train station. The room comes fully furnished, free Wifi and TV as well as the use of two shower rooms and a fitted kitchen with appliances. The price is inclusive of all bills and a cleaner for communal areas. Viewings available now and move in available once referencing completed on 1st June. The deposit is £435 with a minimum 6 month tenancy. The EPC is D.



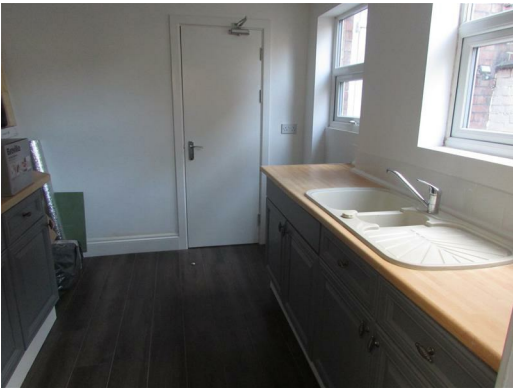
Call 01933 423 983

www.smartamove.co.uk



Like us on
Facebook

15 Salisbury Road, Wellingborough NN8 1QF



Energy Efficiency Rating		Current	Potential
Very energy efficient - lower running costs			
95-100	A		
81-95	B		
69-81	C		
55-69	D		
41-55	E		
27-41	F		
13-27	G		
Not energy efficient - higher running costs			
England & Wales		EU Directive 2002/91/EC	

Environmental Impact (CO ₂) Rating		Current	Potential
Very environmentally friendly - lower CO ₂ emissions			
95-100	A		
81-95	B		
69-81	C		
55-69	D		
41-55	E		
27-41	F		
13-27	G		
Not environmentally friendly - higher CO ₂ emissions			
England & Wales		EU Directive 2002/91/EC	

SmartaMove Ltd, 4 Burystead Place, Wellingborough, Northants, NN8 1AH

tel: 01933 423 983

email: info@smartamove.co.uk