



George Street, Wellingborough NN8 4RB

£129,995

- End of Terrace
- Modern Decor
- Ideal Investment
- Large Double Bedroom
- Spiral Staircase
- No Chain
- Town Centre Location
- Courtyard Garden



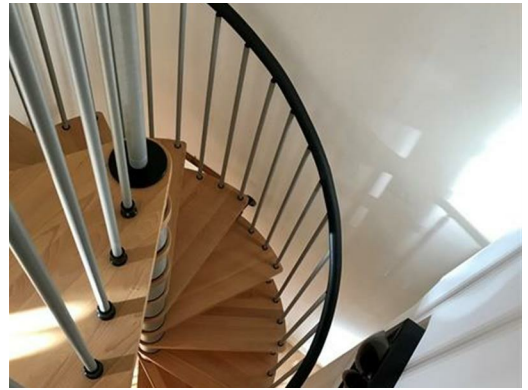
Call 01933 423 983

www.smartamove.co.uk

Like us on
Facebook

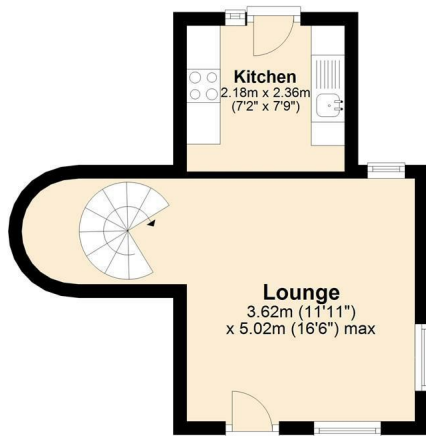
George Street, Wellingborough NN8 4RB

Smartamove are pleased to offer for sale this one bedroom end terrace which is an ideal buy to let or first time buy property close to the town centre. The property comprises of a lounge and kitchen to the ground floor with a spiral staircase leading to the first floor where there is a large double bedroom and bathroom. The property is light and modern and benefits from high ceilings, refitted kitchen and built in oven and hob, Upvc double glazing, gas radiator central heating, a courtyard garden and side access. Available to view now with no upper chain. Currently let at £650.00



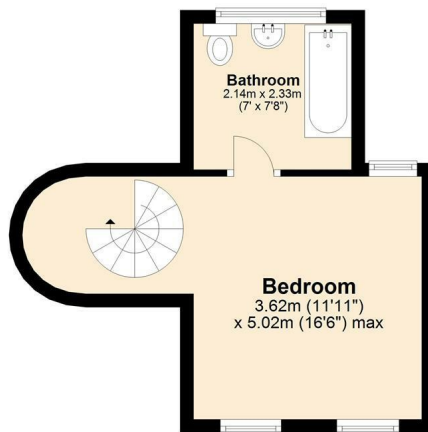
Ground Floor

Approx. 21.9 sq. metres (235.5 sq. feet)



First Floor

Approx. 22.4 sq. metres (241.6 sq. feet)



Total area: approx. 44.3 sq. metres (477.2 sq. feet)



Although SmartaMove Ltd believe these details to be a fair and accurate the description and measurements of the property and their accuracy cannot be guaranteed. They do not form part of any contract. Prospective buyers should satisfy themselves as to the property's suitability and make their own enquiries prior to any financial commitment. Only the fixtures, fittings and other items described in these details are included in the selling price. SmartaMove Ltd has not checked they are fit for purpose nor have we tested any of the services (gas, electricity and so on) mentioned.

Energy Efficiency Rating		Environmental Impact (CO ₂) Rating	
Current	Potential	Current	Potential
89	89	70	89
England & Wales EU Directive 2002/91/EC		England & Wales EU Directive 2002/91/EC	

SmartaMove Ltd, 4 Burystead Place, Wellingborough, Northants, NN8 1AH