



262 Green lane, Morden, Surrey, SM4 6SL
£2,000 pcm – Unfurnished



Tastefully Refurbished Three bedroom terraced house within few minutes walk to St Helier BR Station. Local shops & bus routes. Close to Morden Tube into London. 20 minute walk to Sutton Town Centre. Few minutes walk to Parkland & Leisure centre.

Property features include * Newly fitted kitchen with appliances*Newly laid wood flooring to downstairs *Newly laid carpet to stairs & first floor *Refitted bathroom with overbath shower & screen*full double glazing*Gas central heating(combi boiler)*Pebbled rear garden*off road parking for two cars

CANOPIED ENTRANCE- Tiled floor

Double glazed part frosted front door

ENTRANCE HALLWAY:- Double radiator, storage cupboard housing central heating boiler & fuse board & electric meter, recess with single freezer, smoke alarm, Newly fitted herringbone style wood flooring.

LOUNGE/ DINER (24'1 x 11'11) 7.34m x 3.63m

Double radiator, coved ceiling, newly fitted wood flooring, double glazed window to front elevation & double glazed window overlooking rear garden.



MODERN FITTED KITCHEN (9'10 x 5'7) 3m x 1.70m

A range of eye and low level units, integrated electric oven & hob with extractor hood above, single drainer stainless steel sink unit with mixer tap, fridge, washing machine, part tiled walls, ceramic tiled floor, smoke alarm, double glazed frosted door to Garden with double glazed side window.



STAIRS TO FIRST FLOOR LANDING:- Newly fitted grey carpet, access to loft space with pull down ladder.

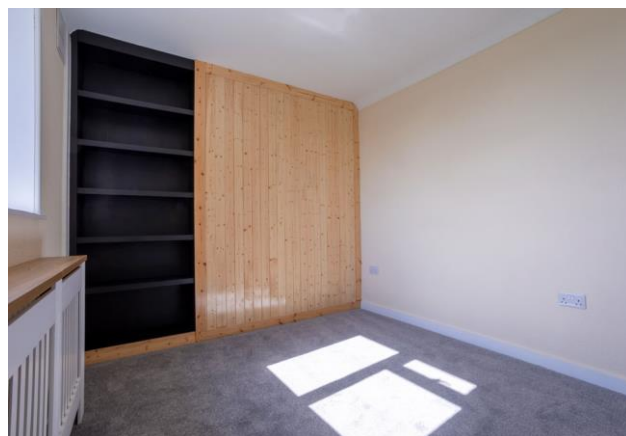
MASTER BEDROOM (13'4 x 11'1) 4.06m x 3.38m

Encased radiator, coved ceiling, cast iron fire place, double glazed window, newly laid Grey carpet.



BEDROOM TWO (11'11 x 9'2) 3.63m x 2.79m

Encased radiator, coved ceiling, fitted shelving, newly laid grey carpet, double glazed window.



BEDROOM THREE (7'1 x 6'8) 2.16m x 2.03m plus storage

Encased radiator, built in wardrobe cupboard & storage cupboard, newly laid grey carpet, double glazed window.



REFITTED BATHROOM/WC

White suite comprising panelled bath with mixer tap and over bath shower, fitted folding shower screen, vanity unit with inset sink, chrome mixer tap, low flush wc, ceramic tiled floor, heated towel rail, extractor fan, double glazed frosted window.



OUTSIDE:- FRONT :- Paved driveway providing parking for two cars, wall mounted gas meter, outside light

REAR GARDEN: Mainly pebbled , rear wood chip area with timber shed, tree at rear

